





Time cargo units stay over free time, excluding Customs, DAFF and customer hold.

Units staying over free time	10,136		Units staying over free time	1,459		Units staying over free time	294		Units staying over free time	2117	
Units over free time due Customs/Daff or customer	67		Units over free time due Customs/Daff or customer	100		Units over free time due Customs/Daff or customer	0		Units over free time due Customs/Daff or customer	61	
Units staying over free time excluding Customs etc. as percentage of total units	15%		Units staying over free time excluding Customs etc. as percentage of total units	2%		Units staying over free time excluding Customs etc. as percentage of total units	1%		Units staying over free time excluding Customs etc. as percentage of total units	5	
Services to Linx			Services to Linx			Services to Linx			Services to Linx		
Total Cargo Units	31,559		Total Cargo Units	29,808		Total Cargo Units	N/A	No vessels handled during the reporting period	Total Cargo Units	54180	
Units staying over free time	7,736		Units staying over free time	1,229		Units staying over free time	N/A	No vessels handled during the reporting period	Units staying over free time	3296	
Units over free time due Customs/Daff or customer	0		Units over free time due Customs/Daff or customer	10		Units over free time due Customs/Daff or customer	N/A	No vessels handled during the reporting period	Units over free time due Customs/Daff or customer	98	
Units staying over free time excluding Customs etc. as percentage of total units	25%		Units staying over free time excluding Customs etc. as percentage of total units	4%		Units staying over free time excluding Customs etc. as percentage of total units	N/A	No vessels handled during the reporting period	Units staying over free time excluding Customs etc. as percentage of total units	6	
			Services to TML			Quarter 2	Services to Qube				
			Total Cargo Units	12,675		Services to Qube					
			Units staying over free time	108		Total Cargo Units	21,437				
			Units over free time due Customs/Daff or customer	0		Units staying over free time	8,991				
			Units staying over free time excluding Customs etc. as percentage of total units	1%		Units over free time due Customs/Daff or customer	14				
						Units staying over free time excluding Customs etc. as percentage of total units	42%				
Quarter 2			Quarter 2			Services to Linx			Quarter 2		
Services to Qube			Services to Qube			Total Cargo Units	N/A	No vessels handled during the reporting period	Services to Qube		
Total Cargo Units	70,793		Total Cargo Units	64,179		Units staying over free time	N/A	No vessels handled during the reporting period	Total Cargo Units	8,200	
Units staying over free time	10,685		Units staying over free time	3,395		Units over free time due Customs/Daff or customer	N/A	No vessels handled during the reporting period	Units staying over free time	1,148	
Units over free time due Customs/Daff or customer	65		Units over free time due Customs/Daff or customer	55		Units staying over free time excluding Customs etc. as percentage of total units	N/A	No vessels handled during the reporting period	Units over free time due Customs/Daff or customer	5	
Units staying over free time excluding Customs etc. as percentage of total units	15%		Units staying over free time excluding Customs etc. as percentage of total units	5%					Units staying over free time excluding Customs etc. as percentage of total units	14%	
Services to Linx			Services to Linx						Services to Linx		
Total Cargo Units	31,726		Total Cargo Units	26,125					Total Cargo Units	15,001	
Units staying over free time	9,732		Units staying over free time	1,010					Units staying over free time	1,349	
Units over free time due Customs/Daff or customer	14		Units over free time due Customs/Daff or customer	11					Units over free time due Customs/Daff or customer	2	
Units staying over free time excluding Customs etc. as percentage of total units	31%		Units staying over free time excluding Customs etc. as percentage of total units	4%					Units staying over free time excluding Customs etc. as percentage of total units	9%	
			Services to TML								
			Total Cargo Units	9,378							
			Units staying over free time	484							
			Units over free time due Customs/Daff or customer	225							
			Units staying over free time excluding Customs etc. as percentage of total units	3%							

	Number of Complaints	Explanation		Number of Complaints	Explanation		Number of Complaints	Explanation		Number of Complaints	Explanation
KPI 10 Confidentiality and ring-fencing	Quarter 1		Quarter 1		Quarter 1		Quarter 1		Quarter 1		
	Complaints for Non-Compliance with Clause 6		Complaints for Non-Compliance with Clause 6		Complaints for Non-Compliance with Clause 6		Complaints for Non-Compliance with Clause 6		Complaints for Non-Compliance with Clause 6		
	Services to Qube	Zero	Services to Qube	Zero	Services to Qube	Zero	Services to Qube	Zero	Services to Qube	Zero	
	Services to Linx	Zero	Services to Linx	Zero	Services to Linx	Zero	Services to Linx	Zero	Services to Linx	Zero	
	Breaches of Clause 6		Services to TML	Zero							
	Breaches of Clause 6		Breaches of Clause 6		Breaches of Clause 6		Breaches of Clause 6		Breaches of Clause 6		
	Services to Qube	Zero	Services to Qube	Zero	Services to Qube	Zero	Services to Qube	Zero	Services to Qube	Zero	
	Services to Linx	Zero	Services to Linx	Zero	Services to Linx	Zero	Services to Linx	Zero	Services to Linx	Zero	
	Quarter 2		Quarter 2		Quarter 2		Quarter 2		Quarter 2		
	Complaints for Non-Compliance with Clause 6		Complaints for Non-Compliance with Clause 6		Complaints for Non-Compliance with Clause 6		Complaints for Non-Compliance with Clause 6		Complaints for Non-Compliance with Clause 6		

Number of instance of breaches of Clause 6



Attachment A

## **KPI 6**

Allocation of first point of rest

Fisherman Islands

Jul 1 – Dec 31, 2025

NUMBER	DATE	STEVE-DORE	VESSEL	VOYAGE	STARTING SHIFT	BERTH #	BERTH DELAY	LAYDOWN	MACHINERY REQUEST RECEIVED	MACHINERY REQUEST FILLED	MACHINERY ISSUES	NOTES
1	30/1300	QUBE	VIKING PAGLIA	OO503	DAY	1	8HRS	A, C, D & M	YES	YES	NIL	Following departure of Canopus Leader
2	30/0200	TML	BRIO FAITH	V210	DAY	2	24HRS	B	YES	YES	NIL	Following departure of Lake Shirasagi
3	01/1300	QUBE	TIJUCA	EF508	MID	1	NIL	C	YES	YES	NIL	
4	01/1800	LINX	HOEGH TRACER	54	MID	1	24HRS	A & C	YES	YES	NIL	Following departure of Tijuca
5	02/1000	TML	HIGHLAND CHIEF	2515N	EVE	2	NIL	B	YES	YES	NIL	
6	03/0700	LINX	BBC MARMARA	39	DAY	2	16HRS	B	YES	YES	NIL	Following departure of Highland Chief
7	03/1900	QUBE	GREAT VANGUARD	2504	EVE	3	40HRS	UH	YES	YES	NIL	Following departure of AAL Genoa
8	05/1100	QUBE	GLOBAL HIGHWAY	73	EVE	1	NIL	A & C	YES	YES	NIL	
9	05/2300	QUBE	COSCO TENGFEI	92	EVE	1	8HRS	C & D	YES	YES	NIL	Following departure of Global Hwy
10	06/1700	LINX	MORNING CORNELIA	MRI147	MID	2	NIL	A & M	YES	YES	NIL	
11	07/1230	QUBE	TOSCANA	EE508	MID	1	NIL	A, C & D	YES	YES	NIL	
12	07/2200	TML	BBC OCEAN	243	DAY	2	NIL	B	YES	YES	NIL	
13	08/1300	LINX	TRANSFUTURE 7	160	MID	1	NIL	A & C	YES	YES	NIL	
14	08/2100	LINX	KARIYUSHI LEADER	84	MID	1	16HRS	A & C	YES	YES	NIL	Following departure of Trans Future 7
15	09/0800	LINX	CEPHEUS LEADER	36	MID	1	32HRS	A & C	YES	YES	NIL	Following departure of Kariyushi Leader
16	09/0800	LINX	OT IDEAAAL	63N	MID	2	8HRS	B	YES	YES	NIL	Following departure of BBC Ocean
17	09/0830	QUBE	PLOVER ARROW	2504	MID	3	NIL	OS,NS,F1,F2	YES	YES	NIL	
18	09/1100	LINX	GRAND QUEST	25GQ05	DAY	1	40HRS	C & D	YES	YES	NIL	Following departure of Cepheus Leader
19	10/1800	TML	TAKUTAI CHIEF	2515N	DAY	2	8HRS	B	YES	YES	NIL	Following departure of OT Ideaal
20	10/2300	QUBE	SWALLOW ACE	150	MID	1	16HRS	A	YES	YES	NIL	Following departure of Grand Quest
21	11/0800	LINX	HOEGH DETROIT	124	MID	1	32HRS	A & C	YES	YES	NIL	Following departure of Swallow Ace
22	11/1700	TML	JNS HARMONY	2506	DAY	3	8HRS	B	YES	YES	NIL	Following departure of Plover Arrow
23	13/1500	QUBE	AMETHYST ACE	124	MID	1	NIL	C, D & M	YES	YES	NIL	
24	14/2045	LINX	SEACON YOKOHAMA	003N	DAY	2	NIL	B	YES	YES	NIL	
25	15/1700	QUBE	WALRUS ACE	56	DAY	1	NIL	A & C	YES	YES	NIL	
26	15/2345	QUBE	AAL SHANGHAI	25006	DAY	3	NIL	NS & J	YES	YES	NIL	
27	16/1300	LINX	RHEA LEADER	134	MID	1	NIL	A	YES	YES	NIL	
28	17/1400	TML	MITO	10-517	EVE	2	96HRS	B	YES	YES	NIL	Following departure of AAL Shanghai
29	17/1700	QUBE	VIKING PASSAMA	OO507	MID	1	NIL	A & C	YES	YES	NIL	
30	17/1730	QUBE	AMBER ARROW	159	EVE	1	16HRS	A	YES	YES	NIL	Following departure of Viking Passama
31	18/2359	TML	CORAL CHIEF	2516N	DAY	2	NIL	B	YES	YES	NIL	
32	19/1030	QUBE	MORNING CHAMPION	EE509	MID	1	NIL	A & C	YES	YES	NIL	
33	19/1900	QUBE	ARABIAN SEA	OO506	EVE	1	8HRS	D	YES	YES	NIL	Following departure of Morning Champion
34	21/0100	QUBE	TOURMALINE ACE	3	DAY	1	8HRS	A & C	YES	YES	NIL	Following departure of Arabian Sea
35	21/2200	QUBE	OBERON	EF509	DAY	3	NIL	M	YES	YES	NIL	
36	22/0330	QUBE	JIUYANG BLOSSOM	1	DAY	1	NIL	A & C	YES	YES	NIL	
37	22/1030	LINX	TRANS FUTURE 5	161	DAY	1	8HRS	A, C & D	YES	YES	NIL	Following departure of Jiuyang Blossom
38	23/1200	LINX	MORNING CALYPSO	CLP126	MID	1	NIL	A, C & D	YES	YES	NIL	
39	23/1400	TML	NPDL TAHITI	2516N	EVE	2	NIL	B	YES	YES	NIL	
40	23/1900	QUBE	PAGNA	38	MID	3	NIL	M	YES	YES	NIL	
41	25/0600	TML	BBC OCEAN	244	DAY	2	NIL	B	YES	YES	NIL	
42	25/2200	TML	KAIFONG	2504	DAY	3	NIL	NS, ONS & F1	YES	YES	NIL	
43	26/1500	LINX	OT IDEAAAL	64N	MID	2	NIL	B	YES	YES	NIL	
44	27/0800	LINX	BBC MARMARA	40	EVE	2	24HRS	B	YES	YES	NIL	Following departure of OT Ideaal
45	27/1700	QUBE	ORCA ACE	57	DAY	1	NIL	A	YES	YES	NIL	
46	29/1300	QUBE	GRACIOUS ACE	108	DAY	1	NIL	A	YES	YES	NIL	
47	30/0600	TML	HIGHLAND CHIEF	2517N	EVE	2	NIL	B	YES	YES	NIL	
48	30/2300	LINX	HOEGH BOREALIS	4	DAY	1	NIL	A & C	YES	YES	NIL	

**Legend - Berth # and Laydown**

- Primary
- Secondary
- Tertiary

	SUMMARY	LINX	QUBE	TML	COMMENT
<b>TOTAL VESSELS FOR MONTH</b>		16	21	11	
<b>GREEN BERTH (Primary)</b>		16	21	11	
<b>ORANGE BERTH (Secondary)</b>		0	0	0	
<b>RED BERTH (Tertiary)</b>		0	0	0	
<b>GREEN LAYDOWN (Primary)</b>		13	14	11	
<b>ORANGE LAYDOWN (Secondary)</b>		3	7	0	

AAT FISHERMAN ISLANDS - JULY 2025

<b>RED LAYDOWN (Tertiary)</b>	<b>0</b>	<b>0</b>	<b>0</b>	
<b>NUMBER OF BERTHING DELAYS</b>	<b>9</b>	<b>7</b>	<b>4</b>	
<b>NUMBER OF MACHINERY ISSUES/REQUESTS NOT MET</b>	<b>0</b>	<b>0</b>	<b>0</b>	

AAT FISHERMAN ISLANDS - AUGUST 2025

NUMBER	DATE	STEVE-DORE	VESSEL	VOYAGE	STARTING SHIFT	BERTH #	BERTH DELAY	LAYDOWN	MACHINERY REQUEST RECEIVED	MACHINERY REQUEST FILLED	MACHINERY ISSUES	NOTES
1	26/1845	LINX	DYNAMOGRACHT	2504	MID	3	120HRS	REEFER	YES	YES	NIL	Followng departure of Kaifong
2	31/0030	QUBE	BLUE RIDGE HIGHWAY	169	DAY	1	24HRS	A & C	YES	YES	NIL	Followng departure of Hoegh Borealis
3	28/2300	TML	PACIFIC FORTITUDE	25005N	MID	3	88HRS	UH	YES	YES	NIL	Followng departure of Highland Chief
4	01/1200	LINX	HERMES LEADER	76	DAY	1	16HRS	A & C	YES	YES	NIL	Followng departure of Blue Ridge Hwy
5	01/1500	QUBE	IVORY ARROW	164	MID	1	24HRS	C, D & M	YES	YES	NIL	Followng departure of Hermes Leader
6	01/1700	TML	BRIO FAITH	V211	MID	2	8HRS	B	YES	YES	NIL	Followng departure of Pacific Fortitude
7	02/1600	LINX	SEACON YOKOHAMA	004S	EVE	3	16HRS	B	YES	YES	NIL	Followng departure of Dynamogracht
8	03/0600	LINX	HOEGH TRADER	181	MID	1	8HRS	M	YES	YES	NIL	Followng departure of Ivory Arrow
9	05/0100	QUBE	MORNING NINNI	OO510	DAY	1	NIL	A & C	YES	YES	NIL	
10	03/1200	QUBE	TITUS	EF510	DAY	1	16HRS	A & C	YES	YES	NIL	Followng departure of Seacon Yokohama
11	6-Aug	TML	SEACON YOKOHAMA	8	DAY	3	NIL	NS	YES	YES	NIL	
12	06/0900	TML	TAKUTAI CHIEF	2517N	EVE	2	NIL	B	YES	YES	NIL	
13	06/2200	QUBE	TORINO	EE510	DAY	1	NIL	A & C	YES	YES	NIL	
14	07/1000	LINX	VIKING PAGLIA	PGI008	EVE	3	NIL	F2 & M	YES	YES	NIL	
15	07/1230	LINX	TRANS FUTURE 6	160	MID	1	NIL	A & C	YES	YES	NIL	
16	08/0900	QUBE	BBC KIMBERLEY	125069	DAY	2	NIL	B	YES	YES	NIL	
17	10/0100	LINX	HOEGH SYDNEY	122	DAY	1	NIL	A & C	YES	YES	NIL	
18	09/1600	LINX	BBC GDANSK	001N	DAY	2	16HRS	B	YES	YES	NIL	Followng departure of BBC Kimberley
19	13/0930	TML	CORAL CHIEF	2518N	EVE	2	NIL	B	YES	YES	NIL	
20	13/0600	TML	BBC OCEAN	245	EVE	3	NIL	H	YES	YES	NIL	
21	13/1700	LINX	APHRODITE LEADER	61	MID	1	NIL	A	YES	YES	NIL	
22	14/0730	QUBE	MORNING CORNELIA	OO512	DAY	1	16HRS	C & D	YES	YES	NIL	Followng departure of Aphrodite Leader
23	15/0600	QUBE	GLOVIS CARAVEL	44	EVE	2	NIL	A & M	YES	YES	NIL	
24	15/0900	QUBE	AZUL ACE	35	EVE	1	24HRS	A, C & D	YES	YES	NIL	Followng departure of Morning Cornelia
25	16/1500	TML	BBC MARMARA	41	MID	2	NIL	B	YES	YES	NIL	
26	16/0500	QUBE	AAL GENOA	25005	EVE	3	NIL	OS, AWN	YES	YES	NIL	
27	16/1700	QUBE	MORNING CARA	OO513	EVE	1	16HRS	D & M	YES	YES	NIL	Followng departure of Azul Ace
28	17/0200	QUBE	GENIUS HIGHWAY	81	EVE	3	8HRS	F & M	YES	YES	NIL	Followng departure of AAL Genoa
29	17/0230	LINX	CSAV RIO NEVADO	25RN05	EVE	1	32HRS	A & C	YES	YES	NIL	Followng departure of Morning Cara, awaiting yard space
30	18/1530	LINX	TRANSFUTURE 7	161	DAY	1	NIL	B & M	YES	YES	NIL	
31	19/1400	LINX	LORD VISHNU	91	MID	1	NIL	A	YES	YES	NIL	
32	20/0300	LINX	GOLIATH LEADER	123	DAY	3	NIL	F & M	YES	YES	NIL	
33	20/1000	TML	NPDL TAHITI	2518N	EVE	2	NIL	B	YES	YES	NIL	
34	20/0800	QUBE	MARTORELL	179	EVE	1	NIL	A & C	YES	YES	NIL	
35	23/0700	QUBE	FREEDOM ACE	179	EVE	1	NIL	A	YES	YES	NIL	
36	23/0100	QUBE	PARSIFAL	EF511	DAY	3	NIL	M	YES	YES	NIL	
37	23/1600	QUBE	MORNING CAROL	EE511	DAY	1	8HRS	C	YES	YES	NIL	Followng departure of Freedom Ace
38	24/0830	QUBE	PENGUIN ARROW	2505	EVE	3	NIL	NS, F, J	YES	YES	NIL	
39	24/1400	QUBE	WISDOM ACE	95	DAY	1	NIL	A & C	YES	YES	NIL	
40	25/1500	LINX	BBC GDANSK	002N	MID	2	NIL	B	YES	YES	NIL	
41	27/0900	TML	HIGHLAND CHIEF	2519N	EVE	2	NIL	B	YES	YES	NIL	
42	27/2000	QUBE	GALA	13	DAY	3	NIL	UH	YES	YES	NIL	
43	28/1300	QUBE	EUPHRATES HIGHWAY	114	MID	1	NIL	A	YES	YES	NIL	
44	25/0800	LINX	OT IDEAAAL	65N	EVE	2	NIL	B	YES	YES	NIL	
45	30/0700	LINX	VIKING PASSAMA	PSM009	EVE	1	NIL	A & C	YES	YES	NIL	
46	30/1000	LINX	HOEGH TROTTER	48	EVE	3	NIL	E & L	YES	YES	NIL	
47	31/0100	QUBE	MORNING CHARLOTTE	OO515	DAY	1	NIL	C	YES	YES	NIL	
48	30/1500	TML	YANGTZE AMBITION	2506	DAY	3	8HRS	OS, F1 & F2	YES	YES	NIL	Followng departure of Hoegh Trotter

**Legend - Berth # and Laydown**

	Primary
	Secondary
	Tertiary

**SUMMARY**

**TOTAL VESSELS FOR MONTH**

**GREEN BERTH (Primary)**

**ORANGE BERTH (Secondary)**

**RED BERTH (Tertiary)**

**GREEN LAYDOWN (Primary)**

	LINX	QUBE	TML	COMMENT
TOTAL VESSELS FOR MONTH	17	21	10	
GREEN BERTH (Primary)	17	21	10	
ORANGE BERTH (Secondary)	0	0	0	
RED BERTH (Tertiary)	0	0	0	
GREEN LAYDOWN (Primary)	12	15	10	

AAT FISHERMAN ISLANDS - AUGUST 2025

<b>ORANGE LAYDOWN (Secondary)</b>	<b>5</b>	<b>6</b>	<b>0</b>	
<b>RED LAYDOWN (Tertiary)</b>	<b>0</b>	<b>0</b>	<b>0</b>	
<b>NUMBER OF BERTHING DELAYS</b>	<b>6</b>	<b>8</b>	<b>2</b>	
<b>NUMBER OF MACHINERY ISSUES/REQUESTS NOT MET</b>	<b>0</b>	<b>0</b>	<b>0</b>	

NUMBER	DATE	STEVE-DORE	VESSEL	VOYAGE	STARTING SHIFT	BERTH #	BERTH DELAY	LAYDOWN	MACHINERY REQUEST RECEIVED	MACHINERY REQUEST FILLED	MACHINERY ISSUES	NOTES
1	02/1815	TML	BBC OCEAN	246	MID	3	NIL	B	YES	YES	NIL	
2	03/0900	TML	TAKUTAI CHIEF	2517S/2519N	EVE	2	NIL	B	YES	YES	NIL	
3	04/0100	QP	ARC HONOR	EF512	DAY	1	NIL	A	YES	YES	NIL	
4	05/0400	QP	GAN JIANG KOU	6	EVE	1	NIL	A & C	YES	YES	NIL	
5	05/0700	QP	JOHN OXLEY2		DAY	2	NIL	UH	YES	YES	NIL	
6	06/0700	QP	NOCC ATLANTIC	EE512	EVE	1	NIL	A & C	YES	YES	NIL	
7	06/1200	TML	NORFOLK	0504	EVE	2	NIL	B	YES	YES	NIL	
8	07/0030	QP	GREBE ARROW	2505	DAY	3	NIL	OS, F & H	YES	YES	NIL	
9	07/0600	TML	BBC MARMARA	42	EVE	2	13HRS	B	YES	YES	NIL	Following departure of Norfolk
10	07/1800	QP	TRANS LEADER	18	MID	1	NIL	C & D	YES	YES	NIL	
11	08/0800	TML	YASA MIMOSA	2504	DAY	3	16HRS	NS, J & OOS	YES	YES	NIL	
12	08/0200	QP	VIKING PAGLIA	OO517	DAY	GRAIN	NIL	C & D	YES	YES	NIL	
13	08/1630	QP	HAWAIIAN HIGHWAY	83	MID	1	NIL	A & C	YES	YES	NIL	
14	08/1900	LINX	TRANS FUTURE 5	162	DAY	2	NIL	A & M	YES	YES	NIL	
15	08/2300	LINX	BBC GDANSK	003N	MID	2	88HRS	B	YES	YES	NIL	Following departure of Coral Chief
16	09/0500	TML	BRIO FAITH	V212	DAY	2	152HRS	B	YES	YES	NIL	Following departure of BBC Gdansk
17	09/1200	LINX	HYPERION LEADER	134	DAY	1	NIL	A & C	YES	YES	NIL	
18	10/0100	LINX	VICTORY RAY	8	DAY	GRAIN	NIL	A & C	YES	YES	NIL	
19	10/0200	QP	BLUE RIDGE HIGHWAY	171	DAY	1	24HRS	A, C & D	YES	YES	NIL	Following departure of Hyperion Leader
20	10/0900	TML	CORAL CHIEF	2518S/2520N	EVE	2	NIL	B	YES	YES	NIL	
21	11/0530	QP	AAL HONG KONG	25007	DAY	3	32HRS	OS, F1, F2 & WF3	YES	YES	NIL	Following departure of Yasa Mimosa
22	11/1900	LINX	GRAND COSMO	GCM038	DAY	1	NIL	A & C	YES	YES	NIL	
23	13/0600	LINX	DIONE LEADER	92	EVE	1	NIL	A, C & D	YES	YES	NIL	
24	13/1000	LINX	OT IDEAL	66N	DAY	2	NIL	B	YES	YES	NIL	
25	13/2300	QP	JUPITER SPIRIT	79	EVE	1	8HRS	C, D & M	YES	YES	NIL	Following departure of Dione Leader
26	14/0730	LINX	MERWEDEGRACHT	2508	MID	2	56HRS	UH	YES	YES	NIL	Following departure of Brio Faith
27	17/1800	LINX	GRAND QUEST	25GQ07	MID	1	NIL	A	YES	YES	NIL	
28	17/1900	QP	SIERRA NEVADA HIGH	180	DAY	3	NIL	E & M	YES	YES	NIL	
29	18/2000	TML	NPDL TAHITI	2518SS/2520N	DAY	2	NIL	B	YES	YES	NIL	
30	19/1200	LINX	THEMIS LEADER	55	EVE	1	NIL	A & C	YES	YES	NIL	
31	20/1400	LINX	GREEN WAVE	14	MID	3	NIL	OTP	YES	YES	NIL	
32	22/0800	TML	BBC OCEAN	247	EVE	2	NIL	B	YES	YES	NIL	
33	22/0730	QP	DUGONG ACE	55	EVE	3	NIL	F1, E	YES	YES	NIL	
34	22/0800	QP	GLOVIS CHAMPION	2	EVE	1	NIL	A	YES	YES	NIL	
35	22/1400	QP	TRANQUIL ACE	123	DAY	1	8HRS	C	YES	YES	NIL	Following departure of Glovis Champion
36	22/1830	LINX	TRANS FUTURE 6	161	EVE	3	NIL	E & M	YES	YES	NIL	
37	23/0100	LINX	TARIFA	TFA150	EVE	1	16HRS	A & C	YES	YES	NIL	Following departure of Tranquil Ace
38	23/0900	QP	GARNET ACE	124	EVE	1	48HRS	A, C & D	YES	YES	NIL	Following departure of Tarifa
39	23/1400	LINX	POSITIVE LEADER	134	DAY	1	32HRS	A & D	YES	YES	NIL	Following departure of Garnet Ace
40	23/1830	QP	AAL SHANGHAI	25008/25009	DAY	3	NIL	NS	YES	YES	NIL	
41	24/0900	TML	HIGHLAND CHIEF	2519S/2521N	EVE	2	NIL	B, NTP	YES	YES	NIL	
42	25/0200	QP	AMERICAN HIGHWAY	225	EVE	1	48HRS	A & C	YES	YES	NIL	Following departure of Positive Leader
43	26/1600	QP	BOHEME	EE513	EVE	2	16HRS	M	YES	YES	NIL	Following departure of AAL Shanghai
44	27/2000	QP	ANIARA	EF513	DAY	3	NIL	E	YES	YES	NIL	
45	28/0400	QP	TONSBERG	EF514	DAY	3	24HRS	E	YES	YES	NIL	Following departure of Aniara
46	28/0600	LINX	BBC GDANSK	004N	EVE	2	NIL	B, NTP	YES	YES	NIL	
47	29/1200	LINX	HOEGH OSAKA	124	EVE	1	NIL	A & C	YES	YES	NIL	
48	30/0800	LINX	BBC MARMARA	43	EVE	3	NIL	B	YES	YES	NIL	

**Legend - Berth # and Laydown**

	Primary
	Secondary
	Tertiary

SUMMARY	LINX	QUBE	TML	COMMENT
<b>TOTAL VESSELS FOR MONTH</b>	<b>17</b>	<b>21</b>	<b>10</b>	
<b>GREEN BERTH (Primary)</b>	<b>16</b>	<b>20</b>	<b>10</b>	
<b>ORANGE BERTH (Secondary)</b>	<b>1</b>	<b>1</b>	<b>0</b>	
<b>RED BERTH (Tertiary)</b>	<b>0</b>	<b>0</b>	<b>0</b>	
<b>GREEN LAYDOWN (Primary)</b>	<b>13</b>	<b>14</b>	<b>10</b>	
<b>ORANGE LAYDOWN (Secondary)</b>	<b>4</b>	<b>7</b>	<b>0</b>	
<b>RED LAYDOWN (Tertiary)</b>	<b>0</b>	<b>0</b>	<b>0</b>	
<b>NUMBER OF BERTHING DELAYS</b>	<b>4</b>	<b>8</b>	<b>3</b>	

<b>NUMBER OF MACHINERY ISSUES/REQUESTS NOT MET</b>	<b>0</b>	<b>0</b>	<b>0</b>	
--	----------	----------	----------	--

NUMBER	DATE	STEVE-DORE	VESSEL	VOYAGE	STARTING SHIFT	BERTH #	BERTH DELAY	LAYDOWN	MACHINERY REQUEST RECEIVED	MACHINERY REQUEST FILLED	MACHINERY ISSUES	NOTES
1	01/0900	TML	TAKUTAI CHIEF	2521N	EVE	2	NIL	B	YES	YES	NIL	
2	01/1300	QUBE	WISTERIA ACE	142	MID	1	NIL	A	YES	YES	NIL	
3	02/1200	LINX	OT IDEAL	067N	DAY	2	8HRS	B	YES	YES	NIL	Following departure of Takutai Chief
4	02/1500	LINX	HOEGH TRAVELLER	52	MID	3	NIL	E & M	YES	YES	NIL	
5	03/0100	QUBE	MORNING COURIER	00521	DAY	1	NIL	A & C	YES	YES	NIL	
6	03/0800	QUBE	AAL DAMPIER	25006	MID	3	8HRS	S, AWNING, NS, F1, B & REEF	YES	YES	NIL	Following departure of Hoegh Traveller
7	05/0001	QUBE	ONYX ARROW	122	DAY	1	NIL	A & C	YES	YES	NIL	
8	07/0200	QUBE	PEGASUS ACE	326	DAY	1	NIL	A, C & D	YES	YES	NIL	
9	08/0100	LINX	TRANS FUTURE 7	162	DAY	1	NIL	A & C	YES	YES	NIL	
10	08/0600	QUBE	NORTHERN HIGHWAY	159	EVE	3	NIL	E	YES	YES	NIL	
11	08/1800	QUBE	BBC OREGON	6083	EVE	2	NIL	UH	YES	YES	NIL	
12	09/0153	QUBE	KITE ARROW	2506	DAY	3	NIL	NS, OS, AWNING, J, F1	YES	YES	NIL	
13	09/0345	QUBE	OLIVIA	1021	DAY	3	64HRS	F1 & OS	YES	YES	NIL	Following departure of Kite Arrow
14	09/1600	QUBE	GAN JIANG KOU	7	MID	1	NIL	A & C	YES	YES	NIL	
15	10/1300	QUBE	NABUCCO	EE514	MID	1	NIL	A & C	YES	YES	NIL	
16	10/1600	TML	CORAL CHIEF	2522N	MID	2	NIL	B	YES	YES	NIL	
17	10/1800	TML	YANGTZE HAPPINESS	2506	EVE	2	64HRS	F1, OTP & OS	YES	YES	NIL	Following departure of BBC Ocean
18	11/1200	QUBE	FREEDOM ACE	180	DAY	1	NIL	C	YES	YES	NIL	
19	11/1900	QUBE	VIKING EMERALD	029S	EVE	1	16HRS	A & C	YES	YES	NIL	Following departure of Freedom Ace
20	12/0300	TML	BBC OCEAN	248	EVE	2	NIL	B	YES	YES	NIL	
21	13/1530	QUBE	VIKING OCEAN	23	DAY	1	8HRS	A, C & D	YES	YES	NIL	Following departure of Viking Emerald
22	14/1600	QUBE	ARABIAN SEA	00523	DAY	1	NIL	A & C	YES	YES	NIL	
23	14/2200	LINX	PHOENIX LEADER	61	DAY	3	NIL	E	YES	YES	NIL	
24	15/0900	LINX	KARIYUSHI LEADER	88	DAY	1	16HRS	A, C & D	YES	YES	NIL	Following departure of Arabian Sea
25	15/1000	TML	NPDL TAHITI	2522N	EVE	2	NIL	B	YES	YES	NIL	
26	15/1500	LINX	BBC GDANSK	005N	MID	2	24HRS	B	YES	YES	NIL	Following departure of NPDL Tahiti
27	16/0200	TML	BRIO FAITH	V213	DAY	3	NIL	H	YES	YES	NIL	
28	16/0500	QUBE	TOSCA	00521	MID	1	8HRS	A, C & D	YES	YES	NIL	Following departure of Kariyushi Leader
29	16/0500	TML	TS DELTA	2501	DAY	3	16HRS	OS, ONS, J, F1 & AWNING	YES	YES	NIL	Following departure of Brio Faith
30	16/0800	QUBE	MORNING CAROLINE	00525	DAY	1	NIL	A, C & M	YES	YES	NIL	
31	17/0800	QUBE	TRANS LEADER	19	EVE	1	NIL	A & C	YES	YES	NIL	
32	18/0100	LINX	GRACEFUL LEADER	131	DAY	1	NIL	A, C & D	YES	YES	NIL	
33	19/0600	TML	BBC MARMARA	44	DAY	2	NIL	B	YES	YES	NIL	
34	19/0800	QUBE	BLUE RIDGE HIGHWAY	172	EVE	3	NIL	E	YES	YES	NIL	
35	20/1900	LINX	OT IDEAL	068N	EVE	2	NIL	B	YES	YES	NIL	
36	21/0430	LINX	NEW CENTURY 1	199	DAY	1	NIL	A	YES	YES	NIL	
37	22/0100	QUBE	STELLINA	3	MID	3	NIL	F1, F2, OOS & J	YES	YES	NIL	
38	22/2300	LINX	HOEGH AUSTRALIS	4	DAY	1	8HRS	C	YES	YES	NIL	
39	23/0630	QUBE	TONGALA	EF515	DAY	3	NIL	E	YES	YES	NIL	
40	24/0900	QUBE	TITUS	2504	EVE	2	NIL	UH	YES	YES	NIL	
41	24/1000	QUBE	CLOVER ACE	120	EVE	1	NIL	A & C	YES	YES	NIL	
42	25/0200	TML	NORFOLK	005E	DAY	3	NIL	B	YES	YES	NIL	
43	25/2000	LINX	VIKING PASSAMA	PSM011	DAY	1	NIL	A & C	YES	YES	NIL	
44	25/2300	TML	INSPIRATION LAKE	2504	DAY	3	NIL	NS, OS, F1 & J	YES	YES	NIL	
45	28/1530	TML	TAKUTAI CHIEF	2523N	MID	2	NIL	B	YES	YES	NIL	
46	29/0600	QUBE	VICTORIOUS ACE	83	EVE	1	NIL	A & C	YES	YES	NIL	
47	30/0700	TML	HIGHLAND CHIEF	2523N	EVE	2	NIL	B	YES	YES	NIL	
48	30/1000	QUBE	SALOME	EF516	EVE	3	NIL	E	YES	YES	NIL	

**Legend - Berth # and Laydown**

- Primary
- Secondary
- Tertiary

**SUMMARY**

	LINX	QUBE	TML	COMMENT
<b>TOTAL VESSELS FOR MONTH</b>	11	25	12	
<b>GREEN BERTH (Primary)</b>	11	25	12	
<b>ORANGE BERTH (Secondary)</b>	0	0	0	
<b>RED BERTH (Tertiary)</b>	0	0	0	
<b>GREEN LAYDOWN (Primary)</b>	8	21	12	
<b>ORANGE LAYDOWN (Secondary)</b>	3	4	0	

<b>RED LAYDOWN (Tertiary)</b>	<b>0</b>	<b>0</b>	<b>0</b>	
<b>NUMBER OF BERTHING DELAYS</b>	<b>4</b>	<b>5</b>	<b>2</b>	
<b>NUMBER OF MACHINERY ISSUES/REQUESTS NOT MET</b>	<b>0</b>	<b>0</b>	<b>0</b>	

AAT FISHERMAN ISLANDS - NOVEMBER 2025

NUMBER	DATE	STEVE-DORE	VESSEL	VOYAGE	STARTING SHIFT	BERTH #	BERTH DELAY	LAYDOWN	MACHINERY REQUEST RECEIVED	MACHINERY REQUEST FILLED	MACHINERY ISSUES	NOTES
1	31/0300	LINX	HOEGH MOONLIGHT	2	DAY	3	24HRS	E	YES	YES	NIL	Awaiting departure of Salome
2	31/0600	TML	BBC OCEAN	249	MID	2	8HRS	B	YES	YES	NIL	Awaiting departure of Highland Chief
3	31/0600	LINX	MORNING MENAD	MMN216	DAY	1	8HRS	A	YES	YES	NIL	Awaiting departure of Highland Chief
4	31/1000	LINX	POSITIVE LEADER	135	DAY	1	40HRS	A & C	YES	YES	NIL	Awaiting departure of Morning Menad
5	01/0300	QUBE	MORNING CATHERINE	EE515	DAY	3	16HRS	E	YES	YES	NIL	Awaiting departure of Hoegh Moonlight
6	01/0900	LINX	BBC GDANSK	006N	DAY	2	16HRS	B	YES	YES	NIL	Awaiting departure of BBC Ocean
7	02/1600	LINX	HYPERION LEADER	135	DAY	1	8HRS	A, C & D	YES	YES	NIL	Awaiting departure of Positive Leader
8	02/2100	QUBE	AMERICAN HIGHWAY	226	DAY	3	NIL	E, L, M, W, NS & WF3	YES	YES	NIL	
9	03/0500	LINX	TRANS FUTURE 5	163	DAY	1	24HRS	A & C	YES	YES	NIL	Awaiting departure of Hyperion Leader
10	03/1000	QUBE	SIRIUS HIGHWAY	75	DAY	3	40HRS	E & W	YES	YES	NIL	Awaiting departure of American Hwy & Closed Port Day (MUA Picnic Day)
11	05/0900	TML	CORAL CHIEF	2524N	EVE	2	NIL	B	YES	YES	NIL	
12	06/1000	LINX	CSAV RIO NEVADO	25RN07	EVE	1	NIL	A, C & D	YES	YES	NIL	
13	08/1000	LINX	LAKE TRAVIS	LTR004	EVE	1	NIL	A, C & D	YES	YES	NIL	
14	08/1000	TML	BBC MARMARA	45	EVE	2	NIL	B	YES	YES	NIL	
15	08/1400	LINX	HOEGH TRAPPER	52	MID	3	NIL	E & W	YES	YES	NIL	
16	09/0700	LINX	O7 ALSACE	2505	MID	3	NIL	B, ONS & AWN	YES	YES	NIL	
17	10/0700	LINX	LORD VISHNU	94	EVE	1	NIL	A & C	YES	YES	NIL	
18	11-Nov	LINX	OT IDEAAL	69N	MID	2	NIL	B	YES	YES	NIL	
19	12/1700	TML	NPDL TAHITI	2524N	EVE	2	NIL	B	YES	YES	NIL	
20	13/0001	QUBE	TARIFA	OO527	DAY	1	NIL	A & C	YES	YES	NIL	
21	13/0900	QUBE	STAR KIRKENES	2505	EVE	3	NIL	NS, OS, AWN, W, J, H, G & OOS	YES	YES	NIL	
22	14/0730	QUBE	WISTERIA ACE	143	EVE	1	NIL	A & C	YES	YES	NIL	
23	14/1500	QUBE	AFRICAN GRIFFON	S0027	DAY	3	96HRS	UH	YES	YES	NIL	Awaiting departure of Star Kirkenes
24	15/0001	LINX	ALTAIR LEADER	100	DAY	1	NIL	D	YES	YES	NIL	
25	15/1530	TML	TS HONOUR	2501	MID	2	NIL	OS & AWN	YES	YES	NIL	
26	15/2300	QUBE	SAIC ANJI SINCERITY	1	DAY	1	NIL	D & M	YES	YES	NIL	
27	16/1400	QUBE	HAN JIANG KOU	5	DAY	1	NIL	A & C	YES	YES	NIL	
28	16/1600	QUBE	VIKING PAGLIA	OO529	DAY	GRAIN	8HRS	C & M	YES	YES	NIL	Awaiting departure of SAIC AnJi Sincerity and availability of Grain Berth
29	17/0100	QUBE	ONYX ARROW	123	MID	1	NIL	A, C & D	YES	YES	NIL	
30	18/0100	TML	BBC OCEAN	250	DAY	2	NIL	B	YES	YES	NIL	
31	18/1100	LINX	BBC GDANSK	007N	EVE	2	24HRS	B	YES	YES	NIL	Awaiting departure of BBC Ocean
32	21/1100	LINX	GRAND QUEST	25GQ09	EVE	2	NIL	A	YES	YES	NIL	
33	22/1300	QUBE	TORTUGAS	EE516	MID	2	NIL	A	YES	YES	NIL	
34	23/0100	LINX	TRANS FUTURE 7	163	DAY	1	NIL	C	YES	YES	NIL	
35	23/0400	LINX	DIONE LEADER	96	DAY	3	NIL	E	YES	YES	NIL	
36	24/1045	LINX	VIKING PASSAMA	OK532	EVE	1	NIL	A, C & D	YES	YES	NIL	
37	24/1700	LINX	OT IDEAAL	70N	EVE	3	NIL	H	YES	YES	NIL	
38	25/0430	TML	HIGHLAND CHIEF	2525N	EVE	2	NIL	B	YES	YES	NIL	
39	25/1900	QUBE	TYSLA	EF517	EVE	1	NIL	A	YES	YES	NIL	
40	26/0830	TML	BRIO FAITH	214	DAY	2	32HRS	B	YES	YES	NIL	Awaiting departure of Takutai Chief
41	26/1100	TML	TAKUTAI CHIEF	2525N	EVE	2	NIL	B	YES	YES	NIL	
42	26/1200	QUBE	GLOVIS CENTURY	3	EVE	1	16HRS	A & C	YES	YES	NIL	Awaiting departure of BBC Ocean
43	27/0500	QUBE	BBC VERMONT	1015086	DAY	3	NIL	UH	YES	YES	NIL	
44	27/1030	QUBE	BLUE RIDGE HIGHWAY	173	DAY	1	16HRS	A & D	YES	YES	NIL	Awaiting departure of Glovis Century
45	27/1500	TML	JNS PEACE	2506	EVE	3	16HRS	NS, OS, F2, WF3	YES	YES	NIL	Awaiting departure of BBC Vermont
46	27/2200	QUBE	MORNING NINNI	OO531	EVE	1	32HRS	A, C & D	YES	YES	NIL	Awaiting departure of Blue Ridge Hwy
47	28/0600	QUBE	TIRRANNA	EF518	DAY	1	16HRS	M	YES	YES	NIL	Awaiting departure of Morning Ninni
48	29/0700	QUBE	FANOULA	1	DAY	3	16HRS	UH	YES	YES	NIL	Awaiting departure of JNS Peace
49	29/0800	TML	BBM MARMARA	46	EVE	2	NIL	B	YES	YES	NIL	

Legend - Berth # and Laydown

	Primary
	Secondary
	Tertiary

SUMMARY

	LINX	QUBE	TML	COMMENT
TOTAL VESSELS FOR MONTH	19	19	11	
GREEN BERTH (Primary)	19	19	11	
ORANGE BERTH (Secondary)	0	0	0	
RED BERTH (Tertiary)	0	0	0	

AAT FISHERMAN ISLANDS - NOVEMBER 2025

<b>GREEN LAYDOWN (Primary)</b>	<b>14</b>	<b>12</b>	<b>11</b>	
<b>ORANGE LAYDOWN (Secondary)</b>	<b>5</b>	<b>6</b>	<b>0</b>	
<b>RED LAYDOWN (Tertiary)</b>	<b>0</b>	<b>1</b>	<b>0</b>	
<b>NUMBER OF BERTHING DELAYS</b>	<b>7</b>	<b>9</b>	<b>3</b>	
<b>NUMBER OF MACHINERY ISSUES/REQUESTS NOT MET</b>	<b>0</b>	<b>0</b>	<b>0</b>	

NUMBER	DATE	STEVE-DORE	VESSEL	VOYAGE	STARTING SHIFT	BERTH #	BERTH DELAY	LAYDOWN	MACHINERY REQUEST RECEIVED	MACHINERY REQUEST FILLED	MACHINERY ISSUES	NOTES
1	30/0300	QUBE	AAL HONG KONG	25009	EVE	3	24HRS	NS, H & F2	YES	YES	NIL	Following departure of Fanoula
2	30/0400	QUBE	TRANS LEADER	20	DAY	1	24HRS	A	YES	YES	NIL	Following departure of Tirranna
3	30/1100	LINX	TAIHUA STAR	132	DAY	2	NIL	K	YES	YES	NIL	
4	30/1500	QUBE	WISDOM ACE	98	DAY	1	32HRS	A & C	YES	YES	NIL	Following departure of Trans Leader
5	01/0945	QUBE	EUROPEAN HIGHWAY	275	DAY	1	40HRS	A & D	YES	YES	NIL	
6	01/1630	QUBE	FREEDOM ACE	181	DAY	1	56HRS	A, C, D & M	YES	YES	NIL	Following departure of European Hwy
7	02/1830	LINX	NEW CENTURY 1	200	DAY	3	NIL	E	YES	YES	NIL	SPI
8	03/0600	LINX	BBC GDANSK	008N	DAY	2	40HRS	B	YES	YES	NIL	Following departure of Coral Chief
9	03/0900	TML	CORAL CHIEF	2526N	EVE	2	NIL	B	YES	YES	NIL	
10	03/1900	LINX	FLORIJNGRACHT	2508	DAY	3	NIL	UH	YES	YES	NIL	
11	04/0400	TML	BBC OCEAN	251	MID	3	16HRS	FNS, H & G	YES	YES	NIL	Following departure of Florijngracht
12	06/0400	LINX	CANOPIUS LEADER	223	EVE	1	NIL	A, C & D	YES	YES	NIL	
13	06/1600	QUBE	AAL SHANGHAI	25010	MID	3	NIL	NS, ONS, F, H & REEFER	YES	YES	NIL	
14	07/0730	QUBE	MANDARIN ARROW	2506	EVE	3	64HRS	NS, OS & F1	YES	YES	NIL	Following departure of AAL Shanghai
15	07/0800	LINX	HOEGH DETROIT	126	EVE	1	NIL	D	YES	YES	NIL	
16	8-Dec	TML	NORFOLK	0506E	DAY	2	NIL	B	YES	YES	NIL	
17	08/0700	QUBE	ORCHID ACE	152	EVE	1	NIL	A, C, D & M	YES	YES	NIL	
18	09/0930	LINX	OT IDEAL	071N	MID	2	56HRS	B	YES	YES	NIL	Following departure of NPD L Tahiti
19	09/1300	LINX	CSAV RIO NEVADO	25RN08	MID	1	NIL	A & C	YES	YES	NIL	
20	10/0900	LINX	METIS LEADER	128	MID	1	NIL	A	YES	YES	NIL	
21	10/1000	TML	NPD L TAHITI	2526N	EVE	2	NIL	B	YES	YES	NIL	
22	11/1200	QUBE	MORNING CROWN	00533	MID	1	NIL	A & C	YES	YES	NIL	
23	12/0200	LINX	HOEGH BOREALIS	6	EVE	3	NIL	E, W & WF3	YES	YES	NIL	
24	12/1800	LINX	DEMETER LEADER	42	DAY	1	NIL	A & C	YES	YES	NIL	
25	13/0001	QUBE	WESTERN HIGHWAY	177	DAY	3	NIL	E, OTP & F2	YES	YES	NIL	
26	13/1000	QUBE	MORNING CELINE	00534	MID	1	NIL	A, C & D	YES	YES	NIL	
27	14/0430	LINX	RHEA LEADER	137	EVE	1	NIL	C, D & M	YES	YES	NIL	
28	14/1100	QUBE	AMERICAN HIGHWAY	227	EVE	1	16HRS	A, C & WF1	YES	YES	NIL	Following departure of Rhea Leader
29	14/2300	QUBE	ALANIS	1	EVE	2	NIL	UH	YES	YES	NIL	
30	15/1000	LINX	TRANS FUTURE 5	164	EVE	3	NIL	F2 & L	YES	YES	NIL	
31	17/0200	TML	BBC MARMARA	47	DAY	3	NIL	B	YES	YES	NIL	
32	17/0900	TML	HIGHLAND CHIEF	2601N	EVE	2	NIL	B	YES	YES	NIL	
33	18/0500	QUBE	COSCO TENGFEI	95	DAY	1	NIL	A	YES	YES	NIL	
34	18/1700	LINX	MORNING MARGARETA	OK535	DAY	1	NIL	A & C	YES	YES	NIL	
35	20/1400	QUBE	SWALLOW ACE	153	EVE	1	NIL	C & D	YES	YES	NIL	
36	21/0100	LINX	BBC GDANSK	009N	DAY	2	NIL	B	YES	YES	NIL	
37	21/1400	QUBE	HORIZON RAY	2	MID	1	NIL	A, C, D & M	YES	YES	NIL	
38	22/0130	QUBE	EUPHONY ACE	160	EVE	1	8HRS	A & C	YES	YES	NIL	Following departure of Horizon Ray
39	22/0200	TML	BBC OCEAN	3	DAY	3	NIL	H & G	YES	YES	NIL	
40	22/1230	QUBE	TALIA	EE517	DAY	1	8HRS	A & C	YES	YES	NIL	Following departure of Euphony Ace
41	23/1100	QUBE	EASTERN HIGHWAY	167	EVE	3	NIL	E & L	YES	YES	NIL	
42	23/1900	TML	TAKUTAI CHIEF	2527N	MID	2	NIL	B	YES	YES	NIL	
43	24/0200	QUBE	TALISMAN	EF519	DAY	3	NIL	L & M	YES	YES	NIL	
44	25/0100	QUBE	TOLEDO	EE518	DAY	3	40HRS	L & M	YES	YES	NIL	Following departure of Talisman
45	27-Dec	QUBE	GRAND VEGA	18	DAY	1	NIL	A & C	YES	YES	NIL	
46	27/1400	QUBE	VIKING PASSAMA	00539	DAY	1	NIL	A & C	YES	YES	NIL	
47	29/0600	TML	YANGTZE HAPPINESS	2508	EVE	3	NIL	NS, J, ONS	YES	YES	NIL	
48	29-Dec	LINX	OT IDEAL	72N	EVE	2	NIL	B	YES	YES	NIL	
49	30/0900	LINX	TRANS FUTURE 6	163	EVE	1	NIL	A	YES	YES	NIL	
50	30/2300	QUBE	DUGONG ACE	57	DAY	GB	NIL	A & C	YES	YES	NIL	

**Legend - Berth # and Laydown**

	Primary
	Secondary
	Tertiary

SUMMARY	LINX	QUBE	TML	COMMENT
<b>TOTAL VESSELS FOR MONTH</b>	17	24	9	
<b>GREEN BERTH (Primary)</b>	17	24	9	
<b>ORANGE BERTH (Secondary)</b>	0	0	0	
<b>RED BERTH (Tertiary)</b>	0	0	0	
<b>GREEN LAYDOWN (Primary)</b>	13	15	9	
<b>ORANGE LAYDOWN (Secondary)</b>	4	9	0	

<b>RED LAYDOWN (Tertiary)</b>	<b>0</b>	<b>0</b>	<b>0</b>	
<b>NUMBER OF BERTHING DELAYS</b>	<b>2</b>	<b>10</b>	<b>1</b>	
<b>NUMBER OF MACHINERY ISSUES/REQUESTS NOT MET</b>	<b>0</b>	<b>0</b>	<b>0</b>	

Attachment A


## **KPI 6**

Allocation of first point of rest

Port Kembla

Jul 1 – Dec 31, 2025

DATE	STEVE-DORE	VESSEL	VOYAGE	STARTING SHIFT	BERTH #	BERTH DELAY	LAYDOWN	MACHINERY REQUEST RECEIVED	MACHINERY REQUEST FILLED	MACHINERY ISSUES	NOTES
1/07/2025	QUBE	STOLT HAGI	N/A	EVENING	105	N	LAY UP ONLY	N/A	N/A	N/A	
4/07/2025	QUBE	VIKING PAGLIA	00503	EVENING	105	N	F BLOCK, H BLOCK AND N BLOCK	Y	Y	N	BERTH 105 UTILISED AS BERTH 106 AND 107 OCCUPIED.
4/07/2025	QUBE	BBC MONT BLANC	9100	EVENING	106	N	L BLOCK AND M BLOCK	Y	Y	N	
4/07/2025	QUBE	TUIUCA	EF508	EVENING	107	N	EBLK, GBLK, Q BLOCK AND E SHED	Y	Y	N	
5/07/2025	QUBE	TOSCANA	EE508	DAY	107	N	107COM, GBLK, 107STG, C BLOCK, Q BLOCK, E SHED AND LINKSPAN	Y	Y	N	
5/07/2025	LINX	CANOPUS LEADER	215	EVENING	105	N	D BLOCK, F BLOCK, R BLOCK AND N BLOCK	Y	Y	N	H BLOCK NOT UTILISED AS FULL
6/07/2025	QUBE	SOUTHGATE	60	EVENING	105	Y	DIRECT TO TRUCK	Y	Y	N	DELAYED DUE TO ONLY BEING ABLE TO BERTH AT 105 AND BERTH WAS OCCUPIED
7/07/2025	LINX	CSAV RIO NEVADO	25RN48	DAY	106	N	D BLOCK	Y	Y	N	H BLOCK NOT UTILISED AS FULL
7/07/2025	LINX	GRAND QUEST	25GQ05	DAY	107	N	C BLOCK	Y	Y	N	
8/07/2025	QUBE	ADRIA ACE	148	NIGHT	106	N	B BLOCK, D BLOCK, H BLOCK, M BLOCK AND PSHED	Y	Y	N	
8/07/2025	QUBE	GLOBAL HIGHWAY	073	DAY	107	N	107CON, 107STRG, EBLK, GBLK, A BLOCK, C BLOCK, D BLOCK AND ESHED	Y	Y	N	
8/07/2025	QUBE	SWALLOW ACE	150	EVENING	106	N	F BLOCK	Y	Y	N	H BLOCK NOT UTILISED AS FULL
9/07/2025	QUBE	COSCO TENGFEI	092	NIGHT	105	N	M BLOCK AND N BLOCK	Y	Y	N	BERTH 105 UTILISED AS BERTH 106 AND 107 OCCUPIED.
9/07/2025	LINX	HOEGH DETROIT	124	NIGHT	107	Y	LINKSPAN, 107STG, A BLOCK, B BLOCK, C BLOCK, D BLOCK, Q BLOCK, O BLOCK AND ESHED	Y	Y	N	B BLOCK AND D BLOCK UTILISED AS NOT ENOUGH SPACE IN C BLOCK, BERTHING DELAYED DUE TO BERTH CONGESTION
9/07/2025	LINX	MORNING CORNELIA	MRI147	EVENING	106	Y	B BLOCK, D BLOCK, H BLOCK AND M BLOCK	Y	Y	N	BERTHING DELAYED DUE TO BERTH CONGESTION
11/07/2025	QUBE	AMETHYST ACE	124	NIGHT	106	Y	D BLOCK, F BLOCK, H BLOCK, R BLOCK AND L BLOCK	Y	Y	N	BERTHING DELAYED DUE TO BERTH CONGESTION
11/07/2025	QUBE	TRANS FUTURE 7	160	NIGHT	107	N	107CON, C BLOCK, Q BLOCK, O BLOCK AND ESHED	Y	Y	N	
12/07/2025	LINX	KARIYUSHI LEADER	084	NIGHT	107	N	A BLOCK, B BLOCK, C BLOCK, Q BLOCK AND O BLOCK	Y	Y	N	B BLOCK UTILISED AS NOT ENOUGH SPACE IN C BLOCK
12/07/2025	LINX	CEPHEUS LEADER	036	EVENING	106	N	B BLOCK, H BLOCK, L BLOCK AND M BLOCK	Y	Y	N	
13/07/2025	QUBE	BBG GUIGANG	0727	DAY	103	Y	DIRECT TO TRUCK	Y	Y	N	BERTHING DELAYED DUE TO BERTH CONGESTION
16/07/2025	LINX	NEPTUNE BARCELONA	2	DAY	106	N	F BLOCK, H BLOCK, GSHED, K BLOCK, L BLOCK AND M BLOCK	Y	Y	N	
16/07/2025	QUBE	EASTERN HIGHWAY	163	DAY	107	N	C BLOCK AND Q BLOCK	Y	Y	N	
17/07/2025	QUBE	MORNING CHAMPION	EE509	EVENING	107	N	EBLK, GBLK, 107CON, C BLOCK, Q BLOCK AND GSHED	Y	Y	N	
18/07/2025	QUBE	WALRUS ACE	056	NIGHT	106	N	F BLOCK, H BLOCK AND M BLOCK	Y	Y	N	
18/07/2025	QUBE	MERWEDEGRACHT	2506	EVENING	105	N	N BLOCK	Y	Y	N	
18/07/2025	QUBE	TOURMALINE ACE	0003	EVENING	107	N	107STRG, A BLOCK, C BLOCK, Q BLOCK AND O BLOCK	Y	Y	N	
19/07/2025	QUBE	JIUYANG BLOSSOM	001	EVENING	107	N	107CON, A BLOCK AND D BLOCK	Y	Y	N	D BLOCK UTILISED AS NOT ENOUGH SPACE IN C BLOCK
20/07/2025	QUBE	VIKING PASSAMA	00507	NIGHT	106	N	D BLOCK, F BLOCK, H BLOCK, R BLOCK, M BLOCK AND PSHED	Y	Y	N	
20/07/2025	QUBE	AMBER ARROW	159	EVENING	107	N	EBLK, GBLK, 107CON, A BLOCK, B BLOCK, C BLOCK, Q BLOCK AND ESHED	Y	Y	N	B BLOCK UTILISED AS NOT ENOUGH SPACE IN C BLOCK
22/07/2025	QUBE	PORGY	00505	DAY	106	N	L BLOCK	Y	Y	N	
22/07/2025	QUBE	ARABIAN SEA	00506	EVENING	106	N	F BLOCK, H BLOCK, M BLOCK AND PSHED	Y	Y	N	
24/07/2025	QUBE	OBERON	EF509	DAY	107	N	EBLK, 107CON, C BLOCK, Q BLOCK AND GSHED	Y	Y	N	
25/07/2025	QUBE	TRANS FUTURE 5	161	NIGHT	106	N	D BLOCK, F BLOCK, H BLOCK, M BLOCK AND PSHED	Y	Y	N	
25/07/2025	QUBE	ORCA ACE	057	DAY	107	N	EBLK, GBLK, C BLOCK, Q BLOCK AND GSHED	Y	Y	N	
25/07/2025	QUBE	ISE BAY	01	EVENING	103	N	DIRECT TO TRUCK	Y	Y	N	
26/07/2025	QUBE	PAGNA	038	DAY	106	N	F BLOCK	Y	Y	N	H BLOCK NOT UTILISED AS FULL
26/07/2025	LINX	MORNING CALYPSO	CLP126	DAY	107	N	A BLOCK, C BLOCK, Q BLOCK AND O BLOCK	Y	Y	N	
27/07/2025	QUBE	GRACIOUS ACE	108	DAY	107	N	107COM, A BLOCK, B BLOCK, Q BLOCK AND ESHED	Y	Y	N	
28/07/2025	LINX	HOEGH BOREALIS	4	DAY	106	N	EBLK, GBLK, 107STG, D BLOCK, O BLOCK, ESHED AND LINKSPAN	Y	Y	N	D BLOCK UTILISED AS NOT ENOUGH SPACE IN C BLOCK

Legend - Berth # and Laydown  

 Primary  
 Secondary  
 Tertiary

TOTAL VESSELS FOR MONTH	QUBE	LINX
GREEN BERTH	27	9
ORANGE BERTH	2	1
RED BERTH	0	0
GREEN LAYDOWN	26	5
ORANGE LAYDOWN	3	5
RED LAYDOWN	0	0

NUMBER OF BERTHING DELAYS	3	2
NUMBER OF MACHINERY ISSUES/REQUESTS NOT MET	0	0

SEE ATTACHED SHEETS SHOWING BERTH AND CONGESTION DELAYS

VESSEL ETA'S										
NAME	ETA DATE	ETA TIME	POB	ETD	BERTH	BSD - TREATMENT	PREVIOUS PORT	VOLUME	WINDOW	
weather e	JUTHA MALEE	29/06/2025	9:00	29/06/2025 19:43	3/07/2025 12:58	105	LOA 117 / BTB 97	GLD		DEFENCE EQUIPMENT
	BBG GUIGANG	30/06/2025	17:48	13/07/2025 6:52	25/07/2025 18:32	103	LOA 229 / BTB 197	18/07-24/07/25 (10)		71,500T WHEAT
weather e	STOLT HAGI	1/07/2025	19:00	1/07/2025 19:53	3/07/2025 12:00	105	LOA 127 / BTB 103			VESSEL LAY-UP ONLY
	TIJUCA	4/07/2025	7:00	4/07/2025 11:07	5/07/2025 1:00	107	LOA 237 / BTB 49		180	
	BBC MONT BLANC	4/07/2025	14:30	4/07/2025 15:25	5/07/2025 18:54	106	LOA 126 / BTB 113			BLUESCOPE PROJECT
	TOSCANA	4/07/2025	16:00	5/07/2025 5:53	6/07/2025 3:27	107	LOA 200 / BTB 41		794	
	VIKING PAGLIA	4/07/2025	17:00	4/07/2025 18:22	5/07/2025 6:07	105	LOA 183 / BTB 32		1017	
	SOUTHGATE	4/07/2025	21:00	6/07/2025 10:54	8/07/2025 20:40	105	LOA 180 / BTB 154			10,250T KOCH
	CANOPUS LEADER	5/07/2025	4:00	5/07/2025 10:44	6/07/2025 9:00	105	LOA 180 / BTB 18	BNE	875	
	GRAND QUEST	7/07/2025	6:54	7/07/2025 7:56	8/07/2025 0:11	107	LOA 179 / BTB 50	MEL	800	
	CSAV RIO NEVADO	7/07/2025	8:15	7/07/2025 9:31	8/07/2025 2:58	106	LOA 183 / BTB 33	AKL	585	
	GLOBAL HIGHWAY	7/07/2025	18:30	8/07/2025 8:14	8/07/2025 22:59	107	LOA 200 / BTB 23	BNE	1924	
	ADRIA ACE	7/07/2025	23:00	8/07/2025 6:51	8/07/2025 16:57	106	LOA 176 / BTB 27	MEL	701	
	HOEGH DETROIT	8/07/2025	8:00	9/07/2025 1:27	9/07/2025 21:04	107	LOA 229 / BTB 44	MEL	826	
	COSCO TENGFEI	8/07/2025	13:00	9/07/2025 2:27	9/07/2025 10:59	105	LOA 183 / BTB 23		208	
	SWALLOW ACE	8/07/2025	16:00	8/07/2025 19:01	9/07/2025 12:58	106	LOA 200 / BTB 23	MEL	473	
	MORNING CORNELIA	9/07/2025	1:30	9/07/2025 16:09	10/07/2025 22:12	106	LOA 200 / BTB 26		1385	
	AMETHYST ACE	10/07/2025	13:00	11/07/2025 0:46	12/07/2025 1:06	106	LOA 200 / BTB 20	MEL	1288	
	TRANS FUTURE 7	10/07/2025	23:59	11/07/2025 7:30	11/07/2025 21:56	107	LOA 200 / BTB 17	BNE	1477	
	KARIYUSHI LEADER	12/07/2025	3:00	12/07/2025 4:11	13/07/2025 3:53	107	LOA 180 / BTB 18	BNE	698	
	CEPHEUS LEADER	12/07/2025	20:30	12/07/2025 21:32	13/07/2025 21:54	106	LOA 200 / BTB 21	BNE	673	
	MARINICKI	15/07/2025	6:15	15/08/2025 22:17	24/08/2025 12:04	103	LOA 199 / BTB 170	04/08-09/08/25 (10)		55,000T WHEAT
	NEPTUNE BARCELONA	16/07/2025	1:00	16/07/2025 2:14	17/07/2025 1:13	106	LOA 200 / BTB 25	MEL	1117	
	EASTERN HIGHWAY	16/07/2025	5:00	16/07/2025 7:30	16/07/2025 18:05	107	LOA 188 / BTB 16	YOK	171	DIRECT CALL - OK TO DISCHARGE
	MORNING CHAMPION	17/07/2025	14:55	17/07/2025 16:15	18/07/2025 2:04	107	LOA 200 / BTB 45	MEL	669	
	WALRUS ACE	18/07/2025	3:00	18/07/2025 4:05	18/07/2025 20:55	106	LOA 200 / BTB 35	MEL	1482	
	TOURMALINE ACE	18/07/2025	12:00	18/07/2025 14:21	19/07/2025 8:00	107	LOA 200 / BTB 15	MEL	1671	
REMAIN A	MERWEDEGRACHT	18/07/2025	17:30	18/07/2025 20:28	21/07/2025 15:54	105	LOA 142 / BTB 129			BLUESCOPE PROJECT
	JIUYANG BLOSSOM	19/07/2025	19:00	19/07/2025 20:24	20/07/2025 16:00	107	LOA 200 / BTB 26	BNE	1616	
	VIKING PASSAMA	19/07/2025	22:30	20/07/2025 0:26	20/07/2025 21:36	106	LOA 183 / BTB 32	BNE	1099	
15m mark	AMBER ARROW	20/07/2025	10:00	20/07/2025 21:36	22/07/2025 7:00	107	LOA 200 / BTB 45	BNE	1444	
	PORGY	22/07/2025	3:54	22/07/2025 5:14	22/07/2025 12:26	106	LOA 200 / BTB 25		264	DIRECT CALL - OK TO DISCHARGE
105 ONLY	ARABIAN SEA	22/07/2025	14:00	22/07/2025 16:25	23/07/2025 8:03	106	LOA 183 / BTB 33		993	
	OBERON	24/07/2025	6:30	24/07/2025 8:03	25/07/2025 2:00	107	LOA 237 / BTB 41		347	
FAILED IN	ISE BAY	24/07/2025	16:54	25/07/2025 20:37	5/08/2025 12:47	103	LOA 183 / BTB 156	22/07-27/07/25 (10)		31,000T WHEAT
	NEW DRIVE	24/07/2025	19:54	5/08/2025 17:01	15/08/2025 20:07	103	LOA 200 / BTB 171			CLINKER
	TRANS FUTURE 5	25/07/2025	3:00	25/07/2025 5:40	25/07/2025 21:08	106	LOA 200 / BTB 17	BNE	1279	
	ORCA ACE	25/07/2025	9:00	25/07/2025 10:12	26/07/2025 1:51	107	LOA 200 / BTB 35	MEL	1206	
	MORNING CALYPSO	26/07/2025	0:06	26/07/2025 3:45	27/07/2025 0:01	107	LOA 200 / BTB 24	BNE	1216	
	PAGNA	26/07/2025	8:00	26/07/2025 9:48	26/07/2025 22:00	106	LOA 183 / BTB 32	BNE	504	
	GRACIOUS ACE	27/07/2025	4:00	27/07/2025 9:12	28/07/2025 0:07	107	LOA 200 / BTB 24	MEL	815	

DATE	STEVE-DORE	VESSEL	VOYAGE	STARTING SHIFT	BERTH #	BERTH DELAY	LAYDOWN	MACHINERY REQUEST RECEIVED	MACHINERY REQUEST FILLED	MACHINERY ISSUES	NOTES
1/08/2025	LINX	HOEGH TRADER	181	NIGHT	107	N	EBLK, C BLOCK, Q BLOCK AND ESHED	Y	Y	NIL	
2/08/2025	QUBE	SALVIA ACE	166	NIGHT	106	N	H BLOCK AND M BLOCK	Y	Y	NIL	
2/08/2025	QUBE	KAIFONG	2504	EVENING	106	N	GSHED, K BLOCK AND P SHED	Y	Y	NIL	
3/08/2025	QUBE	BLUE RIDGE HIGHWAY	169	EVENING	107	N	EBLK, 107CON, C BLOCK AND ESHED	Y	Y	NIL	
4/08/2025	LINX	HERMES LEADER	076	EVENING	105	N	F BLOCK, H BLOCK AND N BLOCK	Y	Y	NIL	BERTH 105 UTILISED AS BERTH 106 AND 107 OCCUPIED.
4/08/2025	QUBE	TORINO	EE510	EVENING	107	N	EBLK, 107CON, GBLK, C BLOCK, Q BLOCK AND ESHED	Y	Y	NIL	
5/08/2025	QUBE	NEW DRIVE	0725	EVENING	103	N	DIRECT TO TRUCK	Y	Y	NIL	
5/08/2025	QUBE	IVORY ARROW	163	EVENING	107	N	EBLK, 107CON, C BLOCK, O BLOCK AND ESHED	Y	Y	NIL	
6/08/2025	QUBE	BBC GDANSK	0791	NIGHT	105	N	N BLOCK	Y	Y	NIL	
7/08/2025	QUBE	MORNING NINNI	00510	DAY	107	N	GBLK, C BLOCK, Q BLOCK AND ESHED	Y	Y	NIL	
7/08/2025	LINX	HOEGH SYDNEY	122	EVENING	105	N	H BLOCK, E SHED AND N BLOCK	Y	Y	NIL	BERTH 105 UTILISED AS BERTH 106 AND 107 OCCUPIED.
8/08/2025	LINX	RHEALEADER	134	DAY	107	N	C BLOCK, Q BLOCK AND O BLOCK	Y	Y	NIL	
9/08/2025	LINX	VIKING PAGLIA	PGI008	EVENING	105	N	F BLOCK AND H BLOCK	Y	Y	NIL	BERTH 105 UTILISED AS BERTH 106 AND 107 OCCUPIED.
9/08/2025	QUBE	MAASGRACHT	2505	EVENING	106	N	L BLOCK AND M BLOCK	Y	Y	NIL	
9/08/2025	QUBE	TITUS	EF510	EVENING	107	Y	EBLK, C BLOCK AND ESHED	Y	Y	NIL	BERTHING DELAYED DUE TO BERTH CONGESTION
10/08/2025	QUBE	TRANS FUTURE 6	160	EVENING	107	Y	107CON, A BLOCK, C BLOCK AND Q BLOCK	Y	Y	NIL	BERTHING DELAYED DUE TO BERTH CONGESTION
11/08/2025	QUBE	JUTHA MALEE	713	DAY	107	N	EXPORT ONLY	Y	Y	NIL	
13/08/2025	QUBE	GLOVIS CARAVEL	044	NIGHT	107	N	A BLOCK, C BLOCK AND O BLOCK	Y	Y	NIL	
13/08/2025	QUBE	AZUL ACE	035	EVENING	106	N	H BLOCK, L BLOCK AND N BLOCK	Y	Y	NIL	
14/08/2025	QUBE	DIAMOND QUEEN	1G	DAY	105	N	DIRECT TO TRUCK	Y	Y	NIL	
14/08/2025	QUBE	DANZIGERGRACHT	2507	DAY	106	N	L BLOCK	Y	Y	NIL	
14/08/2025	LINX	CSAV RIO NEVADO	25RN05	EVENING	107	N	C BLOCK AND Q BLOCK	Y	Y	NIL	
15/08/2025	LINX	GRAND QUEST	25GQ06	DAY	107	N	C BLOCK AND Q BLOCK	Y	Y	NIL	
15/08/2025	QUBE	MARINICKI	0727	EVENING	103	N	DIRECT TO TRUCK	Y	Y	NIL	
16/08/2025	LINX	APHRODITE LEADER	061	DAY	107	N	107CON, A BLOCK, C BLOCK, Q BLOCK AND O BLOCK	Y	Y	NIL	
17/08/2025	QUBE	MORNING CORNELIA	00512	DAY	105	N	F BLOCK, H BLOCK AND N BLOCK	Y	Y	NIL	BERTH 105 UTILISED AS BERTH 106 AND 107 OCCUPIED.
18/08/2025	QUBE	AAL DALIAN	25004	DAY	106	Y	I BLOCK, L BLOCK AND PSHE	Y	Y	NIL	BERTHING DELAYED DUE TO BERTH CONGESTION
18/08/2025	QUBE	SEASTAR HAWK	25096	EVENING	105	N	DIRECT TO TRUCK	Y	Y	NIL	
18/08/2025	QUBE	MARTORELL	179	EVENING	107	N	GBLK, C BLOCK, Q BLOCK AND ESHED	Y	Y	NIL	
19/08/2025	QUBE	MORNING CARA	00513	DAY	107	N	107CON, A BLOCK, O BLOCK AND ESHED	Y	Y	NIL	
20/08/2025	QUBE	GENIUS HIGHWAY	081	NIGHT	107	N	GBLK, 107CON, C BLOCK, Q BLOCK, O BLOCK AND ESHED	Y	Y	NIL	
21/08/2025	QUBE	TRANS FUTURE 7	161	NIGHT	107	N	EBLK, 107CON AND D BLOCK	Y	Y	NIL	D BLOCK UTILISED AS NOT ENOUGH SPACE IN C BLOCK
21/08/2025	QUBE	MORNING CAROL	EE511	EVENING	106	N	F BLOCK, H BLOCK, GSHED, I BLOCK, L BLOCK AND N BLOCK	Y	Y	NIL	
22/08/2025	LINX	LORD VISHNU	091	DAY	107	N	C BLOCK	Y	Y	NIL	
22/08/2025	QUBE	WISDOM ACE	095	EVENING	106	N	F BLOCK, H BLOCK, R BLOCK, L BLOCK AND N BLOCK	Y	Y	NIL	
23/08/2025	LINX	GOLIATH LEADER	123	NIGHT	107	N	EBLK, 107CON, A BLOCK, C BLOCK, Q BLOCK, O BLOCK AND ESHED	Y	Y	NIL	
23/08/2025	QUBE	EASTERN HIGHWAY	164	EVENING	106	N	B BLOCK, D BLOCK, F BLOCK, H BLOCK, I BLOCK, L BLOCK AND N BLOCK	Y	Y	NIL	
24/08/2025	QUBE	QC ISABELLA	JUL25	EVENING	103	Y	DIRECT TO TRUCK	Y	Y	NIL	BERTHING DELAYED DUE TO BERTH CONGESTION
25/08/2025	QUBE	FUGA	2	NIGHT	105	N	DIRECT TO TRUCK	Y	Y	NIL	
25/08/2025	QUBE	FREEDOM ACE	179	DAY	107	N	EBLK, A BLOCK, B BLOCK, C BLOCK AND O BLOCK	Y	Y	NIL	B BLOCK UTILISED AS NOT ENOUGH SPACE IN C BLOCK
26/08/2025	QUBE	NICHOLAS STANFORD	25102	EVENING	103	Y	DIRECT TO TRUCK	Y	Y	NIL	BERTHING DELAYED DUE TO BERTH CONGESTION
27/08/2025	LINX	HOEGH TROTTER	48	EVENING	107	N	EBLK, GBLK, C BLOCK, Q BLOCK AND ESHED	Y	Y	NIL	
28/08/2025	QUBE	PARSIFAL	EF511	EVENING	106	N	H BLOCK AND N BLOCK	Y	Y	NIL	
30/08/2025	QUBE	EUPHRATES HIGHWAY	114	EVENING	105	N	F BLOCK, M BLOCK AND N BLOCK	Y	Y	NIL	BERTH 105 UTILISED AS BERTH 106 AND 107 OCCUPIED. H BLOCK NOT UTILISED DUE TO BEING FULL
30/08/2025	LINX	HOEGH AURORA	6	EVENING	106	N	F BLOCK, H BLOCK, I BLOCK, L BLOCK AND PSHE	Y	Y	NIL	
31/08/2025	QUBE	KLEO OLDENDORFF	0825	NIGHT	103	Y	DIRECT TO TRUCK	Y	Y	NIL	BERTHING DELAYED DUE TO BERTH CONGESTION

Legend - Berth # and Laydown

	Primary
	Secondary
	Tertiary

TOTAL VESSELS FOR MONTH	QUBE	LINX
GREEN BERTH	32	9
ORANGE BERTH	2	3
RED BERTH	0	0
GREEN LAYDOWN	31	12
ORANGE LAYDOWN	3	0
RED LAYDOWN	0	0

NUMBER OF BERTHING DELAYS	6	0
NUMBER OF MACHINERY ISSUES/REQUESTS NOT MET	0	0

SEE ATTACHED SHEETS SHOWING BERTH AND CONGESTION DELAYS

VESSEL ETA'S									
NAME	ETA DATE	ETA TIME	POB	ETD	BERTH	BSD - TREATMENT	PREVIOUS PORT	VOLUME	WINDOW
HOEGH TRADER	31/07/2025	23:00	1/08/2025 0:23	1/08/2025 16:25	107	LOA 229 / BTB 36 (44)	MEL	606	
SALVIA ACE	1/08/2025	23:00	2/08/2025 0:03	2/08/2025 12:10	106	LOA 186 / BTB 29	MEL	500	
KAIFONG	2/08/2025	16:00	2/08/2025 18:08	9/08/2025 15:12	106	LOA 180 / BTB 155	BNE		CHINA STEEL - 7,600T
BLUE RIDGE HIGHWAY	3/08/2025	12:00	3/08/2025 13:18	4/08/2025 1:59	107	LOA 180 / BTB 22	BNE	404	
FUGA	3/08/2025	13:00	25/08/2025 4:31	27/08/2025 3:12	105	LOA 180 / BTB 154			7,000T SODA ASH
TORINO	4/08/2025	14:24	4/08/2024 15:54	5/08/2025 5:55	107	LOA 200 / BTB 41	BNE	770	
HERMES LEADER	4/08/2025	13:00	4/08/2025 13:50	5/08/2025 21:38	105	LOA 200 / BTB 30	BNE	1446	
IVORY ARROW	5/08/2025	14:00	5/08/2025 15:11	6/08/2025 5:52	107	LOA 200 / BTB 45	BNE	840	
BBC GDANSK	5/08/2025	21:00	5/08/2025 23:20	7/08/2025 17:00	105	LOA 122 / BTB 112	QTV		2500 MT PIPE
MORNING NINNI	7/08/2025	3:45	7/08/2025 5:01	7/08/2025 20:48	107	LOA 180 / BTB 18	BNE	1323	
HOEGH SYDNEY	7/08/2025	21:30	7/08/2025 22:43	8/08/2025 11:00	105	LOA 180 / BTB 18	MEL	498	
RHEA LEADER	8/08/2025	8:00	8/08/2025 8:47	9/08/2025 6:36	107	LOA 200 / BTB 21	DRW	343	
TITUS	8/08/2025	14:00	9/08/2025 11:51	10/08/2025 11:49	107	LOA 200 / BTB 47	BNE	129	
MAASGRACHT	9/08/2025	6:00	9/08/2025 16:56	12/08/2025 19:21	106	LOA 142 / BTB 129	PTL		TBM CARGO
JUTHA MALEE	9/08/2025	6:30	11/08/2025 5:37	12/08/2025 14:13	107	LOA 117 / BTB97	HIJ		JAPAN ARMY CARGO
VIKING PAGLIA	9/08/2025	13:00	9/08/2025 14:27	10/08/2025 14:57	105	LOA 183 / BTB 32		1236	
TRANS FUTURE 6	9/08/2025	16:30	10/08/2025 11:49	10/08/2025 21:54	107	LOA 200 / BTB 17	BNE	1261	
GLOVIS CARAVEL	12/08/2025	18:00	12/08/2025 18:58	13/08/2025 14:40	107	LOA 200 / BTB 28	MEL	1793	
AZUL ACE	13/08/2025	12:15	13/08/2025 14:13	13/08/2025 23:59	106	LOA 200 / BTB 23	MEL	563	
DIAMOND QUEEN	14/08/2025	6:00	14/08/2025 5:30	15/08/2025 15:00	105	LOA 200 / BTB 170			4,000T KOCH
DANZIGERGRACHT	14/08/2025	8:00	14/08/2025 8:12	18/08/2025 3:53	106	LOA 157 / BTB 143			TBM CARGO
CSAV RIO NEVADO	14/08/2025	12:00	14/08/2025 14:12	15/08/2025 9:11	107	LOA 183 / BTB 33	MEL	781	
AAL DALIAN	14/08/2025	15:24	18/08/2025 5:53	21/08/2025 2:00	106	LOA 194 / BTB 180			180 X CONTAINERS - QUBE
GRAND QUEST	15/08/2025	9:30	15/08/2025 11:30	15/08/2025 23:55	107	LOA 179 / BTB 50		765	
APHRODITE LEADER	16/08/2025	5:00	16/08/2025 6:12	17/08/2025 8:05	107	LOA 200 / BTB 22	BNE	1015	
KLEO OLDENDORFF	16/08/2025	20:18	31/08/2025 2:43	4/09/2025 21:28	103	LOA 229 / BTB 203	26/08-01/09/25 (10)		60,000T WHEAT
MORNING CORNELIA	17/08/2025	3:00	17/08/2025 5:05	17/08/2025 21:27	105	LOA 200 / BTB 26	BNE	1480	
SEASTAR HAWK	18/08/2025	15:30	18/08/2025 17:15	24/08/2025 10:12	105	LOA 183 / BTB 155	NTL		7,000T UREA
MARTORELL	18/08/2025	13:00	18/08/2025 14:12	18/08/2025 23:54	107	LOA 200 / BTB 32	MEL	427	
NICHOLAS STANFORD	19/08/2025	4:30	26/08/2025 21:15	30/08/2025 16:35	103	LOA 200 / BTB 177			12,000T SODA ASH
MORNING CARA	19/08/2025	7:00	19/08/2025 8:15	19/08/2025 22:49	107	LOA 200 / BTB 24	BNE	1499	
GENIUS HIGHWAY	19/08/2025	22:00	20/08/2025 0:58	20/08/2025 17:00	107	LOA 200 / BTB 27	BNE	1171	
QC ISABELLA	19/08/2025	23:00	24/08/2025 14:17	26/08/2025 18:56	103	LOA 200 / BTB 171	06/08-09/08/25 (10)		30,000T WHEAT
TRANS FUTURE 7	21/08/2025	0:30	21/08/2025 1:40	21/08/2025 15:55	107	LOA 200 / BTB 17	BNE	1172	
MORNING CAROL	21/08/2025	13:54	21/08/2025 15:36	22/08/2025 7:00	106	LOA 200 / BTB 40		750	
LORD VISHNU	22/08/2025	1:30	22/08/2025 9:07	22/08/2025 19:08	107	LOA 180 / BTB 18	BNE	706	
WISDOM ACE	22/08/2025	17:00	22/08/2025 18:08	23/08/2025 6:02	106	LOA 200 / BTB 24		1403	
GOLIATH LEADER	22/08/2025	20:45	22/08/2025 21:28	23/08/2025 21:57	107	LOA 200 / BTB 45	BNE	1009	
EASTERN HIGHWAY	23/08/2025	15:30	23/08/2025 16:18	24/08/2025 4:00	106	LOA 188 / BTB 16	ICH	507	DIRECT CALL - OK TO DISCHARGE
FREEDOM ACE	25/08/2025	7:00	25/08/2025 9:39	26/08/2025 5:54	107	LOA 200 / BTB 20	BNE	1915	
HOEGH TROTTER	27/08/2025	14:00	27/08/2025 13:37	28/08/2025 21:58	107	LOA 200 / BTB 29	MEL	902	DEPARTURE DELAYED DUE TO HIC
PARSIFAL	28/08/2025	19:24	28/08/2025 20:40	29/08/2025 22:30	106	LOA 265 / BTB 43	NTL	243	
HOEGH AURORA	30/08/2025	1:00	30/08/2025 21:48	1/09/2025 15:20	106	LOA 200 / BTB 30	MEL	922	
EUPHRATES HIGHWAY	30/08/2025	11:30	30/08/2025 12:40	31/08/2025 7:39	105	LOA 200 / BTB 24	BNE	415	

BUGS FO

DATE	STEVE-DORE	VESSEL	VOYAGE	STARTING SHIFT	BERTH #	BERTH DELAY	LAYDOWN	MACHINERY REQUEST RECEIVED	MACHINERY REQUEST FILLED	MACHINERY ISSUES	NOTES
1/09/2025	LINX	VIKING PASSAMA	PSM009	EVENING	106	N	D BLOCK, F BLOCK, H BLOCK, R BLOCK, L BLOCK AND PSCHED	Y	Y	NIL	
2/09/2025	QUBE	PACIFIC GREBE		NIGHT	107	N	EXPORT ONLY	Y	Y	NIL	
2/09/2025	QUBE	MORNING CHARLOTTE	O0515	EVENING	105	N	B BLOCK, D BLOCK AND N BLOCK	Y	Y	NIL	BERTH 105 UTILISED AS BERTH 106 AND 107 OCCUPIED. H BLOCK NOT UTILISED DUE TO BEING FULL
3/09/2025	QUBE	GAN JIANG KOU	006	NIGHT	107	N	107CON, C BLOCK AND O BLOCK	Y	Y	NIL	
4/09/2025	QUBE	NOCC ATLANTIC	EE512	NIGHT	106	N	C BLOCK, ESHED, L BLOCK AND PSCHED	Y	Y	NIL	C BLOCK UTILISED AS NOT ENOUGH SPACE IN H BLOCK
4/09/2025	QUBE	PRECIOUS ACE	106	EVENING	107	N	DID NOT DISCHARGE DUE TO QUARANTINE ISSUE	Y	Y	NIL	
5/09/2025	QUBE	PRECIOUS ACE	LAY-UP	EVENING	105	N	D BLOCK, F BLOCK AND N BLOCK	Y	Y	NIL	H BLOCK NOT UTILISED AS NOT ENOUGH SPACE
5/09/2025	QUBE	TRANS LEADER	018	EVENING	106	N	H BLOCK AND L BLOCK	Y	Y	NIL	
6/09/2025	QUBE	ARC HONOR	EF512	DAY	107	N	EBLK, GBLK, Q BLOCK AND ESHED	Y	Y	NIL	
8/09/2025	QUBE	CF DIAMOND	0825	NIGHT	103	N	DIRECT TO TRUCK	Y	Y	NIL	
9/09/2025	QUBE	JUPITER SPIRIT	079	EVENING	106	N	D BLOCK, F BLOCK, H BLOCK AND N BLOCK	Y	Y	NIL	
9/09/2025	LINX	GRAND COSMO	GCM038	EVENING	107	N	107CON AND C BLOCK	Y	Y	NIL	
10/09/2025	QUBE	VIKING PAGLIA	O0517	DAY	105	N	F BLOCK	Y	Y	NIL	BERTH 105 UTILISED AS BERTH 106 AND 107 OCCUPIED. H BLOCK NOT UTILISED DUE TO BEING FULL
11/09/2025	QUBE	HAWAIIAN HIGHWAY	083	NIGHT	107	N	EBLK, 107CON, A BLOCK, C BLOCK, Q BLOCK, O BLOCK AND ESHED	Y	Y	NIL	
11/09/2025	QUBE	TRANS FUTURE 5	162	DAY	106	Y	D BLOCK, H BLOCK AND M BLOCK	Y	Y	NIL	BERTHING DELAYED DUE TO HIGH WINDS
12/09/2025	LINX	VICTORY RAY	008	DAY	107	N	A BLOCK, C BLOCK AND Q BLOCK	Y	Y	NIL	
12/09/2025	LINX	HYPERION LEADER	134	EVENING	106	N	F BLOCK, H BLOCK AND N BLOCK	Y	Y	NIL	
13/09/2025	QUBE	BLUE RIDGE HIGHWAY	171	EVENING	107	N	A BLOCK AND C BLOCK	Y	Y	NIL	
14/09/2025	QUBE	YASA MIMOSA	2504	EVENING	106	N	GSHED, K BLOCK, J BLOCK, M BLOCK AND PSCHED	Y	Y	NIL	
15/09/2025	LINX	GRAND QUEST	25GQ07	EVENING	105	N	F BLOCK AND H BLOCK	Y	Y	NIL	BERTH 105 UTILISED AS BERTH 106 AND 107 OCCUPIED.
16/09/2025	LINX	DIONE LEADER	092	DAY	107	N	107STRG, A BLOCK AND D BLOCK	Y	Y	NIL	D BLOCK UTILISED AS NOT ENOUGH SPACE IN C BLOCK
17/09/2025	LINX	MORNING MARGARETA	032	EVENING	107	N	C BLOCK AND Q BLOCK	Y	Y	NIL	
18/09/2025	QUBE	MARIO	0925	NIGHT	103	Y	DIRECT TO TRUCK	Y	Y	NIL	
19/09/2025	QUBE	AAL HONG KONG	25007	NIGHT	106	Y	B BLOCK, GSHED, L BLOCK AND N BLOCK	Y	Y	NIL	B BLOCK UTILISED AS CARGO IS LONG STAY CARGO
19/09/2025	QUBE	GLOVIS CHAMPION	002	EVENING	107	N	C BLOCK, Q BLOCK AND O BLOCK	Y	Y	NIL	
20/09/2025	QUBE	DUGONG ACE	055	DAY	105	N	H BLOCK AND R BLOCK	Y	Y	NIL	BERTH 105 UTILISED AS BERTH 106 AND 107 OCCUPIED.
20/09/2025	QUBE	TRANQUIL ACE	123	EVENING	107	N	EBLK, A BLOCK, B BLOCK, Q BLOCK AND O BLOCK	Y	Y	NIL	B BLOCK UTILISED AS NOT ENOUGH SPACE IN C BLOCK
21/09/2025	QUBE	GARNET ACE	124	DAY	107	N	EBLK AND D BLOCK	Y	Y	NIL	D BLOCK UTILISED AS NOT ENOUGH SPACE IN C BLOCK
22/09/2025	QUBE	SIERRA NEVADA HIGHWAY	180	DAY	105	N	H BLOCK AND N BLOCK	Y	Y	NIL	BERTH 105 UTILISED AS BERTH 106 AND 107 OCCUPIED.
22/09/2025	LINX	THEMIS LEADER	055	DAY	107	N	F BLOCK	Y	Y	NIL	F BLOCK UTILISED AS NOT ENOUGH SPACE IN C BLOCK
23/09/2025	QUBE	PAGNA	040	EVENING	105	Y	D BLOCK, F BLOCK AND N BLOCK	Y	Y	NIL	H BLOCK NOT UTILISED AS NOT ENOUGH SPACE
24/09/2025	LINX	CSAV RIO NEVADO	25RN06	DAY	106	N	F BLOCK AND H BLOCK	Y	Y	NIL	
24/09/2025	QUBE	BOHEME	EF513	DAY	107	N	EBLK, GBLK, 107CON, 107STRG, C BLOCK, Q BLOCK AND ESHED	Y	Y	NIL	
25/09/2025	QUBE	TRANS FUTURE 6	161	DAY	107	N	107CON, A BLOCK, C BLOCK, O BLOCK AND ESHED	Y	Y	NIL	
26/09/2025	QUBE	DARYA DIYA	0601	NIGHT	103	N	DIRECT TO TRUCK	Y	Y	NIL	
27/09/2025	LINX	TARIFA	TFA150	NIGHT	107	N	EBLK, 107CON, A BLOCK, C BLOCK, Q BLOCK, O BLOCK AND ESHED	Y	Y	NIL	
27/09/2025	LINX	HOEGH OSAKA	124	DAY	106	N	F BLOCK, H BLOCK, L BLOCK AND PSCHED	Y	Y	NIL	
28/09/2025	LINX	POSITIVE LEADER	134	EVENING	107	N	EBLK, 107STG, A BLOCK AND GSHED	Y	Y	NIL	
29/09/2025	QUBE	WISTERIA ACE	142	DAY	105	N	D BLOCK, M BLOCK, R BLOCK AND N BLOCK	Y	Y	NIL	BERTH 105 UTILISED AS BERTH 106 AND 107 OCCUPIED. H BLOCK NOT UTILISED DUE TO BEING FULL
29/09/2025	QUBE	AMERICAN HIGHWAY	225	DAY	106	N	D BLOCK, F BLOCK, M BLOCK AND N BLOCK	Y	Y	NIL	H BLOCK NOT UTILISED AS NOT ENOUGH SPACE
30/09/2025	QUBE	ANIARA	EF513	DAY	106	N	F BLOCK, H BLOCK, L BLOCK AND N BLOCK	Y	Y	NIL	
30/09/2025	LINX	HOEGH TRAVELLER	52	DAY	107	N	EBLK, GBLK, 107CON, 107STRG, A BLOCK, C BLOCK, Q BLOCK, O BLOCK AND GSHED	Y	Y	NIL	

Legend - Berth # and Laydown  
 Primary  
 Secondary  
 Tertiary

TOTAL VESSELS FOR MONTH	QUBE	LINX
GREEN BERTH	28	14
ORANGE BERTH	21	13
RED BERTH	7	1
GREEN LAYDOWN	0	0
ORANGE LAYDOWN	20	12
RED LAYDOWN	8	2
	0	0


NUMBER OF BERTHING DELAYS	0	0	SEE ATTACHED SHEETS SHOWING BERTH AND CONGESTION DELAYS
NUMBER OF MACHINERY ISSUES/REQUESTS NOT MET	4	0	

VESSEL ETA'S										
NAME	ETA DATE	ETA TIME	POB	ETD	BERTH	BSD - TREATMENT	PREVIOUS PORT	VOLUME	WINDOW	
VIKING PASSAMA	1/09/2025	20:00	1/09/2025 21:03	2/09/2025 17:52	106	LOA 183 / BTB 32	BNE	1073		
PACIFIC GREBE	2/09/2025	9:53	2/09/2025 11:10	4/09/2025 7:21	107	LOA 104 / BTB 78				ANSTO
GAN JIANG KOU	2/09/2025	7:12	2/09/2025 19:55	3/09/2025 16:13	106	LOA 200 / BTB 47	MEL	1055		
MORNING CHARLOTTE	2/09/2025	13:00	2/09/2025 15:10	3/09/2025 6:02	105	LOA 200 / BTB 26	BNE	1281		
NOCC ATLANTIC	3/09/2025	22:00	3/09/2025 23:39	4/09/2025 19:13	106	LOA 200 / BTB 40	MEL	646		
PRECIOUS ACE	4/09/2025	17:30	4/09/2025 18:46	7/09/2025 23:03	105	LOA 200 / BTB 24	MEL	1177		MOVED 107-105 DUE BMSB FOUND ON BOARD
TRANS LEADER - COSCO	5/09/2025	13:00	5/09/2025 20:00	6/09/2025 5:58	106	LOA 180 / BTB 20	MEL	586		
ARC HONOR	6/09/2025	8:48	6/09/2025 10:34	7/09/2025 10:56	107	LOA 230 / BTB 34	BNE	347		
CF DIAMOND	7/09/2025	22:45	8/09/2025 1:18	17/09/2025 12:00	103	LOA 190 / BTB 166	TMI			CLINKER
GRAND COSMO	9/09/2025	8:30	9/09/2025 12:05	10/09/2025 7:42	107	LOA 200 / BTB 25	BNE	1249		
JUPITER SPIRIT	9/09/2025	16:30	9/09/2025 17:36	11/09/2025 7:16	106	LOA 183 / BTB 19	MEL	890		
MARIO	9/09/2025	21:00	17/09/2025 23:52	22/09/2025 18:39	103	LOA 229 / BTB 198	10/09-16/09/25 (10)			70,000T WHEAT
VIKING PAGLIA	10/09/2025	4:42	10/09/2025 7:05	13/09/2025 0:53	105	LOA 183 / BTB 32	BNE	770		YELLOW SPOTTED FOUND ON BOARD - TREATMENT REQUIRED/ FAILED FIRST INSPECTION
HAWAIIAN HIGHWAY	10/09/2025	22:30	10/09/2025 22:12	11/09/2025 16:21	107	LOA 200 / BTB 23	BNE	1129		
TRANS FUTURE 5	11/09/2025	2:00	11/09/2025 11:27	11/09/2025 21:03	106	LOA 200 / BTB 17	BNE	1091		BERTHING DELAYED DUE TO HIGH WINDS
VICTORY RAY	12/09/2025	8:00	12/09/2025 9:25	12/09/2025 21:26	107	LOA 189 / BTB 41	BNE	906		
HYPERION LEADER	12/09/2025	14:00	12/09/2025 15:23	13/09/2025 8:15	106	LOA 190 / BTB 18	BNE	651		
BLUE RIDGE HIGHWAY	13/09/2025	16:30	13/09/2025 16:57	14/09/2025 8:55	107	LOA 180 / BTB 22	BNE	843		
YASA MIMOSA	14/09/2025	12:00	14/09/2025 12:59	14/09/2025 21:23	106	LOA 180 / BTB 157	BNE			CHINA STEEL
GRAND QUEST	15/09/2025	18:55	15/09/2025 20:01	16/09/2025 7:55	105	LOA 179 / BTB 50	MEL	671		
DIONE LEADER	16/09/2025	3:00	16/09/2025 4:30	17/09/2025 15:11	107	LOA 200 / BTB 21	BNE	2273		
MORNING MARGARETA	17/09/2025	21:00	17/09/2025 21:35	19/09/2025 0:22	107	LOA 180 / BTB 18	LCH	818		DIRECT CALL - DISCHARGE APPROVED
AAL HONG KONG	17/09/2025	21:24	18/09/2025 23:52	22/09/2025 12:56	106	LOA 194 / BTB 180				STRUCTURAL STEEL
GLOVIS CHAMPION	19/09/2025	16:00	19/09/2025 17:34	20/09/2025 15:53	107	LOA 200 / BTB 37	MEL	1720		
DUGONG ACE	20/09/2025	10:00	20/09/2025 11:11	20/09/2025 20:51	105	LOA 200 / BTB 35	MEL	489		
TRANQUIL ACE	20/09/2025	17:00	20/09/2025 17:40	21/09/2025 4:54	107	LOA 200 / BTB 23	MEL	679		
GARNET ACE	21/09/2025	10:00	21/09/2025 10:57	22/09/2025 0:54	107	LOA 200 / BTB 20	MEL	1379		
SIERRA NEVADA HIGHWAY	22/09/2025	1:00	22/09/2025 6:49	22/09/2025 15:53	105	LOA 183 / BTB 19	BNE	362		
THEMIS LEADER	21/09/2025	20:00	22/09/2025 3:01	24/09/2025 5:59	107	LOA 200 / BTB 26	BNE	1484		
PAGNA	23/09/2025	10:00	23/09/2025 16:05	25/09/2025 0:12	105	LOA 183 / BTB 32	YOK	807		DIRECT CALL - REQUIRES TREATMENT AND INSPECTION
BOHEME	24/09/2025	0:30	24/09/2025 13:30	25/09/2025 5:02	107	LOA 228 / BTB 42	MEL	1054		
CSAV RIO NEVADO	24/09/2025	9:00	24/09/2025 10:37	25/09/2025 1:00	106	LOA 183 / BTB 33	MEL	755		
TRANS FUTURE 6	25/09/2025	9:30	25/09/2025 11:15	26/09/2025 0:03	107	LOA 200 / BTB 17	BNE	1274		
DARYA DIYA - ISS	25/09/2025	22:00	25/09/2025 23:31	27/09/2025 17:11	103	LOA 200 / BTB 171	BNE			24,500T WHEAT
TARIFA - EUKOR	26/09/2025	19:30	26/09/2025 22:40	27/09/2025 23:00	107	LOA 200 / BTB 45	BNE	1381		
HOEGH OSAKA	27/09/2025	4:00	27/09/2025 5:25	28/09/2025 0:15	106	LOA 180 / BTB 16	MEL	756		
POSITIVE LEADER	28/09/2025	20:00	28/09/2025 20:41	29/09/2025 16:55	107	LOA 180 / BTB 20	BNE	421		
AMERICAN HIGHWAY	29/09/2025	6:00	29/09/2025 7:01	30/09/2025 2:04	106	LOA 179 / BTB 16	BNE	931		
WISTERIA ACE	29/09/2025	8:30	29/09/2025 11:40	30/09/2025 1:14	105	LOA 200 / BTB 21	MEL	1229		
HOEGH TRAVELLER	30/09/2025	6:00	30/09/2025 7:17	1/10/2025 0:54	107	LOA 200 / BTB 29	MEL	843		
ANIARA	30/09/2025	12:00	30/09/2025 13:11	1/10/2025 7:56	106	LOA 237 / BTB 49	BNE	244		

1000hrs 0

FAILED IN

DATE	STEVEDORE	VESSEL	VOYAGE	STARTING SHIFT	BERTH #	BERTH DELAY	LAYDOWN	MACHINERY REQUEST RECEIVED	MACHINERY REQUEST FILLED	MACHINERY ISSUES	NOTES
1/10/2025	QUBE	TONSBERG	EF514	DAY	107	N	1075RTG, C BLOCK, Q BLOCK AND ESHED	Y	Y	N	
2/10/2025	LINX	INDIAN OCEAN	130	DAY	106	N	EXPORT ONLY	Y	Y	N	
2/10/2025	QUBE	WATATSUMI	1025	DAY	103	Y	DIRECT TO TRUCK	Y	Y	N	DELAYED BERTHING DUE TO BERTH CONGESTION
5/10/2025	QUBE	PEGASUS ACE	326	DAY	105	N	H BLOCK	Y	Y	N	BERTH 105 UTILISED AS BERTH 106 AND 107 OCCUPIED.
6/10/2025	QUBE	MORNING COURIER	00520	NIGHT	107	N	1075TRG, C BLOCK, Q BLOCK AND E SHED	Y	Y	N	
7/10/2025	QUBE	ONYX ARROW	122	DAY	105	N	F BLOCK, H BLOCK AND N BLOCK	Y	Y	N	BERTH 105 UTILISED AS BERTH 106 AND 107 OCCUPIED.
7/10/2025	QUBE	GAN JIANG KOU	007	EVENING	107	Y	107CON, C BLOCK AND O BLOCK	Y	Y	N	BERTHING DELAYED DUE TO REQUIRING BERTH 106 OR 107 ONLY
8/10/2025	QUBE	NABUCCO	EE514	DAY	107	N	EBLK, GBLK, A BLOCK, O BLOCK AND ESHED	Y	Y	N	DELAYED DUE TO ONLY BEING ABLE TO BERTH AT 105 AND BERTH WAS OCCUPIED. C BLOCK NOT UTILISED AS FULL
9/10/2025	QUBE	FREEDOM ACE	180	EVENING	105	N	F BLOCK, H BLOCK, R BLOCK AND 105STRG	Y	Y	N	BERTH 105 UTILISED AS BERTH 106 AND 107 OCCUPIED.
9/10/2025	QUBE	AAL DAMPIER	25006	NIGHT	106	N	B BLOCK, F BLOCK, M BLOCK AND GSHED	Y	Y	N	WAS ONLY ABLE TO UTILISE AREAS THAT WOULD HOLD LARGE QUANTITIES OF CARGO
10/10/2025	QUBE	TRANS FUTURE 7	162	DAY	107	N	EBLK, A BLOCK, C BLOCK, Q BLOCK, O BLOCK AND ESHED	Y	Y	N	
11/10/2025	QUBE	NORTHERN HIGHWAY	159	DAY	105	N	F BLOCK	Y	Y	N	H BLOCK NOT UTILISED AS FULL
13/10/2025	QUBE	UNION TAYLOR	027	DAY	103	Y	DIRECT TO TRUCK	Y	Y	N	BERTHING DELAYED DUE TO NOT ENOUGH GRAIN
14/10/2025	QUBE	TOSCA	00521	DAY	107	N	107CON, A BLOCK, C BLOCK AND O BLOCK	Y	Y	N	
15/10/2025	QUBE	TRANS LEADER	19	DAY	106	N	H BLOCK AND L BLOCK	Y	Y	N	
15/10/2025	QUBE	VIKING EMERALD	VE0295	EVENING	107	N	EBLK, C BLOCK AND ESHED	Y	Y	N	
16/10/2025	QUBE	VIKING OCEAN	023	EVENING	106	N	F BLOCK, H BLOCK AND M BLOCK	Y	Y	N	
17/10/2025	QUBE	STELLINA	3	DAY	106	N	L BLOCK	Y	Y	N	
17/10/2025	LINX	GRAND QUEST	25GQ08	DAY	107	N	C BLOCK	Y	Y	N	
17/10/2025	QUBE	ARABIAN SEA	00524	EVENING	105	N	H BLOCK, R BLOCK, N BLOCK AND GEARSTORE	Y	Y	N	BERTH 105 UTILISED AS 107 OCCUPIED AND IS UNABLE TO BERTH INTO 106
18/10/2025	LINX	PHEONIX LEADER	061	NIGHT	107	N	107CON, EBLK, A BLOCK, C BLOCK, Q BLOCK, O BLOCK AND ESHED	Y	Y	N	
19/10/2025	LINX	KARIYUSHI LEADER	088	NIGHT	107	Y	A BLOCK	Y	Y	N	BERTHING DELAYED DUE TO BERTH CONGESTION. C BLOCK NOT UTILISED AS FULL
20/10/2025	QUBE	BBC OREGON	6083	NIGHT	106	Y	EXPORT ONLY	Y	Y	N	BERTHING DELAYED DUE TO ROTAINER ISSUES
20/10/2025	LINX	GRACEFUL LEADER	131	DAY	105	N	F BLOCK, H BLOCK AND N BLOCK	Y	Y	N	BERTH 105 UTILISED AS BERTH 106 AND 107 OCCUPIED.
20/10/2025	LINX	HOEGH AUSTRALIS	4	DAY	107	Y	107CON, EBLK, GBLK, A BLOCK, B BLOCK AND ESHED	Y	Y	N	BERTHING DELAYED DUE TO BERTH CONGESTION. C BLOCK NOT UTILISED AS FULL
21/10/2025	QUBE	MORNING CAROLINE	00525	DAY	107	N	EBLK, A BLOCK, B BLOCK, Q BLOCK AND O BLOCK	Y	Y	N	C BLOCK NOT UTILISED AS FULL
22/10/2025	QUBE	ORCHID ACE	151	NIGHT	105	N	B BLOCK, D BLOCK, F BLOCK, H BLOCK, R BLOCK, N BLOCK AND GEARSTORE	Y	Y	N	BERTH 105 UTILISED AS BERTH 106 AND 107 OCCUPIED.
23/10/2025	LINX	VIKING PASSAMA	PSM011	DAY	107	N	EBLK, C BLOCK, Q BLOCK AND ESHED	Y	Y	N	
24/10/2025	QUBE	BLUE RIDGE HIGHWAY	172	DAY	106	Y	F BLOCK AND H BLOCK	Y	Y	N	BERTHING DELAYED BY KLINE FOR OPERATION REASONS
24/10/2025	QUBE	NEW CENTURY 1	199	EVENING	107	N	A BLOCK, C BLOCK AND O BLOCK	Y	Y	N	
25/10/2025	QUBE	ANGLO RED	48	DAY	103	Y	DIRECT TO TRUCK	Y	Y	N	BERTHING DELAYED DUE TO NOT ENOUGH GRAIN
26/10/2025	QUBE	FOREST TRADER	1025	NIGHT	105	N	DIRECT TO TRUCK	Y	Y	N	BERTH 105 UTILISED AS BERTH 106 AND 107 OCCUPIED.
26/10/2025	QUBE	TONGALA	EF515	DAY	107	N	EBLK, GBLK, A BLOCK AND ESHED	Y	Y	N	C BLOCK NOT UTILISED AS FULL
26/10/2025	QUBE	VICTORIOUS ACE	083	EVENING	106	N	F BLOCK, H BLOCK AND M BLOCK	Y	Y	N	
28/10/2025	LINX	HOEGH MOONLIGHT	02	EVENING	107	N	EBLK, GBLK, 107CON, C BLOCK AND ESHED	Y	Y	N	
30/10/2025	QUBE	MORNING CATHERINE	EE515	DAY	107	N	GBLK, 1075TRG, C BLOCK AND ESHED	Y	Y	N	
30/10/2025	LINX	CRUX LEADER	014	EVENING	106	N	F BLOCK, H BLOCK AND L BLOCK	Y	Y	N	

Legend - Berth # and Laydown  

 Primary  
 Secondary  
 Tertiary

	QUBE	LINX
TOTAL VESSELS FOR MONTH	28	9
GREEN BERTH	22	8
ORANGE BERTH	6	1
RED BERTH	0	0
GREEN LAYDOWN	23	7
ORANGE LAYDOWN	5	2
RED LAYDOWN	0	0

	QUBE	LINX
NUMBER OF BERTHING DELAYS	6	2
NUMBER OF MACHINERY ISSUES/REQUESTS NOT MET	0	0


SEE ATTACHED SHEETS SHOWING BERTH AND CONGESTION DELAYS

10 DAY - 28/09

BERTH 26/10/25

VESSEL ETA'S										
NAME	ETA DATE	ETA TIME	POB	ETD	BERTH	BSD - TREATMENT	PREVIOUS PORT	VOLUME	WINDOW	
WATATSUMI - BERTHING 01/10/25	28/09/2025	13:18	2/10/2025 4:15	8/10/2025 5:45	103	LOA 200 / BTB 171	28/09-04/10/25 (10)			60,500T WHEAT
TONSBERG	1/10/2025	8:48	1/10/2025 10:15	2/10/2025 1:00	107	LOA 265 / BTB 43	BNE	180		
INDIAN OCEAN	2/10/2025	6:50	2/10/2025 8:25	9/10/2025 17:10	106	LOA 180 / BTB 154	LHE			EXPORT SLAB
ANGLO RED - WAVE SHIPPING	1/10/2025	23:18	25/10/2025 4:47	1/11/2025 15:15	103	LOA 229 / BTB 200	15/10-25/10/25 (21)			71,500T WHEAT
UNION TAYLOR - BERTHING 10/10/25	3/10/2025	14:30	13/10/2025 4:58	16/10/2025 18:00	103	LOA 180 / BTB 154	10/10-12/10/25 (10)			37,000 WHEAT
PEGASUS ACE	5/10/2025	4:30	5/10/2025 5:38	5/10/2025 18:00	105	LOA 175 / BTB 45	MEL	798		
MORNING COURIER	5/10/2025	20:12	5/10/2025 21:29	7/10/2025 15:06	107	LOA 200 / BTB 45	BNE	1319		
GAN JIANG KOU	6/10/2025	9:06	7/10/2025 17:20	8/10/2025 7:14	107	LOA 200 / BTB 47		871		
ONYX ARROW	7/10/2025	8:00	7/10/2025 9:06	7/10/2025 21:56	105	LOA 200 / BTB 45	BNE	1211		
NABUCCO	8/10/2025	6:00	8/10/2025 9:12	9/10/2025 0:10	107	LOA 200 / BTB 46	BNE	1178		
FREEDOM ACE	9/10/2025	12:00	9/10/2025 12:59	10/10/2025 4:54	105	LOA 200 / BTB 20	MEL	944		
AAL DAMPIER	9/10/2025	18:00	9/10/2025 18:46	12/10/2025 5:58	106	LOA 149 / BTB 135	NTL			PROJECT CARGO/STEEL
TRANS FUTURE 7	10/10/2025	9:00	10/10/2025 10:00	10/10/2025 23:26	107	LOA 200 / BTB 17	BNE	1394		
NORTHERN HIGHWAY	10/10/2025	22:00	10/10/2025 23:04	11/10/2025 19:44	105	LOA 188 / BTB 16	BNE	699		
BBC OREGON	12/10/2025	19:00	19/10/2025 22:47	21/10/2025 16:20	106	LOA 138 / BTB 125	NTL			5000MT COPPER CONS
TOSCA	14/10/2025	5:00	14/10/2025 6:10	14/10/2025 20:54	107	LOA 200 / BTB 33	BNE	1423		BUG FOUND ON BOARD
TRANS LEADER - COSCO	15/10/2025	4:00	15/10/2025 5:56	15/10/2025 16:51	106	LOA 180 / BTB 20	MEL	580		
VIKING EMERALD	15/10/2025	15:00	15/10/2025 16:25	16/10/2025 2:56	107	LOA 167 / BTB 22	BNE	631		
VIKING OCEAN	16/10/2025	14:30	16/10/2025 15:40	17/10/2025 3:20	106	LOA 167 / BTB 22	BNE	941		
GRAND QUEST	17/10/2025	7:30	17/10/2025 8:32	17/10/2025 20:45	107	LOA 179 / BTB 50	MEL	1054		
STELLINA	17/10/2025	12:00	17/10/2025 11:41	19/10/2025 21:00	106	LOA 174 / BTB 149	MEL			2,400T BEAM
ARABIAN SEA	17/10/2025	15:00	17/10/2025 15:36	18/10/2025 2:56	105	LOA 183 / BTB 33	BNE	828		
PHOENIX LEADER	17/10/2025	19:00	17/10/2025 22:52	18/10/2025 20:58	107	LOA 200 / BTB 26	BNE	1231		
KARIYUSHI LEADER	18/10/2025	4:00	18/10/2025 23:15	20/10/2025 3:14	107	LOA 180 / BTB 18	BNE	493		
HOEGH AUSTRALIS	18/10/2025	14:00	20/10/2025 7:31	21/10/2025 4:28	107	LOA 200 / BTB 29	MEL	1122		
GRACEFUL LEADER	20/10/2025	10:30	20/10/2025 11:35	21/10/2025 20:13	105	LOA 200 / BTB 45	BNE	1227		
MORNING CAROLINE	21/10/2025	5:45	21/10/2025 7:24	22/10/2025 1:00	107	LOA 200 / BTB 26		1588		
ORCHID ACE	21/10/2025	13:00	21/10/2025 19:43	22/10/2025 23:56	106	LOA 200 / BTB 21	MEL	2367		
BLUE RIDGE HIGHWAY	22/10/2025	15:00	24/10/2025 3:54	24/10/2025 16:45	106	LOA 180 / BTB 22	BNE	615		BERTHING DELAYED BY KLINE
VIKING PASSAMA	23/10/2025	11:30	23/10/2025 12:48	24/10/2025 6:59	107	LOA 183 / BTB 32	MEL	1033		
CENTURY 1	24/10/2025	8:45	24/10/2025 9:54	24/10/2025 23:58	107	LOA 200 / BTB 26	BNE	1620		
FOREST TRADER	25/10/2025	22:00	25/10/2025 23:50	3/11/2025 12:39	105	LOA 177 / BTB 152	TMI			CLINKER
TONGALA	26/10/2025	9:30	26/10/2025 10:29	27/10/2025 2:00	107	LOA 200 / BTB 33	BNE	112		
VICTORIOUS ACE	26/10/2025	12:00	26/10/2025 14:11	27/10/2025 23:15	106	LOA 200 / BTB 23	MEL	416		
HOEGH MOONLIGHT	28/10/2025	20:00	28/10/2025 20:58	29/10/2025 14:00	107	LOA 200 / BTB 29	MEL	620		
MORNING CATHERINE - WWL	30/10/2025	3:50	30/10/2025 5:08	30/10/2025 15:57	107	LOA 200 / BTB 26	MEL	587		
CRUX LEADER	30/10/2025	19:00	30/10/2025 20:14	1/11/2025 15:56	106	LOA 200 / BTB 18	YOK	1848		DIRECT CALL- INSPECTION REQUIRED. BMSB FOUND BUT PERMISSION GIVEN TO DISCHARGE
CHIPOLBROK STAR	31/10/2025	9:30	2/11/2025 20:05	2/11/2025 20:05	103	LOA 200 / BTB 183				10 X SLAG POTS
INSPIRATION LAKE	31/10/2025	11:00	1/11/2025 17:45	6/11/2025 22:18	106	LOA 180 / BTB 154	BNE			CHINA STEEL - 6,600T

DATE	STEVEDORE	VESSEL	VOYAGE	STARTING SHIFT	BERTH #	BERTH DELAY	LAYDOWN	MACHINERY REQUEST RECEIVED	MACHINERY REQUEST FILLED	MACHINERY ISSUES	NOTES
1/11/2025	QUBE	INSPIRATION LAKE		EVENING	106	Y	G SHED, M BLOCK, PSHED AND L BLOCK	Y	Y	N	DELAYED BERTHING DUE TO BERTH CONGESTION
1/11/2025	QUBE	GALAXY ACE		EVENING	107	N	107CON, A BLOCK, C BLOCK AND O BLOCK	Y	Y	N	
2/11/2025	QUBE	SALOME		EVENING	107	N	EBLK, GBLK, Q BLOCK AND E SHED	Y	Y	NIL	
3/11/2025	QUBE	CHIPOLBROK STAR		NIGHT	103	Y	103 STRG	Y	Y	NIL	DELAYED BERTHING DUE TO BERTH CONGESTION
3/11/2025	LINX	MORNING MENAD		EVENING	107	N	C BLOCK, Q BLOCK AND O BLOCK	Y	Y	NIL	
4/11/2025	LINX	CSAV RIO NEVADO		DAY	105	N	D BLOCK, F BLOCK AND H BLOCK	Y	Y	NIL	BERTH 105 UTILISED AS BERTH 106 AND 107 OCCUPIED.
4/11/2025	LINX	POSITIVE LEADER		EVENING	107	N	107CON, C BLOCK, O BLOCK AND ESHED	Y	Y	NIL	
5/11/2025	LINX	HYPERION LEADER		DAY	105	N	H BLOCK, N BLOCK AND GEASTORE	Y	Y	NIL	BERTH 105 UTILISED AS BERTH 106 AND 107 OCCUPIED.
5/11/2025	QUBE	AMERICAN HIGHWAY		EVENING	107	N	107STRG, C BLOCK, Q BLOCK AND O BLOCK	Y	Y	NIL	
6/11/2025	LINX	HOEGH TRAPPER		EVENING	107	N	107CON, EBLK, C BLOCK AND ESHED	Y	Y	NIL	
6/11/2025	QUBE	TRANS FUTURE 5		EVENING	105	N	F BLOCK AND H BLOCK	Y	Y	NIL	BERTH 105 UTILISED AS BERTH 106 AND 107 OCCUPIED.
6/11/2025	QUBE	XYG HONG KONG		NIGHT	106	Y	L BLOCK	Y	Y	NIL	DELAYED BERTHING DUE TO BERTH CONGESTION
10/11/2025	QUBE	SIRIUS HIGHWAY		DAY	105	Y	B BLOCK, D BLOCK, F BLOCK, R BLOCK, N BLOCK AND GEARSTORE	Y	Y	NIL	BERTH 105 UTILISED AS BERTH 106 AND 107 OCCUPIED. H BLOCK NOT UTILISED AS FULL. BERTHING DELAYED BY KLINE FOR OPERATION REASONS.
10/11/2025	QUBE	TARIFA		EVENING	107	N	EBLK, C BLOCK, Q BLOCK AND SHED	Y	Y	NIL	
11/11/2025	QUBE	GRAMOS		DAY	103	N	DIRECT TO TRUCK	Y	Y	NIL	
11/11/2025	LINX	RHEA LEADER		DAY	106	Y	D BLOCK, F BLOCK AND H BLOCK	Y	Y	NIL	BIOSECURITY INSPECTION REQUIRED - BERTHING DELAYED
12/11/2025	LINX	LAKE TRAVIS		NIGHT	107	N	EBLK, A BLOCK, C BLOCK, Q BLOCK, O BLOCK AND ESHED	Y	Y	NIL	
12/11/2025	QUBE	WISTERIA ACE		DAY	105	Y	B BLOCK, D BLOCK R BLOCK AND N BLOCK	Y	Y	NIL	BERTH 105 UTILISED AS BERTH 106 AND 107 OCCUPIED. H BLOCK NOT UTILISED AS FULL. BERTHING DELAYED DUE TO YARD CONGESTION.
13/11/2025	QUBE	SAIC ANI SINCERITY		NIGHT	107	Y	EBLK, GBLK, A BLOCK, B BLOCK, C BLOCK AND ESHED	Y	Y	NIL	B BLOCK UTILISED AS NOT ENOUGH SPACE IN C BLOCK. BERTHING DELAYED DUE TO YARD CONGESTION.
14/11/2025	QUBE	VIKING PAGLIA		EVENING	106	N	F BLOCK, H BLOCK AND N BLOCK	Y	Y	NIL	
16/11/2025	LINX	NEPTUNE BARCELONA		DAY	107	N	EBLK, C BLOCK, Q BLOCK AND ESHED	Y	Y	NIL	
17/11/2025	LINX	ALTAIR LEADER		EVENING	106	N	D BLOCK, F BLOCK, H BLOCK, PSHED AND N BLOCK	Y	Y	NIL	
19/11/2025	LINX	GRAND QUEST		EVENING	105	N	F BLOCK AND H BLOCK	Y	Y	NIL	BERTH 105 UTILISED AS BERTH 106 AND 107 OCCUPIED.
19/11/2025	QUBE	TS HONOR		EVENING	106	N	GSHED, M BLOCK, L BLOCK AND PSHED	Y	Y	NIL	
19/11/2025	QUBE	HAN JIANG KOU		EVENING	107	N	EBLK, C BLOCK AND ESHED	Y	Y	NIL	
20/11/2025	QUBE	TORTUGAS		EVENING	107	N	107CON, EBLK, GBLK, 107STRG, Q BLOCK AND ESHED	Y	Y	NIL	
21/11/2025	QUBE	ONYX ARROW		EVENING	107	N	107STRG, C BLOCK AND O BLOCK	Y	Y	NIL	
22/11/2025	QUBE	EUROPA BAY		DAY	103	N	DIRECT TO TRUCK	Y	Y	NIL	
24/11/2025	QUBE	GLOVIS CENTURY		NIGHT	107	N	107CON, EBLK, A BLOCK, O BLOCK AND ESHED	Y	Y	NIL	C BLOCK NOT UTILISED AS FULL
25/11/2025	QUBE	MORNING NINNI		DAY	107	N	EBLK, C BLOCK, D BLOCK, Q BLOCK AND O BLOCK	Y	Y	NIL	
25/11/2025	QUBE	TRANS FUTURE 7		DAY	106	N	F BLOCK, H BLOCK AND GEARSTORE	Y	Y	NIL	
25/11/2025	LINX	DIONE LEADER		EVENING	105	N	D BLOCK, F BLOCK AND N BLOCK	Y	Y	NIL	BERTH 105 UTILISED AS BERTH 106 AND 107 OCCUPIED. H BLOCK NOT UTILISED AS FULL.
26/11/2025	QUBE	PACIFICIRIS		DAY	103	N	DIRECT TO TRUCK	Y	Y	NIL	
26/11/2025	QUBE	INDUSTRIAL CONFIDENCE		DAY	106	N	B BLOCK	Y	Y	NIL	WAS ONLY ABLE TO UTILISE AREAS THAT WOULD HOLD LARGE QUANTITIES OF CARGO
26/11/2025	QUBE	JASPER ARROW		EVENING	107	N	107CON, EBLK, GBLK, C BLOCK, O BLOCK AND ESHED	Y	Y	NIL	
27/11/2025	QUBE	EUPHRATES HIGHWAY		DAY	105	N	D BLOCK, N BLOCK AND GEARSTORE	Y	Y	NIL	BERTH 105 UTILISED AS BERTH 106 AND 107 OCCUPIED. H BLOCK NOT UTILISED AS FULL.
27/11/2025	LINX	VIING PASSAMA		DAY	107	N	107STG AND A BLOCK	Y	Y	NIL	C BLOCK NOT UTILISED AS FULL
28/11/2025	QUBE	WISDOM ACE		EVENING	106	N	D BLOCK, F BLOCK, H BLOCK, R BLOCK, M BLOCK AND PSHED	Y	Y	NIL	
29/11/2025	QUBE	TYSLA		NIGHT	107	N	107CON, EBLK, GBLK, 107STG, C BLOCK AND ESHED	Y	Y	NIL	
29/11/2025	QUBE	FREEDOM ACE		EVENING	106	N	B BLOCK, D BLOCK AND L BLOCK	Y	Y	NIL	H BLOCK NOT UTILISED AS FULL.
30/11/2025	QUBE	FLAG LAMA		NIGHT	103	N	DIRECT TO TRUCK	Y	Y	NIL	

Legend - Berth # and Laydown  

 Primary  
 Secondary  
 Tertiary

	QUBE	LINX
TOTAL VESSELS FOR MONTH	29	12
GREEN BERTH	25	8
ORANGE BERTH	4	4
RED BERTH	0	0
GREEN LAYDOWN	22	11
ORANGE LAYDOWN	7	1
RED LAYDOWN	0	0

NUMBER OF BERTHING DELAYS	6	1	SEE ATTACHED SHEETS SHOWING BERTH AND CONGESTION DELAYS
NUMBER OF MACHINERY ISSUES/REQUESTS NOT MET	0	0	

VESSEL ETA'S									
NAME	ETA DATE	ETA TIME	POB	ETD	BERTH	BSD - TREATMENT	PREVIOUS PORT	VOLUME	WINDOW
CHIPOLBROK STAR	31/10/2025	9:30	2/11/2025 20:05	2/11/2025 20:05	103	LOA 200 / BTB 183			
INSPIRATION LAKE	31/10/2025	11:00	1/11/2025 17:45	6/11/2025 22:18	106	LOA 180 / BTB 154	BNE		
GALAXY ACE	1/11/2025	14:00	1/11/2025 19:14	2/11/2025 16:08	107	LOA 200 / BTB 24	MEL	1773	
SALOME	2/11/2025	11:00	2/11/2025 18:09	3/11/2025 13:47	107	LOA 265 / BTB 43	BNE	234	
MORNING MENAD - EUKOR	3/11/2025	14:38	3/11/2025 15:44	4/11/2025 21:18	107	LOA 176 / BTB 28	BNE	867	
CSAV RIO NEVADO	4/11/2025	4:53	4/11/2025 6:23	4/11/2025 20:08	105	LOA 183 / BTB 33	MEL	725	
XYG HONGKONG	4/11/2025	5:05	6/11/2025 23:50	8/11/2025 14:26	106	LOA 130 / BTB 116	LAM		
POSITIVE LEADER	4/11/2025	15:30	4/11/2025 23:40	5/11/2025 15:49	107	LOA 180 / BTB 20	BNE	746	
HYPERION LEADER	5/11/2025	12:00	5/11/2025 12:50	6/11/2025 0:59	105	LOA 190 / BTB 18	BNE	251	
AMERICAN HIGHWAY	5/11/2025	13:30	5/11/2025 20:12	6/11/2025 7:59	107	LOA 179 / BTB 16	BNE	811	
HOEGH TRAPPER	6/11/2025	17:00	6/11/2025 18:03	7/11/2025 5:06	107	LOA 200 / BTB 29	MEL	388	
TRANS FUTURE 5	6/11/2025	22:00	6/11/2025 20:49	7/11/2025 12:00	105	LOA 200 / BTB 17	BNE	1587	
SIRIUS HIGHWAY	8/11/2025	8:30	10/11/2025 4:24	11/11/2025 7:54	105	LOA 200 / BTB 23	BNE	1747	
RHEA LEADER	10/11/2025	4:27	11/11/2025 5:50	12/11/2025 16:03	106	LOA 200 / BTB 21	SIN	1223	
TARIFA - WWL	10/11/2025	18:50	10/11/2025 20:17	11/11/2025 14:27	107	LOA 200 / BTB 45	MEL	1688	
GRAMOS	11/11/2025	10:50	11/11/2025 12:21	19/11/2025 14:59	103	LOA 200 / BTB 172	TMI		
WISTERIA ACE	11/11/2025	14:00	12/11/2025 1:22	12/11/2025 19:05	105	LOA 200 / BTB 21	MEL	1457	
LAKE TRAVIS - EUKOR	11/11/2025	20:55	11/11/2025 22:30	12/11/2025 22:30	107	LOA 200 / BTB 44	BNE	1442	
SAIC ANJI SINCERITY	12/11/2025	2:30	13/11/2025 1:01	13/11/2025 23:00	107	LOA 200 / BTB 33	MEL	1573	
VIKING PAGLIA - WWL	14/11/2025	15:00	14/11/2025 16:06	15/11/2025 3:54	106	LOA 183 / BTB 32	MEL	1128	
NEPTUNE BARCELONA	16/11/2025	7:00	16/11/2025 11:17	17/11/2025 4:58	107	LOA 200 / BTB 25	MEL	1030	
ALTAIR LEADER	17/11/2025	9:30	17/11/2025 11:10	18/11/2025 16:30	107	LOA 200 / BTB 17	BNE	1183	
GRAND QUEST	19/11/2025	10:24	19/11/2025 11:35	19/11/2025 23:00	105	LOA 179 / BTB 50	MEL	726	
HAN JIANG KOU	19/11/2025	14:00	19/11/2025 17:18	20/11/2025 3:55	107	LOA 200 / BTB 47	BNE	1052	
TS HONOR	19/11/2025	19:00	19/11/2025 19:37	2/11/2025 5:43	106	LOA 182 / BTB 157	BNE		
TORTUGAS	20/11/2025	15:00	20/11/2025 16:27	21/11/2025 3:56	107	LOA 200 / BTB 41	MEL	410	
ONYX ARROW	21/11/2025	15:00	21/11/2025 14:21	22/11/2025 6:54	107	LOA 200 / BTB 45	BNE	1527	
DUGONG ACE	22/11/2025		AMMIDMITTING PK - BMSB ISSUES - CARGO COMING ON THE WISDOM ACE			LOA 200 / BTB 35	MEL	1078	
EUROPA BAY	22/11/2025		22/11/2025 10:13	23/11/2025 0:07	103				
GLOVIS CENTURY	24/11/2025	4:00	24/11/2025 5:21	24/11/2025 19:57	107	LOA 200 / BTB 37	MEL	1450	
ORCHID ACE	24/11/2025	18:00	1/12/2025 7:09	3/12/2025 19:45	105	LOA 200 / BTB 21	YOK	1317	
MORNING NINNI - WWL	25/11/2025	7:30	25/11/2025 11:33	26/11/2025 7:51	107	LOA 180 / BTB 18	MEL	1662	
TRANS FUTURE 7	25/11/2025	8:30	25/11/2025 9:48	25/11/2025 22:02	106	LOA 200 / BTB 17	BNE	1524	
DIONE LEADER	25/11/2025	18:30	25/11/2025 19:40	26/11/2025 20:00	105	LOA 200 / BTB 21		685	
INDUSTRIAL CONFIDENCE	25/11/2025	22:00	26/11/2025 7:00	28/11/2025 11:45	106	LOA 100 / BTB 85	GEX		
PACIFIC IRIS	26/11/2025	3:30	26/11/2025 5:25	29/11/2025 15:01	103	LOA 229 / BTB 193	26/11-30/11/25 (10)		
JASPER ARROW	26/11/2025	11:00	26/11/2025 11:46	27/11/2025 3:20	107	LOA 200 / BTB 45	ADL	534	
EUPHRATES HIGHWAY	26/11/2025	20:00	26/11/2025 21:59	29/11/2025 17:55	105	LOA 200 / BTB 24	YOK	441	
VIKING PASSAMA - EUKOR	27/11/2025	7:43	27/11/2025 9:20	28/11/2025 5:05	107	LOA 183 / BTB 32	MEL	1001	
WISDOM ACE	28/11/2025	12:00	28/11/2025 13:11	29/11/2025 12:13	106	LOA 200 / BTB 24	MEL	1692	
TYSLA	28/11/2025	18:00	28/11/2025 20:30	29/11/2025 19:58	107	LOA 265 / BTB 43	BNE	186	
FREEDOM ACE	29/11/2025	15:00	29/11/2025 14:24	30/11/2025 10:50	106	LOA 200 / BTB 20	MEL	1449	
FLAG LAMA	29/11/2025	22:00	29/11/2025 22:43	2/12/2025 21:55	103	LOA 229 / BTB 197			

10 X SLAG POTS  
CHINA STEEL - 6,600T

GLASS - CONTAINERS

VESSEL WILL BERTH 10/11/25  
DIRECT CALL - INSPECTION REQUIRED

CLINKER  
DELAYED BERTHING DUE TO YARD CONGESTION

CHINA STEEL

LAY UP ONLY

DIRECT CALL - REQUIRES FOGGING AND  
INSPECTION - ELECTED NOT TO PICK UP LABOUR  
FOR 27/11/25

SNOWY HYDRO - PIPES - DETAINED BY AMSA  
WHEAT - 60,000T

DIRECT CALL - TREATMENT AND INSPECTION  
REQUIRED - ELECTED TO PICK UP LABOUR FOR  
2100HRS 27/11/25

LAY UP ONLY

DATE	STEVEDORE	VESSEL	VOYAGE	STARTING SHIFT	BERTH #	BERTH DELAY	LAYDOWN	MACHINERY REQUEST RECEIVED	MACHINERY REQUEST FILLED	MACHINERY ISSUES	NOTES
1/12/2025	QUBE	BLUE RIDGE HIGHWAY		DAY	107	N	107STR, A BLOCK, C BLOCK, Q BLOCK, O BLOCK AND ESHED	Y	Y	NIL	
1/12/2025	QUBE	ORCHID ACE		DAY	105	N	D BLOCK, F BLOCK, H BLOCK AND N BLOCK	Y	Y	NIL	BERTH 105 UTILISED AS BERTH 106 AND 107 OCCUPIED.
2/12/2025	QUBE	TIRANNA		EVENING	107	N	107CON, EBLK,GBLK, C BLOCK AND GSHED	Y	Y	NIL	
3/12/2025	QUBE	TRANSLEADER		DAY	107	N	GBLK, Q BLOCK AND ESHED	Y	Y	NIL	
3/12/2025	QUBE	FANOULA		DAY	106	N	B BLOCK	Y	Y	NIL	WAS ONLY ABLE TO UTILISE AREAS THAT WOULD HOLD LARGE QUANTITIES OF CARGO
5/12/2025	LINX	HOEGH DETROIT		DAY	107	N	107CON, EBLK, C BLOCK AND ESHED	Y	Y	NIL	
5/12/2025	QUBE	EUROPEAN HIGHWAY		DAY	105	N	D BLOCK, F BLOCK, H BLOCK AND N BLOCK	Y	Y	NIL	BERTH 105 UTILISED AS BERTH 106 AND 107 OCCUPIED.
6/12/2025	QUBE	NEW CENTURY 1		NIGHT	105	N	D BLOCK	Y	Y	NIL	BERTH 105 UTILISED AS BERTH 106 AND 107 OCCUPIED. H BLOCK NOT UTILISED AS NOT ENOUGH SPACE
7/12/2025	LINX	HOEGH BOREALIS		EVENING	107	N	107STR, A BLOCK, C BLOCK, O BLOCK AND ESHED	Y	Y	NIL	
7/12/2025	LINX	CSAV RIO NEVADO		EVENING	106	N	H BLOCK	Y	Y	NIL	
8/12/2025	LINX	CANOPUS LEADER		DAY	107	N	A BLOCK, Q BLOCK AND O BLOCK	Y	Y	NIL	C BLOCK NOT UTILISED AS FULL
9/12/2025	QUBE	MORNING CROWN		DAY	106	N	H BLOCK, F BLOCK, D BLOCK, R BLOCK AND N BLOCK	Y	Y	NIL	
10/12/2025	LINX	LORD VISHNU		DAY	106	Y	B BLOCK AND D BLOCK	Y	Y	NIL	H BLOCK NOT UTILISED DUE TO BEING FULL. BERTHED DELAYED DUE TO BIOSECURITY INSPECTION REQUIRED.
11/12/2025	QUBE	MORNING CELINE		DAY	107	N	EBLK, A BLOCK, C BLOCK, Q BLOCK, O BLOCK AND ESHED	Y	Y	NIL	
12/12/2025	LINX	METIS LEADER		EVENING	107	N	EBLK, A BLOCK, C BLOCK AND ESHED	Y	Y	NIL	
13/12/2025	QUBE	ATALANTA		DAY	103	N	DIRECT TO TRUCK	Y	Y	NIL	
15/12/2025	LINX	DEMETER LEADER		DAY	107	N	107STR, A BLOCK AND O BLOCK	Y	Y	NIL	C BLOCK NOT UTILISED AS FULL
16/12/2025	QUBE	AFRICAN FINCH		DAY	106	N	DIRECT TO TRUCK	Y	Y	NIL	
16/12/2025	QUBE	WESTERN HIGHWAY		EVENING	107	N	EBLK, C BLOK, Q BLOCK AND ESHED	Y	Y	NIL	
17/12/2025	LINX	RHEA LEADER		DAY	106	N	H BLOCK	Y	Y	NIL	
17/12/2025	QUBE	AMERICAN HIGHWAY		EVENING	107	N	EBLK, C BLOCK, Q BLOCK, O BLOCK AND ESHED	Y	Y	NIL	
17/12/2025	QUBE	TRANS FUTURE 5		EVENING	105	N	F BLOCK, H BLOCK, N BLOCK AND GEARSTORE	Y	Y	NIL	BERTH 105 UTILISED AS BERTH 106 AND 107 OCCUPIED.
18/12/2025	QUBE	SWALLOW ACE		DAY	106	N	D BLOCK, F BLOCK, L BLOCK AND M BLOCK	Y	Y	NIL	H BLOCK NOT UTILISED DUE TO BEING FULL
19/12/2025	QUBE	HORISON RAY		DAY	107	N	A BLOCK, C BLOCK AND O BLOCK	Y	Y	NIL	
20/12/2025	QUBE	TALIA		DAY	107	N	EBLK, 107STG, Q BLOCK, O BLOCK, ESHED AND GSHED	Y	Y	NIL	
20/12/2025	QUBE	BBC NYHAVN		DAY	106	N	L BLOCK	Y	Y	NIL	
20/12/2025	QUBE	EUPHONY ACE		DAY	105	N	D BLOCK, F BLOCK, H BLOCK, R BLOCK, N BLOCK AND GEARSTORE	Y	Y	NIL	BERTH 105 UTILISED AS BERTH 106 AND 107 OCCUPIED.
21/12/2025	QUBE	COSOC TENGFEI		NIGHT	106	N	D BLOCK, M BLOCK AND PSHEd	Y	Y	NIL	H BLOCK NOT UTILISED DUE TO BEING FULL
21/12/2025	LINX	MORNING MARGARETA		DAY	107	N	GBLK, A BLOCK, B BLOCK, O BLOCK AND ESHED	Y	Y	NIL	C BLOCK NOT UTILISED AS FULL
22/12/2025	QUBE	TOLEDA		EVENING	107	N	EBLK, GBLK,C BLOCK, D BLOCK, O BLOCK AND ESHED	Y	Y	NIL	D BLOCK UTILISED AS NOT ENOUGH SPACE IN C BLOCK
23/12/2025	QUBE	GLORIA DEL MARE		EVENING	103	N	DIRECT TO TRUCK	Y	Y	NIL	
23/12/2025	QUBE	PROMINENT ACE		EVENING	107	N	EBLK, C BLOCK AND ESHED	Y	Y	NIL	
24/12/2025	QUBE	GRAND VEGA		DAY	105	N	F BLOCK, H BLOCK, N BLOCK AND GEARSTORE	Y	Y	NIL	BERTH 105 UTILISED AS BERTH 106 AND 107 OCCUPIED.
26/12/2025	N/A	PETER FABER		LAY UP ONLY	103	N	LAY UP ONLY	Y	Y	NIL	
26/12/2025	QUBE	EASTERN HIGHWAY		DAY	105	N	D BLOCK, F BLOCK, H BLOCK AND N BLOCK	Y	Y	NIL	BERTH 105 UTILISED AS BERTH 106 AND 107 OCCUPIED.
26/12/2025	QUBE	AAL BRISBANE		DAY	106	Y	L BLOCK	Y	Y	NIL	ENGINE ISUES DELAYED AND WONT BERTH UNTIL 1800HRS 25/12/25
26/12/2025	LINX	HOEGH TARGET		DAY	107	N	EBLK, GBLK, 107STR, A BLOCK, C BLOCK, Q BLOCK AND ESHED	Y	Y	NIL	
28/12/2025	QUBE	FPMC B 201		EVENING	106	N	LOAD ONLY	Y	Y	NIL	
28/12/2025	QUBE	TALISMAN		EVENING	107	N	EBLK, 107CON, LINKSPAN, A BLOCK AND GSHED	Y	Y	NIL	C BLOCK NOT UTILISED AS FULL
29/12/2025	QUBE	DUGONG ACE		DAY	105	N	D BLOCK AND N BLOCK	Y	Y	NIL	BERTH 105 UTILISED AS BERTH 106 AND 107 OCCUPIED. H BLOCK NOT UTILISED DUE TO BEING FULL
30/12/2025	LINX	MORNING MENAD		DAY	107	N	107CON, EBLK, C BLOCK, Q BLOCK, O BLOCK AND GSHED	Y	Y	NIL	
30/12/2025	QUBE	VIKING PASSAMA		EVENING	106	N	F BLOCK, H BLOCK, M BLOCK AND PSHEd	Y	Y	NIL	
31/12/2025	LINX	HOEGH LONDON		NIGHT	107	N	107CON, EBLK,GBLK, C BLOCK, Q BLOCK, O BLOCK AND ESHED	Y	Y	NIL	

Legend - Berth # and Laydown  
 Primary  
 Secondary  
 Tertiary

TOTAL VESSELS FOR MONTH	QUBE	LINX
GREEN BERTH	22	12
ORANGE BERTH	8	0
RED BERTH	0	0
GREEN LAYDOWN	24	8
ORANGE LAYDOWN	6	4
RED LAYDOWN	0	0

NUMBER OF BERTHING DELAYS	1	1	SEE ATTACHED SHEETS SHOWING BERTH AND CONGESTION DELAYS
NUMBER OF MACHINERY ISSUES/REQUESTS NOT MET	0	0	

VESSEL ETA'S									
NAME	ETA DATE	ETA TIME	POB	ETD	BERTH	BSD - TREATMENT	PREVIOUS PORT	VOLUME	WINDOW
BLUE RIDGE HIGHWAY	30/11/2025	20:30	30/11/2025 23:07	1/12/2025 21:04	107	LOA 180 / BTB 22	BNE	951	
TIRRANNA	2/12/2025	13:00	2/12/2025 15:35	3/12/2025 8:00	107	LOA 237 / BTB 49	BNE	279	
TRANS LEADER - COSCO	3/12/2025	9:00	3/12/2025 11:00	3/12/2025 21:05	107	LOA 180 / BTB 20	BNE	486	
FANOULA	3/12/2025	8:00	3/12/2025 13:16	5/12/2025 22:25	106	LOA 180 / BTB 150	BNE		SNOWY HYDRO
EUROPEAN HIGHWAY	5/12/2025	5:00	5/12/2025 4:48	5/12/2025 17:54	105	LOA 180 / BTB 22	BNE	1455	
HOEGH DETROIT	5/12/2025	6:00	5/12/2025 11:41	5/12/2025 23:52	107	LOA 229 / BTB 44	MEL	651	
NEW CENTURY 1	5/12/2025	8:30	5/12/2025 19:56	6/12/2025 6:52	105	LOA 200 / BTB 26	BNE	578	
CSAV RIO NEVADO	7/12/2025	5:48	7/12/2025 7:15	7/12/2025 17:54	107	LOA 183 / BTB 33	MEL	760	
CANOPUS LEADER	8/12/2025	11:30	8/12/2025 13:16	9/12/2025 8:58	107		BNE	1330	
MORNING CROWN	9/12/2025	10:00	9/12/2025 11:15	9/12/2025 22:04	106	LOA 200 / BTB 45	BNE	1093	
HOEGH BOREALIS	9/12/2025	16:00	9/12/2025 15:37	10/12/2025 10:58	107	LOA 200 / BTB 29	MEL	941	
LORD VISHNU	9/12/2025	0:06	10/12/2025 2:25	11/12/2025 18:50	106	LOA 180 / BTB 18	LCH	1371	DIRECT CALL - OK TO DISCHARGE
MORNING CELINE	11/12/2025	11:00	11/12/2025 11:01	12/12/2025 2:00	107	LOA 200 / BTB 26	BNE	1317	
METIS LEADER	13/12/2025	1:00	13/12/2025 2:15	13/12/2025 20:53	107	LOA 200 / BTB 24	BNE	768	
ATALANTA	13/12/2025	1:00	13/12/2025 5:14	15/12/2025 9:43	103	LOA 200 / BTB 172	11/12-12/12/25 (10)		22,000T FAB BEANS
DEMETER LEADER	15/12/2025	7:00	15/12/2025 9:08	16/12/2025 7:44	107	LOA 200 / BTB 26	BNE	1497	
AFRICAN FINCH	15/12/2025	18:12	16/12/2025 7:04	21/12/2025 20:38	103	LOA 180 / BTB 154	19/12-22/12/25 (10)		35,000T WHEAT - FAILED INSPECTION - WILL CLEAN WHILST ALONGSIDE
WESTERN HIGHWAY	16/12/2025	17:15	16/12/2025 15:59	17/12/2025 3:00	107	LOA 188 / BTB 16	MEL	515	
RHEA LEADER	17/12/2025	3:45	17/12/2025 4:52	17/12/2025 16:10	106	LOA 200 / BTB 21	BNE	482	
TRANS FUTURE 5	17/12/2025	17:00	17/12/2025 18:20	18/12/2025 5:45	105	LOA 200 / BTB 17	BNE	961	
AMERICAN HIGHWAY	17/12/2025	19:00	17/12/2025 23:01	18/12/2025 9:10	107	LOA 179 / BTB 16	BNE	780	
SWALLOW ACE	18/12/2025	7:45	18/12/2025 7:45	19/12/2025 1:00	106	LOA 200 / BTB 23	MEL	1141	
HORIZON RAY	18/12/2025	12:00	19/12/2025 5:10	19/12/2025 21:58	107	LOA 200 / BTB 28	MEL	1700	
EUPHONY ACE	20/12/2025	5:00	20/12/2025 5:04	20/12/2025 19:39	105	LOA 200 / BTB 23	MEL	918	
BBC NYHAVN	20/12/2025	9:00	20/12/2025 14:31	21/12/2025 3:16	106	LOA 132 / BTB 120			LOADING 204T STEEL PLATE
TALIA	20/12/2025	9:00	20/12/2025 10:07	20/12/2025 22:40	107	LOA 200 / BTB 45	MEL	643	
COSCO TENGFEI	20/12/2025	15:35	21/12/2025 5:05	21/12/2025 16:15	106	LOA 183 / BTB 23	BNE	484	
MORNING MARGARETA - EUKOR	21/12/2025	9:00	21/12/2025 5:05	22/12/2025 7:00	107	LOA 180 / BTB 18	BNE	1205	
TOLEDO	22/12/2025	13:00	22/12/2025 14:05	23/12/2025 4:00	107	LOA 200 / BTB 41	MEL	661	
GLORIA DEL MARE	23/12/2025	20:00	23/12/2025 21:05	24/12/2025 10:02	103	LOA 200 / BTB 177			10,000T CHICK PEA
PROMINENT ACE	23/12/2025	22:00	23/12/2025 22:53	24/12/2025 13:51	107	LOA 200 / BTB 32	MEL	260	
GRAND VEGA - KLINE	24/12/2025	1:30	24/12/2025 2:23	24/12/2025 15:50	105	LOA 200 / BTB 25	MEL	892	
AAL BRISBANE	24/12/2025	2:25	26/12/2025 2:58	27/12/2025 4:00	106	LOA 194 / BTB 180	NTL		PIPES - ENGINE ISSUES DELAYED AND WONT BERTH UNTIL 1800HRS 25/12/25 (OWNERS DECISION)
PETER FABER	25/12/2025	9:00	25/12/2025 15:19	28/12/2025 20:07	103	LOA 78 / BTB 38	LAE		LAY UP ONLY
EASTERN HIGHWAY	25/12/2025	23:00	26/12/2025 4:33	26/12/2025 14:57	105	LOA 188 / BTB 16	BNE	578	
HOEGH TARGET	26/12/2025	2:00	26/12/2025 6:40	27/12/2025 0:12	107	LOA 200 / BTB 29	MEL	1027	
FPMC B 201	28/12/2025	12:28	28/12/2025 13:30	30/12/2025 1:03	106	LOA 178 / BTB 152			LOADING 4.500T ZINC
TALISMAN	28/12/2025	14:00	28/12/2025 10:48	29/12/2025 7:00	107	LOA 241 / BTB 81	BNE	136	
DUGONG ACE	29/12/2025	AM	29/12/2025 6:00	29/12/2025 16:00	105	LOA 200 / BTB 35	MEL	656	
MORNING MENAD - EUKOR	30/12/2025	3:50	30/12/2025 5:14	30/12/2025 19:50	107	LOA 176 / BTB 28	MEL	802	
VIKING PASSAMA	30/12/2025	15:00	30/12/2025 16:12	31/12/2025 0:59	106	LOA 183 / BTB 32	BNE	643	
HOEGH LONDON	30/12/2025	16:00	30/12/2025 22:25	31/12/2025 16:51	107	LOA 229 / BTB 44	MEL	623	

106 OR 105

15M MARK 107

Attachment A

## **KPI 6**

Allocation of first point of rest

Appleton Dock

Jul 1 – Dec 31, 2025

NUMBER	ETA	STEVEDORE	VESSEL	VOYAGE	STARTING SHIFT	BERTH #	BERTH DELAY	LAYDOWN	MACHINERY REQUEST RECEIVED	MACHINERY REQUEST FILLED	MACHINERY ISSUES	NOTES	
1	2/07/2025	QUBE	BBC MONTE BLANC	9100	NIGHT	E	N	E YARD, E SHED	N/A	N/A	N	35 BBLK UNITS	
2	1/07/2025	QUBE	AMBER STAR	2502	EVE	C	N	C PAD, A SHED	N/A	N/A	N	3700T STEEL CARGOES	
3	8/07/2025	QUBE	AAL HONG KONG	25005A	EVE	B	N	D SHED, A SHED, B PAD, A YARD	N/A	N/A	N	111 BBLK UNITS, 2300T STEEL CARGOES, 8 CONTAINERS	
4	15/07/2025	QUBE	AAL BANGKOK	25006	DAY	C	N	A YARD	N/A	N/A	N	63 BBLK UNITS	
5	15/07/2025	QUBE	YANGTZE HAPPINESS	2504	EVE	B	N	A YARD, B PAD	N/A	N/A	N	222 BBLK UNITS	
6	20/07/2025	QUBE	FLORAGRACHT	2506A	NIGHT	C	N	A YARD	N/A	N/A	N	2500T STEEL CARGOES	
7	19/07/2025	QUBE	NEPTUNE	0525	DAY	B	N	B PAD	N/A	N/A	N	10500T PALM KERNEL	
8	24/07/2025	QUBE	PLOVER ARROW	2504	NIGHT	C	N	C PAD, A SHED, D SHED	N/A	N/A	N	12200T STEEL CARGOES	
9	28/07/2025	QUBE	YANGTZE FLOURISH	2506	EVE	C	N	B PAD, A YARD, D SHED	N/A	N/A	N	1000T STEEL CARGOES, 25 CONTAINERS	
										QUBE	LINX		
										TOTAL VESSELS FOR MONTH	9	0	
										NUMBER OF BERTHING DELAYS	0	0	
										NUMBER OF MACHINERY ISSUES/REQUESTS NOT MET	0	0	

NUMBER	ETA	STEVEDORE	VESSEL	VOYAGE	STARTING SHIFT	BERTH #	BERTH DELAY	LAYDOWN	MACHINERY REQUEST RECEIVED	MACHINERY REQUEST FILLED	MACHINERY ISSUES	NOTES
1	1/08/2025	QUBE	AAL SHANGHAI	25006	DAY	B	N	B PAD, A YARD, D SHED	N/A	N/A	N	185 BBLK UNITS, 1000T STEEL CARGOES
2	11/08/2025	QUBE	KAIFONG	2504	EVE	C	N	C PAD, A SHED, D SHED	N/A	N/A	N	9800T STEEL CARGOES
3	16/08/2025	QUBE	GREAT COSMOS	25031	DAY	B	N	A YARD	N/A	N/A	N	2200T STEEL CARGOES
4	22/08/2025	QUBE	AAL DALIAN	25004	EVE	C	N	F YARD, E YARD	N/A	N/A	N	67 BBLK UNITS, 5 CONTAINERS
										<b>QUBE</b>	<b>LINX</b>	
<b>TOTAL VESSELS FOR MONTH</b>										4	0	
<b>NUMBER OF BERTHING DELAYS</b>										0	0	
<b>NUMBER OF MACHINERY ISSUES/REQUESTS NOT MET</b>										0	0	

NUMBER	ETA	STEVEDORE	VESSEL	VOYAGE	STARTING SHIFT	BERTH #	BERTH DELAY	LAYDOWN	MACHINERY REQUEST RECEIVED	MACHINERY REQUEST FILLED	MACHINERY ISSUES	NOTES
1	4/09/2025	QUBE	JNS QILIN	2501	DAY	B	N	B PAD, C PAD	N/A	N/A	N	3200T STEEL CARGOES
2	8/09/2025	QUBE	PENGUIN ARROW	2505	EVE	D	N	C PAD, D SHED, E SHED	N/A	N/A	N	12000T STEEL CARGOES
3	17/09/2025	QUBE	GREBE ARROW	2505	NIGHT	D	N	C PAD, D SHED, E SHED, F YARD	N/A	N/A	N	9500T STEEL CARGOES
4	24/09/2025	QUBE	AAL HONG KONG	25007	DAY	C	N	B PAD, C PAD, A YARD	N/A	N/A	N	2300T STEEL CARGOES
5	22/09/2025	QUBE	YASA MIMOSA	2504	NIGHT	D	N	C PAD, D SHED, E SHED, E YARD	N/A	N/A	N	7400T STEEL CARGOES
6	27/09/2025	QUBE	JNS HARMONY	2508	NIGHT	B	N	A YARD	N/A	N/A	N	800 CONTAINERS
										QUBE	LINX	
<b>TOTAL VESSELS FOR MONTH</b>										6	0	
<b>NUMBER OF BERTHING DELAYS</b>										0	0	
<b>NUMBER OF MACHINERY ISSUES/REQUESTS NOT MET</b>										0	0	

NUMBER	ETA	STEVEDORE	VESSEL	VOYAGE	STARTING SHIFT	BERTH #	BERTH DELAY	LAYDOWN	MACHINERY REQUEST RECEIVED	MACHINERY REQUEST FILLED	MACHINERY ISSUES	NOTES
1	2/10/2025	QUBE	AAL SHANGHAI	25008	EVE	C	N	C PAD, A YARD, D SHED	N/A	N/A	N	2402T GENERAL CARGO
2	13/10/2025	QUBE	STELLINA	3	EVE	C	N	C PAD	N/A	N/A	N	2300T STEEL CARGO
3	15/10/2025	QUBE	AAL DAMPIER	25006	DAY	C	N	C PAD, A YARD, D SHED	N/A	N/A	N	1400T GENERAL CARGO, 7 CONTAINERS
4	18/10/2025	QUBE	KITE ARROW	2506	EVE	D	N	C PAD, D SHED	N/A	N/A	N	13500T STEEL CARGO
										<b>QUBE</b>	<b>LINX</b>	
<i>TOTAL VESSELS FOR MONTH</i>										4	0	
<i>NUMBER OF BERTHING DELAYS</i>										0	0	
<i>NUMBER OF MACHINERY ISSUES/REQUESTS NOT MET</i>										0	0	

NUMBER	ETA	STEVEDORE	VESSEL	VOYAGE	STARTING SHIFT	BERTH #	BERTH DELAY	LAYDOWN	MACHINERY REQUEST RECEIVED	MACHINERY REQUEST FILLED	MACHINERY ISSUES	NOTES
1	6/11/2025	QUBE	WM CRYSTAL	13	EVE	C	N	F YARD	N/A	N/A	N	2000T BATTERY UNITS
2	6/11/2025	QUBE	INSPIRATION LAKE	2504	NIGHT	C	N	C PAD, D SHED, E SHED, F YARD	N/A	N/A	N	13200T STEEL CARGO
3	15/11/2025	QUBE	AAL HONG KONG	25009	DAY	E	N	D SHED, E YARD, F YARD	N/A	N/A	N	111 BBLK UNITS, 150T STEEL CARGOES, 4 CONTAINERS
4	17/11/2025	QUBE	XYG HONG KONG	25001	EVE	C	N	C PAD, A YARD	N/A	N/A	N	156 CONTAINERS
5	22/11/2025	QUBE	JNS QILIN	2503	DAY	C	N	A YARD, D SHED EAVES	N/A	N/A	N	8 BBLK UNITS, 550T STEEL CARGOES, 725 CONTAINERS
6	25/11/2025	QUBE	STAR KIRKENES	2505	EVE	E	N	D SHED, E YARD, E SHED	N/A	N/A	N	10000T STEEL GARGOES
7	27/11/2025	QUBE	TS HONOUR	2501	DAY	C	N	C PAD, D SHED	N/A	N/A	N	10000T STEEL CARGOES
8	29/11/2025	QUBE	AAL SHANGHAI	2501	DAY	C	N	A YARD, D SHED, F YARD	N/A	N/A	N	23 BBLK UNITS, 2000T STEEL CARGOES, 1 CONTAINER
										QUBE	LINX	
										8	0	
										0	0	
										0	0	

NUMBER	ETA	STEVEDORE	VESSEL	VOYAGE	STARTING SHIFT	BERTH #	BERTH DELAY	LAYDOWN	MACHINERY REQUEST RECEIVED	MACHINERY REQUEST FILLED	MACHINERY ISSUES	NOTES
1	3/12/2025	QUBE	BBC VERMONT	1015086	EVE	D	N	A YARD, D SHED EAVES	N/A	N/A	N	62 BBLK UNITS
2	8/12/2025	QUBE	FLORIJNGRACHT	2508	EVE	E	N	E YARD	N/A	N/A	N	15 BBLK UNITS
3	9/12/2025	QUBE	GREAT VANGUARD	2508	DAY	C	N	A YARD	N/A	N/A	N	65 BBLK UNITS, 178 CONTAINERS
4	26/12/2025	QUBE	MERWEDEGRACHT	2510	DAY	E	N	E BERTH	N/A	N/A	N	144 BATTERY UNITS
5	26/12/2025	QUBE	YANGTZE GRACE	2510	DAY	C	N	A YARD, C PAD, D SHED	N/A	N/A	N	500T GENERAL CARGO, 258 CONTAINERS
6	28/12/2025	QUBE	MATSUMAE	10	DAY	C	N	C BERTH	N/A	N/A	N	192 BATTERY UNITS
7	28/12/2025	QUBE	AAL BRISBANE	25007	EVE	E	N	A YARD, F YARD, E SHED	N/A	N/A	N	5900T GENERAL CARGO, 20 CONTAINERS
										<b>QUBE</b>	<b>LINX</b>	
<b>TOTAL VESSELS FOR MONTH</b>										<b>7</b>	<b>0</b>	
<b>NUMBER OF BERTHING DELAYS</b>										<b>0</b>	<b>0</b>	
<b>NUMBER OF MACHINERY ISSUES/REQUESTS NOT MET</b>										<b>0</b>	<b>0</b>	

Attachment A

## **KPI 6**

Allocation of first point of rest

Webb Dock West

Jul 1 – Dec 31, 2025

NUMBER	DATE	STEVE-DORE	VESSEL	VOYAGE	STARTING SHIFT	BERTH #	BERTH DELAY	LAYDOWN	MACHINERY REQUEST RECEIVED	MACHINERY REQUEST FILLED	MACHINERY ISSUES	NOTES
1	1/07/2025 6:00	QUBE	TOSCANA	EE508	DAY	BERTH 1	NIL	E	YES	YES	NIL	
2	1/07/2025 6:00	QUBE	NEW CENTURY 1	197	DAY	BERTH 2	NIL	N	YES	YES	NIL	
3	5/07/2025 1:00	LINX	GRAND QUEST	25GQ05	DAY	BERTH 1	NIL	F	YES	YES	NIL	
4	5/07/2025 20:00	LINX	HOEGH DETROIT	124	MID	BERTH 1	NIL	H	YES	YES	NIL	
5	5/07/2025 23:00	LINX	ADRIA ACE	148	DAY	BERTH 3	NIL	Q	YES	YES	NIL	
6	6/07/2025 12:00	LINX	SWALLOW ACE	150	MID	BERTH 3	NIL	P	YES	YES	NIL	
7	6/07/2025 11:30	QUBE	TIJUCA	EF508	DAY	BERTH 1	NIL	A	YES	YES	NIL	
8	6/07/2025 16:30	QUBE	WESTERN HIGHWAY	173	DAY	BERTH 2	NIL	L	YES	YES	NIL	
9	6/07/2025 17:00	QUBE	VIKING PAGLIA	O2503	EVE	BERTH 3	NIL	O	YES	YES	NIL	
10	7/07/2025 5:00	LINX	AMETHYST ACE	124	DAY	BERTH 1	NIL	E	YES	YES	NIL	
11	7/07/2025 9:00	LINX	CANOPUS LEADER	215	DAY	BERTH 2	NIL	M	YES	YES	NIL	
12	11/07/2025 2:00	QUBE	COSCO TENGFEI	EF508	DAY	BERTH 2	NIL	I	YES	YES	NIL	
13	12/07/2025 12:00	QUBE	MORNING CORNELIA	O4504	EVE	BERTH 1	NIL	F	YES	YES	NIL	
14	13/07/2025 6:00	QUBE	TRANS FUTURE 7	160	DAY	BERTH 2	NIL	N	YES	YES	NIL	
15	13/07/2025 23:00	LINX	NEPTUNE BARCELONA	2	MID	BERTH 1	NIL	H	YES	YES	NIL	
16	15/07/2025 0:30	LINX	KARIYUSHI LEADER	84	DAY	BERTH 2	NIL	L	YES	YES	NIL	
17	15/07/2025 10:30	LINX	CEPHEUS LEADER	36	EVE	BERTH 3	NIL	R	YES	YES	NIL	
18	15/07/2025 10:30	QUBE	MORNING CHAMPION	EE509	EVE	BERTH 1	NIL	E	YES	YES	NIL	
19	15/07/2025 14:00	LINX	TOURMALINE ACE	3	DAY	BERTH 2	NIL	I	YES	YES	NIL	
20	17/07/2025 6:30	LINX	JIUYANG BLOSSOM	1	EVE	BERTH 1	NIL	A	YES	YES	NIL	
21	18/07/2025 2:00	QUBE	EASTERN HIGHWAY	73	DAY	BERTH 2	NIL	M	YES	YES	NIL	
22	18/07/2025 16:00	LINX	IRIS ACE	96	MID	BERTH 1	NIL	B	YES	YES	NIL	
23	20/07/2025 6:30	LINX	WALRUS ACE	56	EVE	BERTH 1	NIL	F	YES	YES	NIL	
24	22/07/2025 9:00	QUBE	VIKING PASSAMA	O4508	EVE	BERTH 1	NIL	E	YES	YES	NIL	
25	22/07/2025 23:00	LINX	ORCA ACE	57	DAY	BERTH 2	NIL	L	YES	YES	NIL	
26	25/07/2025 1:30	QUBE	ARABIAN SEA	O2506	DAY	BERTH 1	NIL	H	YES	YES	NIL	
27	25/07/2025 0:30	LINX	GRACIOUS ACE	108	DAY	BERTH 2	NIL	M	YES	YES	NIL	
28	25/07/2025 17:00	LINX	HOEGH BOREALIS	4	MID	BERTH 3	NIL	P	YES	YES	NIL	
29	27/07/2025 6:00	QUBE	TRANS FUTURE 5	161	DAY	BERTH 2	NIL	N	YES	YES	NIL	
30	27/07/2025 6:00	LINX	OBERON	EF509	DAY	BERTH 1	NIL	F	YES	YES	NIL	
31	28/07/2025 15:00	QUBE	PAGNA	38	EVE	BERTH 1	NIL	E	YES	YES	NIL	
32	28/07/2025 23:00	LINX	MORNING CALYPSO	O4508	MID	BERTH 2	NIL	N	YES	YES	NIL	
33	29/07/2025 8:00	LINX	HOEGH TRADER	181	EVE	BERTH 2	NIL	L	YES	YES	NIL	
34	30/07/2025 14:00	LINX	SALVIA ACE	166	MID	BERTH 1	NIL	M	YES	YES	NIL	

Legend - Berth # and Laydown

BERTH 1
BERTH 2
BERTH 3

	SUMMARY	LINX	QUBE	TOTALS	COMMENTS
	TOTAL VESSELS FOR MONTH	20	14	34	
	BERTH 1	9	7	16	
	BERTH 2	7	6	13	
	BERTH 3	4	1	5	
	NUMBER OF BERTHING DELAYS	0	0		
	NUMBER OF MACHINERY ISSUES/REQUESTS NOT MET	0	0		

AUG - WDW

NUMBER	DATE	STEVE-DORE	VESSEL	VOYAGE	STARTING SHIFT	BERTH #	BERTH DELAY	LAYDOWN	MACHINERY REQUEST RECEIVED	MACHINERY REQUEST FILLED	MACHINERY ISSUES	NOTES
1	2/08/2025 14:00	QUBE	TORINO	EE510	EVE	BERTH 2	NIL	N	YES	YES	NIL	
2	3/08/2025 7:00	QUBE	SHUN FU	3	DAY	BERTH 1	NIL	H	YES	YES	NIL	
3	5/08/2025 10:00	LINX	HOEGH SYDNEY	122	EVE	BERTH 1	NIL	E	YES	YES	NIL	
4	5/08/2025 12:00	QUBE	BLUE RIDGE HIGHWAY	169	EVE	BERTH 2	NIL	L	YES	YES	NIL	
5	7/08/2025 16:00	LINX	HERMES LEADER	76	MID	BERTH 1	NIL	F	YES	YES	NIL	
6	7/08/2025 20:00	QUBE	IVORY ARROW	164	DAY	BERTH 2	NIL	I	YES	YES	NIL	
7	8/08/2025 3:00	LINX	GLOVIS CARAVEL	44	DAY	BERTH 1	NIL	E	YES	YES	NIL	
8	9/08/2025 10:00	QUBE	MORNING NINNI	OO509	EVE	BERTH 1	NIL	F	YES	YES	NIL	
9	10/08/2025 10:42	LINX	ISTRA ACE	168	DAY	BERTH 2	NIL	M	YES	YES	NIL	
10	10/08/2025 16:45	LINX	AZUL ACE	35	DAY	BERTH 3	NIL	Q	YES	YES	NIL	
11	10/08/2025 8:57	LINX	RHEA LEADER	134	DAY	BERTH 1	NIL	A	YES	YES	NIL	
12	10/08/2025 16:45	LINX	CSAV RIO NEVADO	25RN05	DAY	BERTH 2	NIL	N	YES	YES	NIL	
13	11/08/2025 14:00	LINX	GRANDE FLORIDA	225	DAY	BERTH 3	NIL	P	YES	YES	NIL	
14	11/08/2025 21:00	QUBE	TITUS	EF510	MID	BERTH 1	NIL	E	YES	YES	NIL	
15	12/08/2025 2:00	LINX	VIKING PAGLIA	PGI008	DAY	BERTH 2	NIL	I	YES	YES	NIL	
16	12/08/2025 5:00	QUBE	TRANS FUTURE 6	160	EVE	BERTH 1	NIL	B	YES	YES	NIL	
17	13/08/2025 7:00	LINX	GRAND QUEST	25GQ06	EVE	BERTH 3	NIL	R	YES	YES	NIL	
18	16/08/2025 0:01	LINX	MARTORELL	179	DAY	BERTH 1	NIL	E	YES	YES	NIL	
19	18/08/2025 9:00	LINX	WISDOM ACE	95	DAY	BERTH 3	NIL	O	YES	YES	NIL	
20	18/08/2025 10:01	QUBE	SIERRA NEVADA HIGHWAY	179	EVE	BERTH 2	NIL	N	YES	YES	NIL	
21	19/08/2025 1:00	LINX	APHRODITE LEADER	61	DAY	BERTH 1	NIL	F	YES	YES	NIL	
22	19/08/2025 7:00	QUBE	MORNING CAROL	EE511	EVE	BERTH 2	NIL	N	YES	YES	NIL	
23	19/08/2025 8:00	QUBE	MORNING CORNELIA	OO512	DAY	BERTH 1	NIL	A	YES	YES	NIL	
24	20/08/2025 7:00	QUBE	MORNING CARA	OO513	DAY	BERTH 1	NIL	C	YES	YES	NIL	
25	23/08/2025 7:00	QUBE	TRANS FUTURE 7	161	DAY	BERTH 1	NIL	H	YES	YES	NIL	
26	24/08/2025 7:00	LINX	LORD VISHNU	91	EVE	BERTH 2	NIL	M	YES	YES	NIL	
27	25/08/2025 1:30	LINX	HOEGH TROTTER	48	DAY	BERTH 3	NIL	Q	YES	YES	NIL	
28	25/08/2025 11:00	LINX	GOLIATH LEADER	123	EVE	BERTH 1	NIL	F	YES	YES	NIL	
29	25/08/2025 16:00	QUBE	EASTERN HIGHWAY	164	MID	BERTH 2	NIL	L	YES	YES	NIL	
30	27/08/2025 12:00	LINX	HOEGH AROURA	6	EVE	BERTH 1	NIL	E	YES	YES	NIL	
31	27/08/2025 13:00	LINX	FREEDOM ACE	179	MID	BERTH 2	NIL	I	YES	YES	NIL	
32	29/08/2025 20:00	QUBE	GAN JIANG KOU	6	DAY	BERTH 3	NIL	O	YES	YES	NIL	
33	31/08/2025 14:00	QUBE	PARSIFAL	EF511	EVE	BERTH 1	NIL	E	YES	YES	NIL	

Legend - Berth # and Laydown

BERTH 1
BERTH 2
BERTH 3

SUMMARY	LINX	QUBE	TOTALS	COMMENTS
TOTAL VESSELS FOR MONTH	18	15		33
BERTH 1	8	8		16
BERTH 2	5	6		11
BERTH 3	5	1		6
NUMBER OF BERTHING DELAYS	0	0		
NUMBER OF MACHINERY ISSUES/REQUESTS NOT MET	0	0		

SEP - WDW

NUMBER	DATE	STEVE-DORE	VESSEL	VOYAGE	STARTING SHIFT	BERTH #	BERTH DELAY	LAYDOWN	REQUEST RECEIVED	REQUEST FILLED	MACHINERY ISSUES	NOTES
1	1/09/2025 23:00	QUBE	NOCC ATLANTIC	EE512	MID	BERTH 1	NIL	E	YES	YES	NIL	
2	1/09/2025 23:00	QUBE	EUPHRATES HIGHWAY	114	MID	BERTH 2	NIL	N	YES	YES	NIL	
3	2/09/2025 11:00	LINX	PRECIOUS ACE	106	EVE	BERTH 2	NIL	L	YES	YES	NIL	
4	3/09/2025 12:00	QUBE	TRANS LEADER	18	EVE	BERTH 1	NIL	H	YES	YES	NIL	
5	4/09/2025 14:00	LINX	VIKING PASSAMA	PSM009	EVE	BERTH 2	NIL	M	YES	YES	NIL	
6	5/09/2025 6:00	LINX	JUPITER SPIRIT	79	DAY	BERTH 3	NIL	O	YES	YES	NIL	
7	6/09/2025 19:30	LINX	GRAND COSMO	38	DAY	BERTH 2	NIL	I	YES	YES	NIL	
8	6/09/2025 21:00	QUBE	MORNING CHARLOTTE	OO515	DAY	BERTH 1	NIL	F	YES	YES	NIL	
9	9/09/2025 5:19	QUBE	ARC HONOR	EF512	DAY	BERTH 1	NIL	A	YES	YES	NIL	
10	13/09/2025 6:00	QUBE	TRANS FUTURE 5	162	DAY	BERTH 1	NIL	E	YES	YES	NIL	
11	13/09/2025 6:00	QUBE	HAWAIIAN HIGHWAY	83	DAY	BERTH 2	NIL	N	YES	YES	NIL	
12	13/09/2025 12:00	LINX	GRAND QUEST	25GQ07	EVE	BERTH 3	NIL	P	YES	YES	NIL	
13	15/09/2025 14:00	LINX	HYPERION LEADER	134	DAY	BERTH 1	NIL	E	YES	YES	NIL	
14	14/09/2025 23:00	LINX	VICTORY RAY	8	MID	BERTH 2	NIL	M	YES	YES	NIL	
15	15/09/2025 6:00	QUBE	VIKING PAGLIA	517	DAY	BERTH 3	NIL	Q	YES	YES	NIL	
16	15/09/2025 23:00	LINX	GLOVIS CHAMPION	2	DAY	BERTH 1	NIL	F	YES	YES	NIL	
17	16/09/2025 6:00	QUBE	BLUE RIDGE HIGHWAY	171	DAY	BERTH 2	NIL	K	YES	YES	NIL	
18	17/09/2025 23:00	LINX	DUGONG ACE	55	DAY	BERTH 1	NIL	E	YES	YES	NIL	
19	18/09/2025 12:00	LINX	GARNET ACE	106	DAY	BERTH 2	NIL	N	YES	YES	NIL	
20	18/09/2025 10:00	LINX	TRANQUIL ACE	123	EVE	BERTH 3	NIL	R	YES	YES	NIL	
21	20/09/2025 5:00	LINX	MORNING MARGARETA	32	EVE	BERTH 1	NIL	B	YES	YES	NIL	
22	21/09/2025 10:00	QUBE	BOHEME	EE513	EVE	BERTH 2	NIL	L	YES	YES	NIL	
23	22/09/2025 6:00	LINX	CSAV RIO NEVADO	25RN06	DAY	BERTH 1	NIL	H	YES	YES	NIL	
24	22/09/2025 10:00	LINX	GRANDE TEXAS	325	EVE	BERTH 3	NIL	P	YES	YES	NIL	
25	23/09/2025 19:00	LINX	HOEGH OSAKA	124	EVE	BERTH 1	NIL	E	YES	YES	NIL	
26	24/09/2025 5:00	QUBE	SIERRA NEVADA HIGHWAY	180	EVE	BERTH 3	NIL	O	YES	YES	NIL	
27	25/09/2025 23:00	LINX	THEMIS LEADER	55	MID	BERTH 2	NIL	M	YES	YES	NIL	
28	26/09/2025 6:00	LINX	WISTERIA ACE	142	DAY	BERTH 3	NIL	Q	YES	YES	NIL	
29	26/09/2025 23:00	QUBE	PAGNA	40	MID	BERTH 1	NIL	E	YES	YES	NIL	
30	27/09/2025 6:00	LINX	HOEGH TRAVELLER	52	DAY	BERTH 2	NIL	N	YES	YES	NIL	
31	27/09/2025 15:00	QUBE	TRANS FUTURE 6	161	EVE	BERTH 1	NIL	A	YES	YES	NIL	
32	29/09/2025 23:00	LINX	TARIFA	OO519	MID	BERTH 1	NIL	F	YES	YES	NIL	

**Legend - Berth # and Laydown**

BERTH 1
BERTH 2
BERTH 3

**SUMMARY**

	LINX	QUBE	TOTAL	COMMENTS
<b>TOTAL VESSELS FOR MONTH</b>	19	13	32	
BERTH 1	7	7	14	
BERTH 2	7	4	11	
BERTH 3	5	2	7	
NUMBER OF BERTHING DELAYS	0	0		
NUMBER OF MACHINERY ISSUES/REQUESTS NOT MET	0	0		

OCT - WDW

NUMBER	DATE	STEVE-DORE	VESSEL	VOYAGE	STARTING SHIFT	BERTH #	BERTH DELAY	LAYDOWN	MACHINERY REQUEST RECEIVED	MACHINERY REQUEST FILLED	MACHINERY ISSUES	NOTES
1	30/09/2025 19:00	LINX	PEGASUS ACE	326	DAY	BERTH 3	NIL	R	YES	YES	NIL	
2	1/10/2025 8:00	LINX	POSITIVE LEADER	134	DAY	BERTH 1	NIL	E	YES	YES	NIL	
3	1/10/2025 12:00	QUBE	AMERICAN HIGHWAY	225	EVE	BERTH 2	NIL	L	YES	YES	NIL	
4	2/10/2025 19:00	QUBE	ANIARA	EF513	MID	BERTH 1	NIL	H	YES	YES	NIL	
5	3/10/2025 13:00	QUBE	TONSBERG	EF514	DAY	BERTH 1	NIL	F	YES	YES	NIL	
6	4/10/2025 8:00	QUBE	GAN JIANG KOU	7	DAY	BERTH 2	NIL	N	YES	YES	NIL	
7	5/10/2025 11:00	QUBE	NABUCCO	EE514	EVE	BERTH 1	NIL	A	YES	YES	NIL	
8	6/10/2025 8:00	LINX	FREEDOM ACE	180	EVE	BERTH 2	NIL	M	YES	YES	NIL	
9	9/10/2025 8:00	QUBE	MORNING COURIER	OO520	EVE	BERTH 2	NIL	I	YES	YES	NIL	
10	9/10/2025 10:00	QUBE	ONYX ARROW	122	EVE	BERTH 3	NIL	O	YES	YES	NIL	
11	10/10/2025 21:00	QUBE	TOSCA	OO520	EVE	BERTH 1	NIL	B	YES	YES	NIL	
12	12/10/2025 6:00	QUBE	TRANS FUTURE 7	162	DAY	BERTH 3	NIL	P	YES	YES	NIL	
13	12/10/2025 23:00	QUBE	TRANS LEADER	19	DAY	BERTH 1	NIL	H	YES	YES	NIL	
14	13/10/2025 6:00	QUBE	NORTHERN HIGHWAY	159	EVE	BERTH 2	NIL	K	YES	YES	NIL	
15	14/10/2025 23:59	LINX	GRAND QUEST	25GQ08	DAY	BERTH 1	NIL	F	YES	YES	NIL	
16	15/10/2025 16:46	LINX	HOEGH AUSTRALIS	4	EVE	BERTH 2	NIL	I	YES	YES	NIL	
17	15/10/2025 14:00	QUBE	SHANGHAI HIGHWAY	183	EVE	BERTH 3	NIL	Q	YES	YES	NIL	
18	16/10/2025 1:04	LINX	ONYX ACE	112	DAY	BERTH 1	NIL	E	YES	YES	NIL	
19	17/10/2025 12:00	LINX	VIKING EMERALD	29	EVE	BERTH 1	NIL	A	YES	YES	NIL	
20	17/10/2025 13:00	LINX	ORCHID ACE	151	EVE	BERTH 2	NIL	N	YES	YES	NIL	
21	18/10/2025 8:00	QUBE	VIKING OCEAN	23	DAY	BERTH 3	NIL	R	YES	YES	NIL	
22	18/10/2025 13:00	LINX	CLOVER ACE	120	DAY	BERTH 1	NIL	B	YES	YES	NIL	
23	18/10/2025 19:30	LINX	VIKING PASSAMA	11	EVE	BERTH 3	NIL	O	YES	YES	NIL	
24	20/10/2025 6:00	QUBE	ARABIAN SEA	OO524	DAY	BERTH 2	NIL	N	YES	YES	NIL	
25	20/10/2025 9:30	LINX	PHOENIX LEADER	61	EVE	BERTH 2	NIL	L	YES	YES	NIL	
26	22/10/2025 6:30	LINX	KARIYUSHI LEADER	88	DAY	BERTH 1	NIL	H	YES	YES	NIL	
27	23/10/2025 10:30	LINX	GRACEFUL LEADER	131	EVE	BERTH 1	NIL	F	YES	YES	NIL	
28	23/10/2025 16:00	QUBE	MORNING CAROLINE	OO525	MID	BERTH 2	NIL	N	YES	YES	NIL	
29	24/10/2025 9:30	LINX	VICTORIOUS ACE	83	EVE	BERTH 1	NIL	E	YES	YES	NIL	
30	25/10/2025 22:00	QUBE	BLUE RIDGE HIGHWAY	172	DAY	BERTH 1	NIL	G	YES	YES	NIL	
31	26/10/2025 11:00	LINX	HOEGH MOONLIGHT	2	EVE	BERTH 3	NIL	Q	YES	YES	NIL	
32	26/10/2025 6:00	QUBE	NEW CENTURY 1	199	DAY	BERTH 2	NIL	N	YES	YES	NIL	
33	27/10/2025 15:00	QUBE	MORNING CATHERINE	EE515	MID	BERTH 2	NIL	M	YES	YES	NIL	
34	28/10/2025 15:00	QUBE	TONGALA	EF515	EVE	BERTH 3	NIL	P	YES	YES	NIL	
35	26/10/2025 1:00	LINX	GALAXY ACE	101	DAY	BERTH 1	NIL	E	YES	YES	NIL	

Legend - Berth # and Laydown

BERTH 1
BERTH 2
BERTH 3

SUMMARY	LINX	QUBE	TOTAL	Comments
TOTAL VESSELS FOR MONTH	16	19	35	
BERTH 1	9	6	15	
BERTH 2	4	8	12	
BERTH 3	3	5	8	
NUMBER OF BERTHING DELAYS	0	0		
NUMBER OF MACHINERY ISSUES/REQUESTS NOT MET	0	0		

NOV - WDW

NUMBER	DATE	STEVE-DORE	VESSEL	VOYAGE	STARTING SHIFT	BERTH #	BERTH DELAY	LAYDOWN	MACHINERY REQUEST RECEIVED	MACHINERY REQUEST FILLED	MACHINERY ISSUES	NOTES
1	2/11/2025 2:00	LINX	CSAV RIO NEVADO	25RN07	DAY	BERTH 1	NIL	A	YES	YES	NIL	
2	3/11/2025 6:00	LINX	CRUX LEADER	14	DAY	BERTH 1	NIL	E	YES	YES	NIL	
3	3/11/2025 23:00	LINX	HOEGH TRAPPER	52	DAY	BERTH 2	NIL	I	YES	YES	NIL	
4	4/11/2025 19:00	QUBE	SALOME	EF516	DAY	BERTH 1	NIL	H	YES	YES	NIL	
5	6/11/2025 8:45	LINX	MORNING MENAD	125	EVE	BERTH 3	NIL	R	YES	YES	NIL	
6	6/11/2025 11:00	LINX	LORD VISHNU	94	DAY	BERTH 2	NIL	N	YES	YES	NIL	
7	7/11/2025 9:00	LINX	HYPERION LEADER	135	EVE	BERTH 3	NIL	Q	YES	YES	NIL	
8	7/11/2025 15:00	LINX	POSITIVE LEADER	135	EVE	BERTH 1	NIL	F	YES	YES	NIL	
9	7/11/2025 11:00	LINX	WISTERIA ACE	143	EVE	BERTH 2	NIL	L	YES	YES	NIL	
10	7/11/2025 14:00	QUBE	TARIFA	00527	EVE	BERTH 3	NIL	P	YES	YES	NIL	
11	7/11/2025 22:00	LINX	SAIC ANJI SINCERITY	1	EVE	BERTH 1	NIL	E	YES	YES	NIL	
12	8/11/2025 16:00	QUBE	TRANS FUTURE 5	163	EVE	BERTH 1	NIL	F	YES	YES	NIL	
13	10/11/2025 5:50	QUBE	AMERICAN HIGHWAY	226	EVE	BERTH 1	NIL	A	YES	YES	NIL	
14	12/11/2025 8:00	QUBE	VIKING PAGLIA	00529	EVE	BERTH 1	NIL	B	YES	YES	NIL	
15	13/11/2025 12:00	LINX	NEPTUNE BARCELONA	4	EVE	BERTH 1	NIL	H	YES	YES	NIL	
16	13/11/2025 23:00	LINX	RHEA LEADER	136	DAY	BERTH 2	NIL	N	YES	YES	NIL	
17	14/11/2025 6:00	LINX	LAKE TRAVIS	3528	EVE	BERTH 1	NIL	I	YES	YES	NIL	
18	16/11/2025 18:00	LINX	RUBY ACE	127	EVE	BERTH 1	NIL	E	YES	YES	NIL	
19	17/11/2025 11:01	LINX	GRAND QUEST	25GQ09	EVE	BERTH 1	NIL	F	YES	YES	NIL	
20	15/11/2025 19:00	QUBE	TORTUGAS	EE516	DAY	BERTH 2	NIL	N	YES	YES	NIL	
21	15/11/2025 0:01	QUBE	JAPSER ARROW	141	EVE	BERTH 2	NIL	L	YES	YES	NIL	
22	20/11/2025 7:00	LINX	ALTAIR LEADER	100	DAY	BERTH 1	NIL	A	YES	YES	NIL	
23	17/11/2025 7:00	LINX	GLOVIS CENTURY	3	EVE	BERTH 1	NIL	F	YES	YES	NIL	
24	21/11/2025 0:30	QUBE	MORNING NINNI	00531	DAY	BERTH 1	NIL	B	YES	YES	NIL	
25	5/11/2025 23:59	LINX	DUGONG ACE	56	EVE	BERTH 3	NIL	P	YES	YES	NIL	
26	21/11/2025 10:00	QUBE	HAN JIANG KOU	5	EVE	BERTH 1	NIL	H	YES	YES	NIL	
27	22/11/2025 12:00	LINX	WISDOM ACE	98A	EVE	BERTH 2	NIL	M	YES	YES	NIL	
28	20/11/2025 10:00	LINX	FREEDOM ACE	181	DAY	BERTH 3	NIL	O	YES	YES	NIL	
29	27/11/2025 3:00	QUBE	TRANS FUTURE 7	163	DAY	BERTH 1	NIL	E	YES	YES	NIL	
30	28/11/2025 3:00	LINX	DIONE LEADER	96	EVE	BERTH 2	NIL	I	YES	YES	NIL	
31	29/11/2025 14:00	LINX	VIKING PASSAMA	003532	EVE	BERTH 1	NIL	F	YES	YES	NIL	

Legend - Berth # and Laydown

BERTH 1
BERTH 2
BERTH 3

SUMMARY	LINX	QUBE	TOTAL	Comments
TOTAL VESSELS FOR MONTH	21	10	31	
BERTH 1	11	7	18	
BERTH 2	6	2	8	
BERTH 3	4	1	5	
NUMBER OF BERTHING DELAYS	0	0	0	
NUMBER OF MACHINERY ISSUES/REQUESTS NOT MET	0	0	0	

DECEMBER - WDW

NUMBER	DATE	STEVE-DORE	VESSEL	VOYAGE	STARTING SHIFT	BERTH #	BERTH DELAY	LAYDOWN	MACHINERY REQUEST RECEIVED	MACHINERY REQUEST FILLED	MACHINERY ISSUES	NOTES
1	1/12/2025 4:30	QUBE	EUPHRATES HIGHWAY	116	DAY	BERTH 2	NIL	K	YES	YES	NIL	
2	1/12/2025 6:00	QUBE	TYSLA	EF517	DAY	BERTH 1	NIL	A	YES	YES	NIL	
3	2/12/2025 1:00	LINX	HOEGH DEROIT	126	MID	BERTH 3	NIL	O	YES	YES	NIL	
4	3/12/2025 6:00	QUBE	BLUE RIDGE HIGHWAY	173	EVE	BERTH 1	NIL	E	YES	YES	NIL	
5	4/12/2025 9:00	LINX	HOEGH BOREALIS	6	DAY	BERTH 3	NIL	Q	YES	YES	NIL	
6	5/12/2025 2:00	LINX	CSAV RIO NEVADO	25N08	DAY	BERTH 1	NIL	E	YES	YES	NIL	
7	5/12/2025 6:00	QUBE	TRANS LEADER	20	EVE	BERTH 3	NIL	R	YES	YES	NIL	
8	5/12/2025 12:00	LINX	ORCHID ACE	152	DAY	BERTH 2	NIL	L	YES	YES	NIL	
9	5/12/2025 22:00	QUBE	MORNING CROWN	OO533	MID	BERTH 1	NIL	F	YES	YES	NIL	
10	5/12/2025 2:00	QUBE	TIRRANNA	EF418	DAY	BERTH 2	NIL	J	YES	YES	NIL	
11	7/12/2025 6:00	QUBE	NEW CENTURY 1	200	DAY	BERTH 1	NIL	E	YES	YES	NIL	
12	8/12/2025 13:30	QUBE	MORNING CELINE	OO534	DAY	BERTH 1	NIL	F	YES	YES	NIL	
13	9/12/2025 14:00	LINX	AZUL ACE	38	MID	BERTH 2	NIL	L	YES	YES	NIL	
14	13/12/2025 6:00	LINX	LORD VISHNU	95	EVE	BERTH 1	NIL	H	YES	YES	NIL	
15	1/12/2025 19:00	LINX	SWALLOW ACE	153	EVE	BERTH 3	NIL	P	YES	YES	NIL	
16	13/12/2025 18:00	LINX	HORIZON RAY	2	DAY	BERTH 2	NIL	M	YES	YES	NIL	
17	15/12/2025 14:00	LINX	METIS LEADER	128	DAY	BERTH 2	NIL	K	YES	YES	NIL	
18	15/12/2025 18:30	QUBE	TALIA	EE517	DAY	BERTH 1	NIL	E	YES	YES	NIL	
19	16/12/2025 8:00	LINX	EUPHONY ACE	160	EVE	BERTH 3	NIL	R	YES	YES	NIL	
20	18/12/2025 14:00	QUBE	WESTERN HIGHWAY	177	MID	BERTH 1	NIL	A	YES	YES	NIL	
21	17/12/2025 18:00	LINX	DEMETER LEADER	42	DAY	BERTH 2	NIL	N	YES	YES	NIL	
22	18/12/2025 23:00	LINX	RHEA LEADER	137	DAY	BERTH 1	NIL	B	YES	YES	NIL	
23	19/12/2025 9:00	QUBE	TRANS FUTURE 5	164	DAY	BERTH 1	NIL	F	YES	YES	NIL	
24	19/12/2025 16:00	QUBE	AMERICAN HIGHWAY	227	MID	BERTH 3	NIL	Q	YES	YES	NIL	
25	20/12/2025 9:00	QUBE	TOLEDO	EE518	MID	BERTH 1	NIL	C	YES	YES	NIL	
26	19/12/2025 3:00	QUBE	GRAND VEGA	18	DAY	BERTH 2	NIL	N	YES	YES	NIL	
27	22/12/2025 3:00	LINX	PROMINENT ACE	180	DAY	BERTH 1	NIL	E	YES	YES	NIL	
28	23/12/2025 7:00	QUBE	COSCO TENGFEI	95	EVE	BERTH 1	NIL	F	YES	YES	NIL	
29	23/12/2025 14:00	LINX	HOEGH TARGET	60	EVE	BERTH 2	NIL	L	YES	YES	NIL	
30	23/12/2025 14:00	LINX	MORNING MARGARETA	OK535	EVE	BERTH 3	NIL	R	YES	YES	NIL	
31	26/12/2025 2:00	LINX	DUGONG ACE	57	MID	BERTH 1	NIL	H	YES	YES	NIL	
32	27/12/2025 2:00	QUBE	MORNING MENAD	O3537	EVE	BERTH 2	NIL	K	YES	YES	NIL	
33	28/12/2025 15:00	LINX	HOEGH LONDON	118	EVE	BERTH 3	NIL	P	YES	YES	NIL	
34	28/12/2025 2:00	QUBE	EASTERN HIGHWAY	167	DAY	BERTH 1	NIL	E	YES	YES	NIL	
35	30/12/2025 8:00	LINX	IRIS ACE	101	EVE	BERTH 3	NIL	Q	YES	YES	NIL	

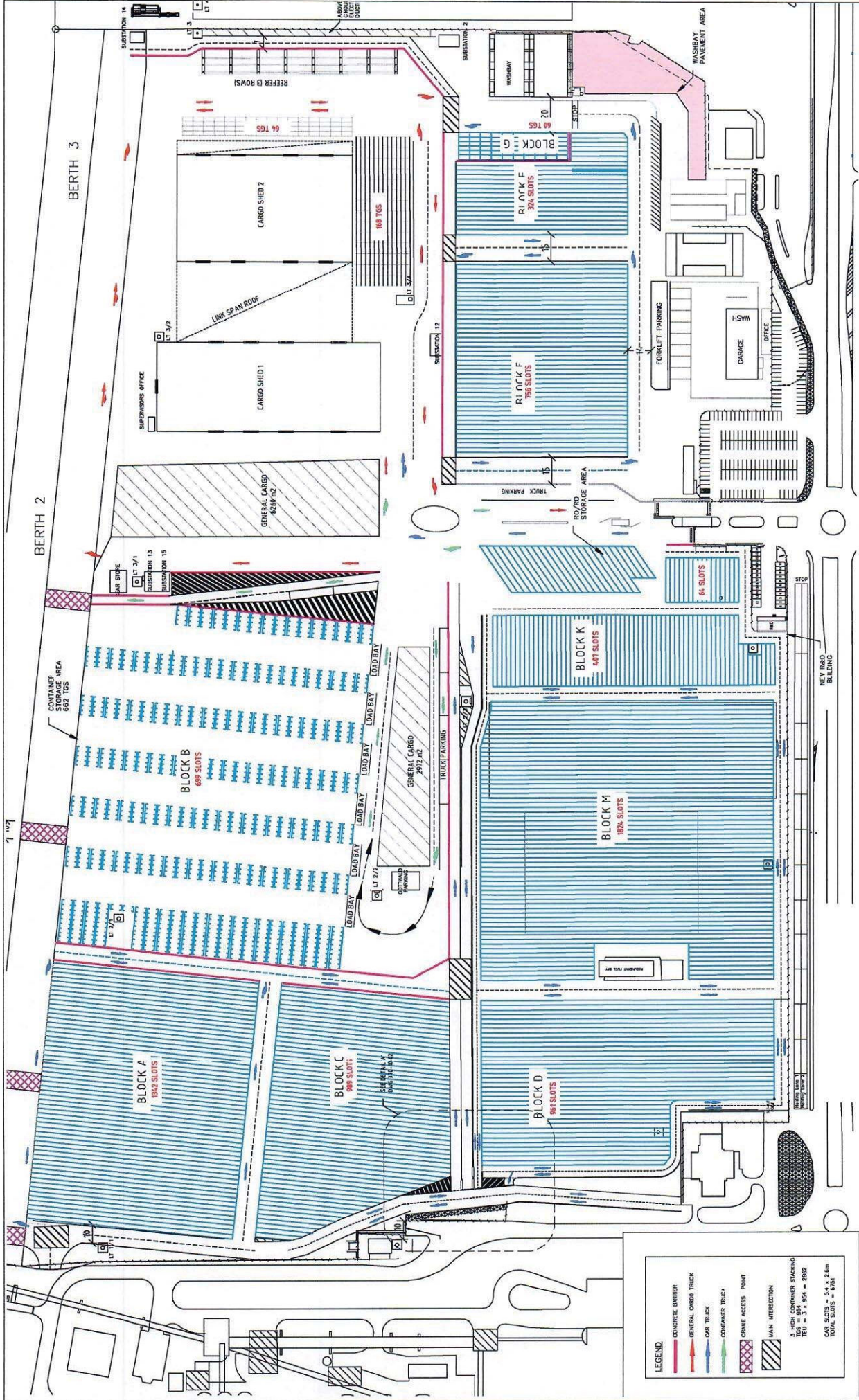
Legend - Berth # and Laydown

BERTH 1
BERTH 2
BERTH 3

TOTAL VESSELS FOR MONTH

	LINX	QUBE	TOTAL
TOTAL VESSELS FOR MONTH	18	17	35
BERTH 1	5	11	16
BERTH 2	6	4	10
BERTH 3	7	2	9
NUMBER OF BERTHING DELAYS	0	0	0
NUMBER OF MACHINERY ISSUES/REQUESTS NOT MET	0	0	0

PART B – TERMINAL LAYOUT – Fisherman Islands, Port Kembla, Appleton Dock, Webb Dock West



**Project:** AAT FISHERMAN ISLANDS TERMINAL  
**Drawing Title:** C1 - LINEMARKING WORKS  
**GENERAL ARRANGEMENT**

**Client:** James Rose Consulting  
 A/N 64 175 064 511  
 Unit F21, 1-15 Barr Street  
 BALMAIN NSW 2041  
 PH 02 9555 8588  
 FAX 02 9555 8589  
 mail@jamesrose.com.au  
 www.jamesrose.com.au

**Scale:** A3  
**Size:** 1:2000

Prepared By	Checked By	Date	Scale
PL	DM	04/05/19	1:2000
DM	DM	04/05/19	
DM	DM	04/05/19	

**REVISIONS AND ISSUES**

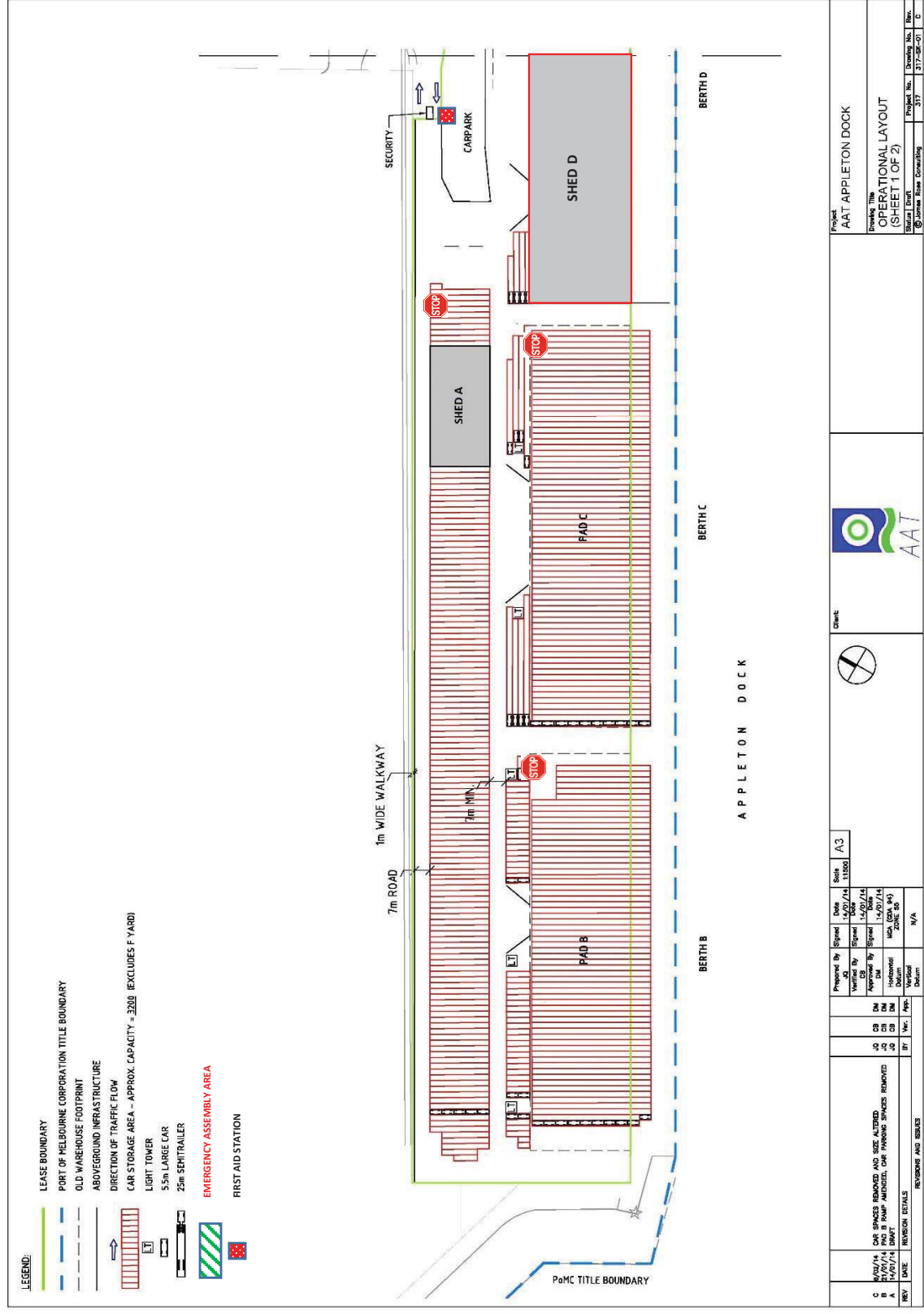
REV	DATE	BY	Ver.	App.	Desc.
B	04/05/19	DM	DM	DM	BLOCK B AMENDED
A	20/05/19	PL	DM	DM	FOR INFORMATION

**LEGEND:**  
 CONCRETE BARRIER  
 GENERAL CARGO TRUCK  
 CAR TRUCK  
 CONTAINER TRUCK  
 CRANE ACCESS POINT  
 MAIN INTERSECTION  
 3-HOUR CONTAINER STACKING  
 TCU = 3' x 5' x 2.6m = 2882  
 CAR SLOTS = 5.4 x 2.6m  
 TOTAL SLOTS = 151





# AAT APPLETON DOCK – SITE PLAN



**LEGEND:**

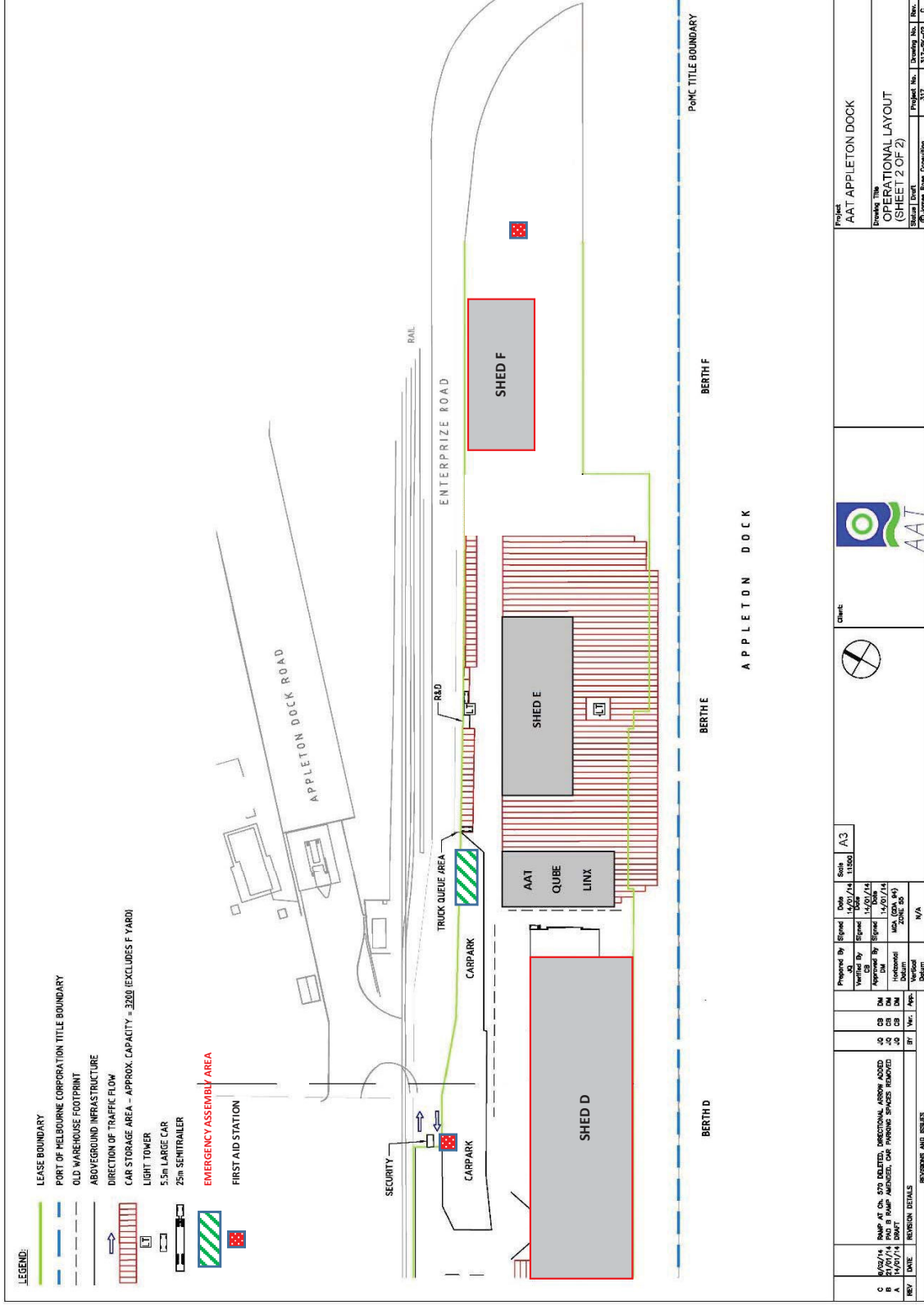
- LEASE BOUNDARY
- PORT OF MELBOURNE CORPORATION TITLE BOUNDARY
- OLD WAREHOUSE FOOTPRINT
- ABOVEGROUND INFRASTRUCTURE
- DIRECTION OF TRAFFIC FLOW
- CAR STORAGE AREA - APPROX. CAPACITY = 3200 (EXCLUDES F YARD)
- LIGHT TOWER
- 55m LARGE CAR
- 25m SEMITRAILER
- EMERGENCY ASSEMBLY AREA
- FIRST AID STATION

<b>Project</b> AAT APPLETON DOCK		<b>Client</b> 	
<b>Drawings Title</b> OPERATIONAL LAYOUT (SHEET 1 OF 2)		<b>Scale</b> 1:1000	
<b>Sheet No.</b> 317		<b>Project No.</b> 317	
<b>Drawn No.</b> 317		<b>Issue No.</b> 01	
<b>Drawn</b> [Signature]		<b>Issue</b> [Signature]	

<b>Prepared By</b> [Signature]	<b>Date</b> 11/03/14	<b>Scale</b> A3
<b>Verified By</b> [Signature]	<b>Date</b> 11/03/14	
<b>Approved By</b> [Signature]	<b>Date</b> 11/03/14	
<b>Checked By</b> [Signature]	<b>Date</b> 11/03/14	
<b>Drawn</b> [Signature]	<b>Date</b> 11/03/14	
<b>Issue</b> [Signature]	<b>Date</b> 11/03/14	

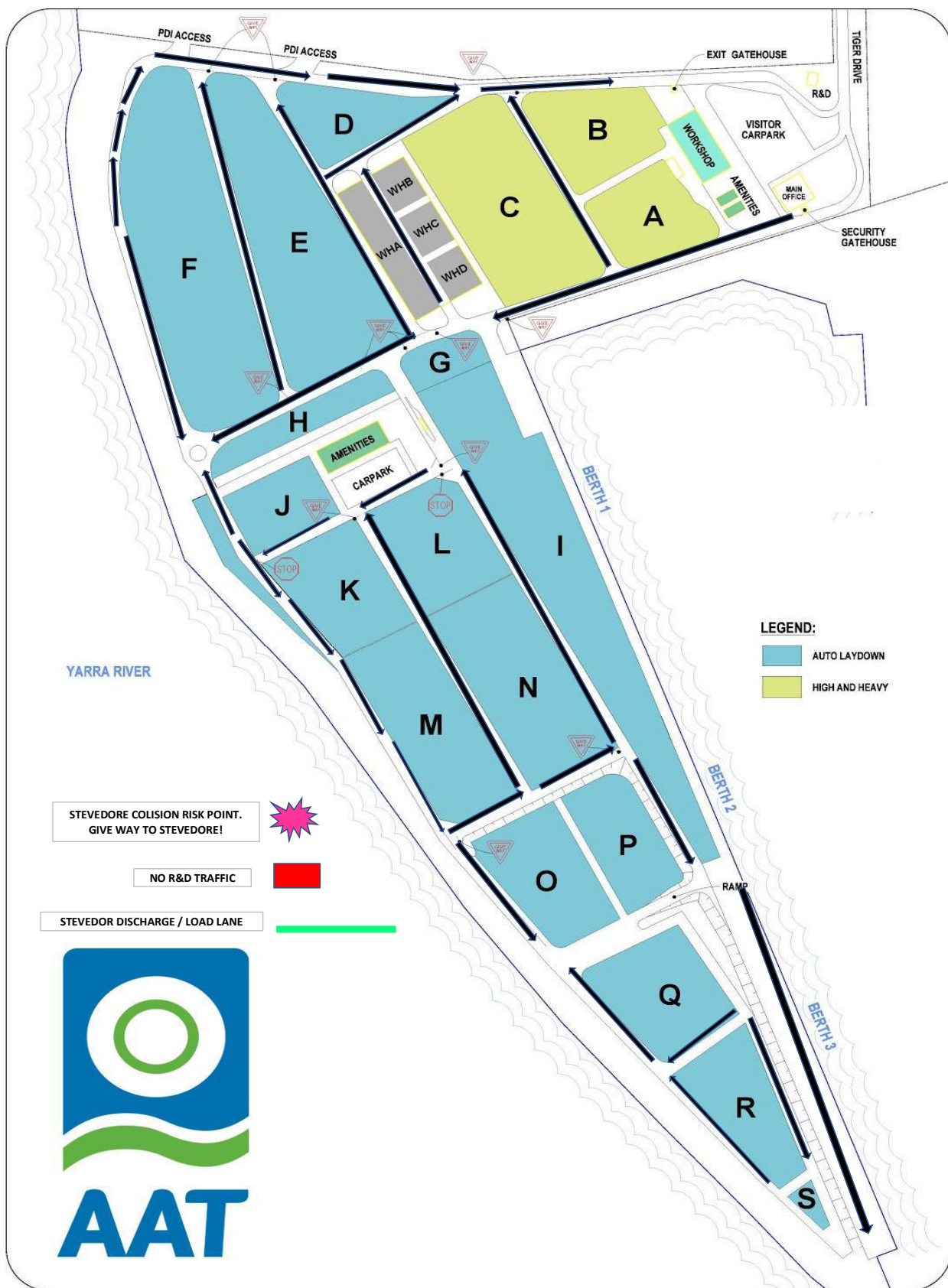
<b>REV</b> C	<b>DATE</b> 11/03/14	<b>BY</b> [Signature]	<b>DESCRIPTION</b> DIM SPACES REMOVED AND SIZE ADJUSTED
<b>REV</b> A	<b>DATE</b> 11/03/14	<b>BY</b> [Signature]	<b>DESCRIPTION</b> DIM SPACES REMOVED AND SIZE ADJUSTED

# AAT APPLETON DOCK – SITE PLAN



REV	DATE	REVISION DETAILS	BY	CHK	APP	VERIFIED BY	SIGNED	DATE	SCALE	NO.										
C	16/02/14	RAUP AS ON SITE DELIVERED, OPERATIONAL WORK BEGINS	DM	DM	DM	DM	DM	14/02/14	A3	11500										
B	15/02/14	PROF & RAUP AMENDED, CAR PARKING SPACES REMOVED	DM	DM	DM	DM	DM	14/02/14												
A	14/02/14	DRIFT	DM	DM	DM	DM	DM	14/02/14												
<table border="1"> <tr> <td>PROJECT</td> <td>AAT APPLETON DOCK</td> </tr> <tr> <td>DRAWING TITLE</td> <td>OPERATIONAL LAYOUT (SHEET 2 OF 2)</td> </tr> <tr> <td>SHEET NO.</td> <td>317</td> </tr> <tr> <td>DRAWING NO.</td> <td>317-SC-02</td> </tr> <tr> <td>REV.</td> <td>D</td> </tr> </table>											PROJECT	AAT APPLETON DOCK	DRAWING TITLE	OPERATIONAL LAYOUT (SHEET 2 OF 2)	SHEET NO.	317	DRAWING NO.	317-SC-02	REV.	D
PROJECT	AAT APPLETON DOCK																			
DRAWING TITLE	OPERATIONAL LAYOUT (SHEET 2 OF 2)																			
SHEET NO.	317																			
DRAWING NO.	317-SC-02																			
REV.	D																			

AAT Webb Dock West



**LEGEND:**  
 AUTO LAYDOWN  
 HIGH AND HEAVY

STEVEDORE COLISION RISK POINT.  
 GIVE WAY TO STEVEDORE!

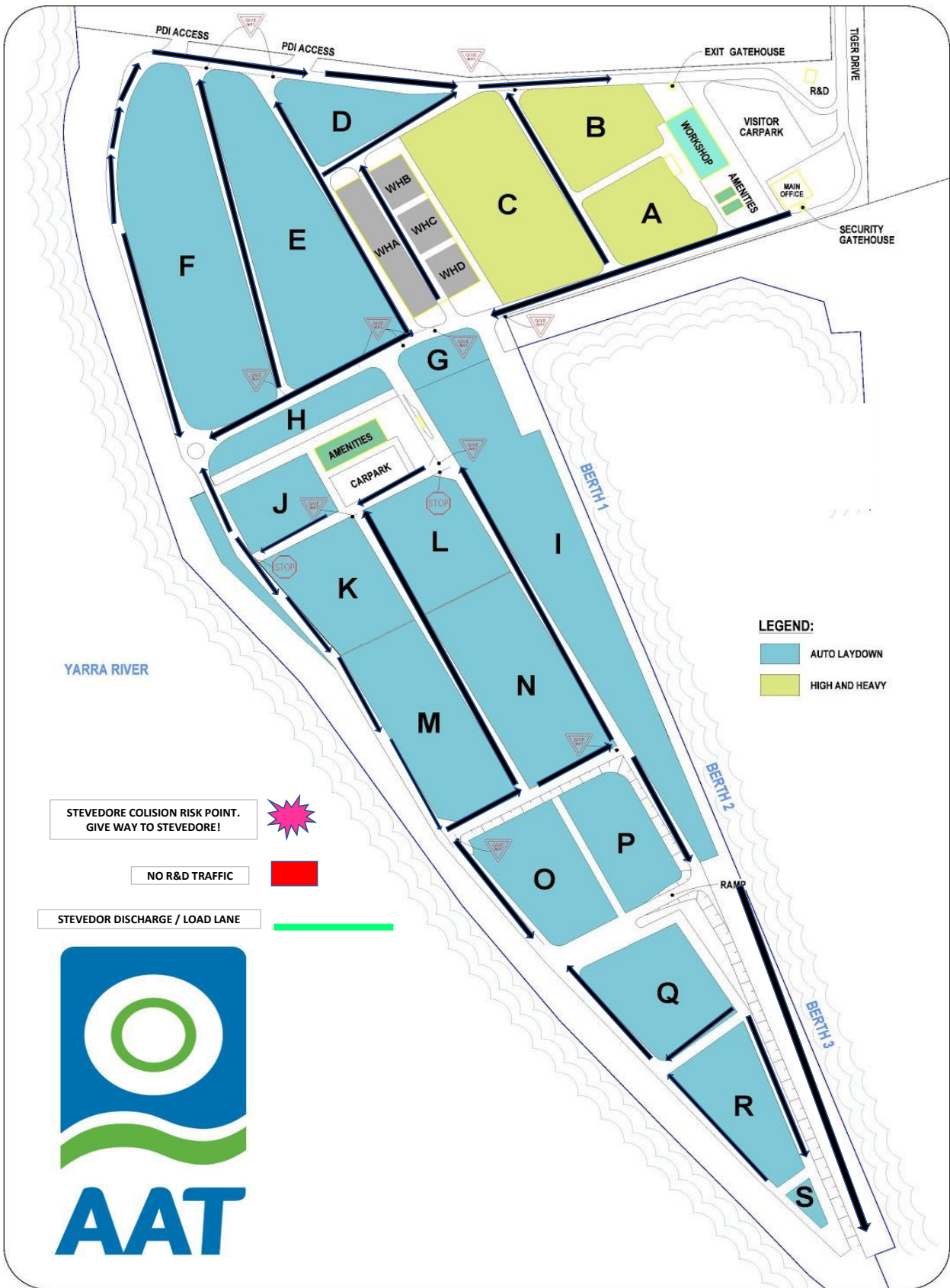


NO R&D TRAFFIC



STEVEDOR DISCHARGE / LOAD LANE





## **PART C: TERMINAL USERS IN WHICH QUBE OR A QUBE RELATED ENTITY HAS AN INTEREST**

Qube or a Qube Related Entity has a direct or indirect interest greater than or equal to 20% in the following Terminal Users who provided Stevedoring Services or PDI Operator Services at the following Terminals during the period covered by this Compliance Report:

### **Port Kembla Terminal**

Qube Ports Pty Ltd ACN 123 021 492

Prixcar Services Pty Ltd ACN 007 063 505

### **Brisbane Terminal**

Qube Ports Pty Ltd ACN 123 021 492

Prixcar Services Pty Ltd ACN 007 063 505

25<sup>th</sup> February 2026

To Whom It May Concern,

**Re: Clause 8.1(e)(iv) – Details of any Identified Non-Compliance with this Undertaking**

On behalf of AAT, we confirm that there were no identified instances of non-compliance with the Undertaking during the relevant reporting period.

Should you require any further information, please do not hesitate to contact me.

Vincent Macheda

**General Manager, Company Secretary & Compliance Officer**

P: +61 3 8698 6915 | F: +61 3 8698 6985 | M: 0434 074 605

E: [Vincent.Macheda@aaterminals.com.au](mailto:Vincent.Macheda@aaterminals.com.au) | W: <http://www.aaterminals.com.au>